

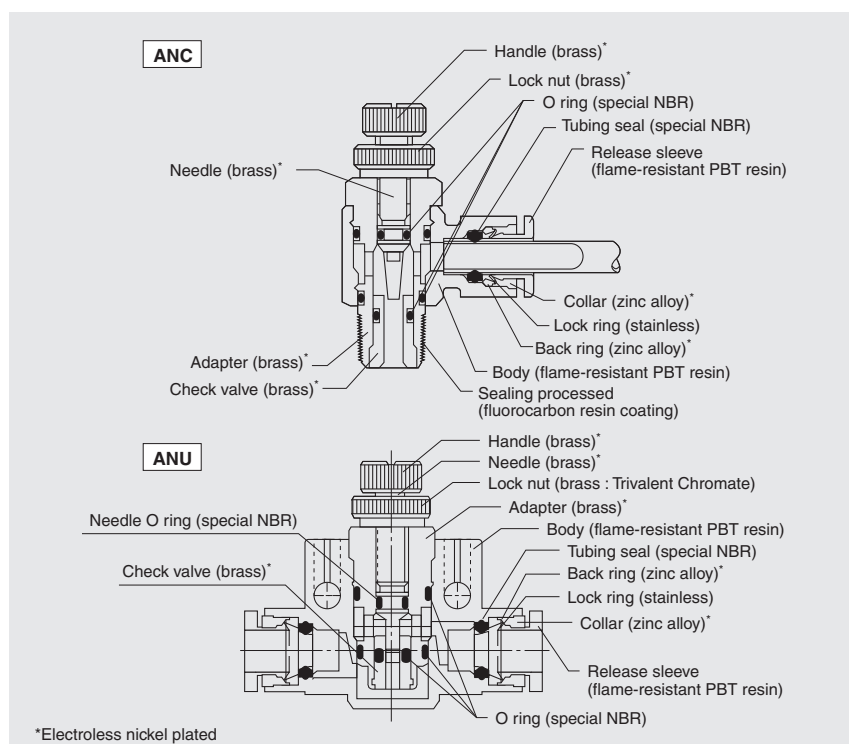
Throttle Valve

PushOne™ Type

Features

- Fine control of flow rate
- Flame-resistant resin (compliant with V-0 of UL94 standard)
Made of flame-resistant resin PBT. High self-extinguishing performance is compliant with V-0 of UL94 standard. Usable under an environment with spatters.
- Inline type (ANU) allows central control on a pipe line
Various kinds of piping are possible by fixing with connector pins and brackets.
- PushOne connection of tubing
Jigs and tools are not required for connecting the tubes.
- Electroless nickel plated
Prevents degradation of the surface and dissolution of copper ions into fluid.
- Sealing-processed R thread
Sealing tape is not required.

Cross-sectional structure diagram



Product number example

ANC 6-R1/8

Shape
Applicable tubing outer diameter
Thread size

Distinction from speed controller



No arrow mark (left): Throttle valve
Arrow mark present (right): Speed controller

Applicable tubing



(*1) Combinatory use of PL, PN, TA or TP tubing and throttle valve mixes general and clean type performances. When using them together in a clean environment, be aware of how this could lower the cleanliness level.



Operating fluid, working temperature range

Operating fluid	Working temperature range
Air	-20°C~+80°C
Water	0°C~+40°C

Pressure condition

Maximum working pressure: 1.0MPa

Handling instructions

- ⚠ **Caution:** When the working conditions of tubes and fittings differ, use them under the lower specified conditions.
- ⚠ **Caution:** Tighten the lock nut and handle by hand, not by a spanner.
- ⚠ **Caution:** The needle part stops when fully opened. Forced rotation could cause damage.
- ⚠ **Caution:** When water is used as the operating fluid, do not allow it to freeze.
- ⚠ **Caution:** When water is used as the operating fluid, confirm that there is no water leakage damage to equipment and instruments due to construction failure.
- ⚠ **Caution:** Do not bend the pipe sharply near the tubing insertion port (sleeve end) of the fitting. Keep the tubing straight for twice as long as the tubing diameter from the insertion port.

See page 134 for the common handling instructions for control, switch and detachable series products.

Inline type connection



Inline type controllers can be connected with a connector pin.
(The photograph shows speed controllers.)

Reference

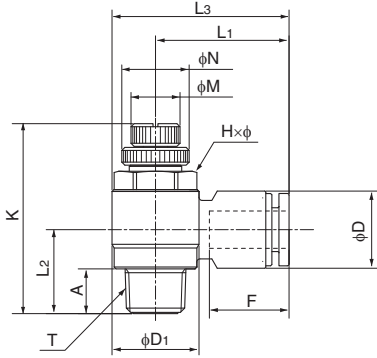
UL-94 standard flame test.....P.195

Elbow type



●Millimeter size type

Product number	Applicable tubing outer diameter (mm)	Thread size (R)	L ₁ (mm)	L ₂ (mm)	L ₃ (mm)	K		A (mm)	F Tubing insertion length (mm)	H×φ Width across flat (mm)	N (mm)	M (mm)	D (mm)	D ₁ (mm)	Weight (g)
						Full open (mm)	Full closed (mm)								
ANC4-R1/8	4	R1/8	20.1	13.7	27.2	36.0	31.0	7.3	13.5	12.0×13.5	11.0	8.0	9.8	14.2	19.0
ANC6-R1/8	6	R1/8	21.8	13.7	28.9	36.0	31.0	7.3	15	12.0×13.5	11.0	8.0	12.6	14.2	20.0

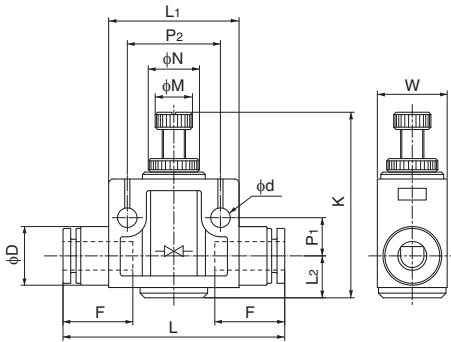


Inline type

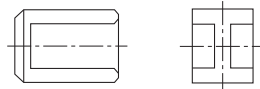


●Millimeter size type

Product number	Applicable tubing outer diameter (mm)	L (mm)	L ₁ (mm)	L ₂ (mm)	P ₁ (mm)	P ₂ (mm)	K		F Tubing insertion length (mm)	N (mm)	M (mm)	D (mm)	d (mm)	W (mm)	Weight (g)	Effective sectional area (mm ²)
							Full open (mm)	Full closed (mm)								
ANU4	4	41.8	20.0	6.4	6.0	14.0	29.5	26.9	13	8.0	5.0	9.8	3.2	10.6	11.5	—
ANU6	6	47.6	28.0	9.0	8.2	20.0	43.5	39.8	15	11.0	8.0	12.6	4.2	15.0	31.0	—
ANU8	8	55.8	30.0	10.3	9.2	22.0	47.7	42.1	16	13.0	10.0	14.6	4.2	17.6	48.0	—



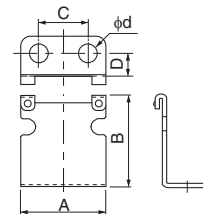
Connector pin



●Connector pin

Product number	Applicable fitting product number
HPN4	ANU4
HPN6	ANU6
	ANU8

Bracket



●Bracket

Product number	Applicable fitting product number	A (mm)	B (mm)	C (mm)	D (mm)	d (mm)
BRK4	ANU4	18.0	18.5	10.0	6.5	5.0
BRK6	ANU6	24.0	26.0	14.0	6.5	5.0
BRK8	ANU8	26.0	30.0	14.0	6.5	5.0