

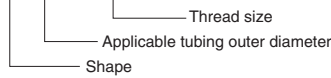
# Barb Type

## Features

- Various shapes can be made by combining the connector and each part.
- Seal-processed PT thread requires no sealing tape.

## Product number example

**BN 4 - PT1/8**



## Applicable tubing

Polyurethane tubing



U5



## Operating fluid, working temperature range

Operating fluid	Working temperature range
Air	-40°C~+80°C

## Pressure condition

**Maximum working pressure:** 0.4MPa  
**Negative pressure performance:** -99.975kPa

See page 34 for the common handling instructions for fittings.

## How to attach

Insert a tubing into the tubing connection part (bamboo-shoot shaped) until the tubing reaches the end. The thread part is attached in the same way as the PushOne series.

## Sample combinations of barb fittings

Various shapes of barb fittings can be made by combining the connector and each part.

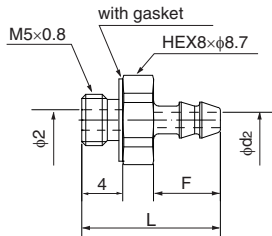
<p><b>Elbow shape</b></p>	<p>Sample combination</p> <p>Tubing size : 4x2.5 Thread size : M5</p>	<p>(Body) Elbow block BL-M5</p>	+	<p>(Thread side) Adapter nipple BAN-M5</p>	+	<p>(Tubing side) Connector BN4-M5</p>				
<p><b>Tee shape</b></p>	<p>Sample combination</p> <p>Tubing size : 6x4 Thread size : R1/8</p>	<p>(Body) Tee block BT-M5</p>	+	<p>(Thread side) Adapter nipple BAN-M5</p>	+	<p>(Tubing side) Adapter bush BAB-M5-PT1/8</p>	+	<p>(Tubing side) Connector BN6-M5</p>	+	<p>(Tubing side) Connector BN6-M5</p>
<p><b>Service tee shape</b></p>	<p>Sample combination</p> <p>Tubing size : 3.5x2 Thread size : M5</p>	<p>(Body) Tee block BT-M5</p>	+	<p>(Thread side) Adapter nipple BAN-M5</p>	+	<p>(Tubing side) Connector BN3.5-M5</p>	+	<p>(Tubing side) Connector BN3.5-M5</p>		
<p><b>Union elbow shape</b></p>	<p>Sample combination</p> <p>Tubing size : 4x2.5</p>	<p>(Body) Elbow block BL-M5</p>	+	<p>(Tubing side) Connector BN4-M5</p>	+	<p>(Tubing side) Connector BN4-M5</p>				
<p><b>Union tee shape</b></p>	<p>Sample combination</p> <p>Tubing size : 4x2.5</p>	<p>(Body) Tee block BT-M5</p>	+	<p>Connector BN4-M5</p>	+	<p>(Tubing side) Connector BN4-M5</p>	+	<p>Connector BN4-M5</p>		
<p><b>Universal elbow shape</b></p>	<p>Sample combination</p> <p>Tubing size : 6x4 Thread size : PT1/8</p>	<p>(Body) Universal elbow block BUVL-M5</p>	+	<p>(Thread side) Adapter bush BAB-M5-PT1/8</p>	+	<p>(Tubing side) Connector BN6-M5</p>				
<p><b>Universal tee shape</b></p>	<p>Sample combination</p> <p>Tubing size : 3.5x2 Thread size : M5</p>	<p>(Body, Thread side) Universal tee block BUVT-M5</p>	+	<p>Connector BN3.5-M5</p>	+	<p>(Tubing side) Connector BN3.5-M5</p>				

Connector



●Millimeter size type

Product number	Applicable tubing outer/inner diameters (mm)	Thread size (M,R)	L (mm)	F Tubing insertion length (mm)	d <sub>2</sub> (mm)	Min. inner diameter (mm)	Weight (g)
BN3.5-M5	3.5×2	M5×0.8	13.5	6.5	1.0	1.0	2.0
BN4-M5	4×2.5	M5×0.8	13.5	6.5	1.5	1.5	2.0
BN6-M5	6×4	M5×0.8	15.0	8.0	3.0	2.0	2.5

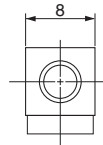
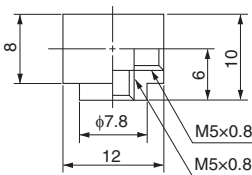


Barb type parts

Elbow block

Product number : BL-M5

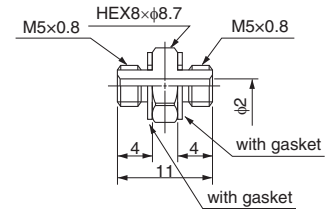
Weight 5.5g



Adapter nipple

Product number : BAN-M5

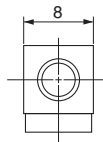
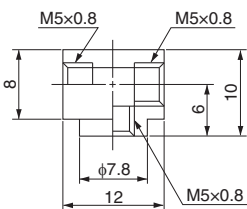
Weight 2.0g



Tee block

Product number : BT-M5

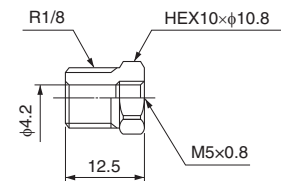
Weight 5.0g



Adapter bush

Product number : BAB-M5-PT1/8

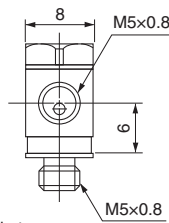
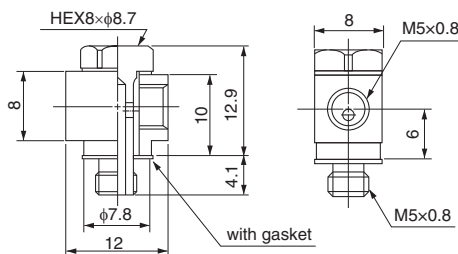
Weight 6.0g



Universal elbow block

Product number : BUVL-M5

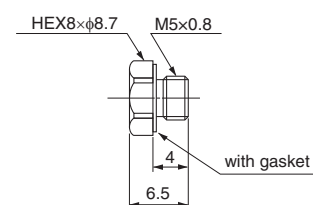
Weight 7.5g



Plug

Product number : BBP-M5

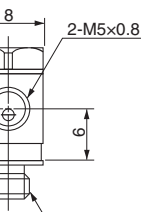
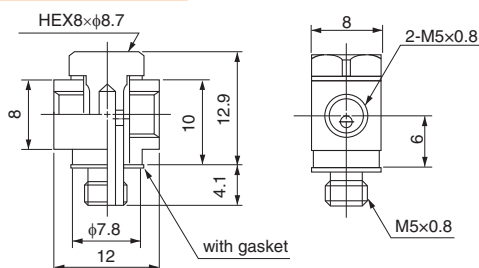
Weight 1.5g



Universal tee block

Product number : BUVT-M5

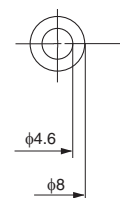
Weight 7.0g



Gasket

Product number : MRG-5-01

Thickness 0.4mm



Tubing

Clean tubing

Processed tubing

PushOne fitting

QuickSeal fitting

Clean fitting/ChemiFit

Bamboo-shoot fitting

Control switch/Detachable series

Jig/Tool/Accessory

Technical information

Reference