

PushOne™ E Series

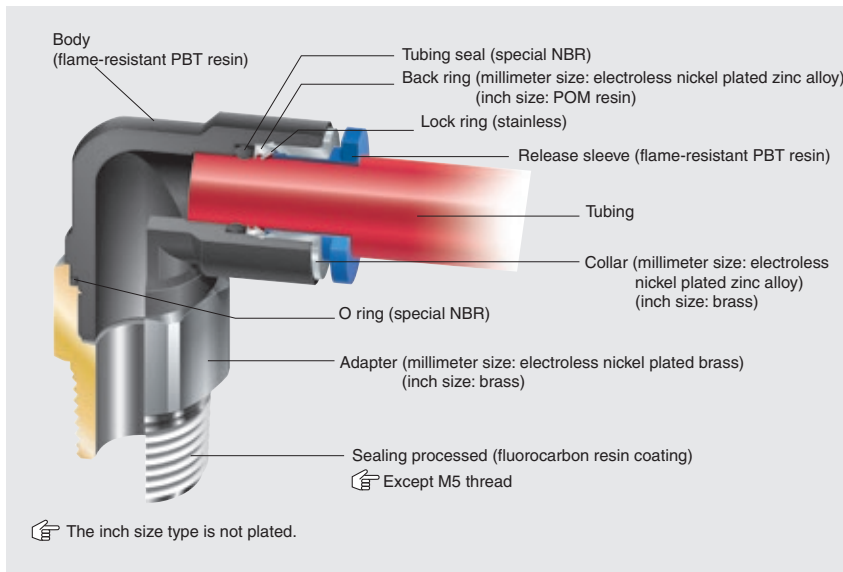
PushOne™ fittings for general air pressure (flame-resistant)

Features

- **PushOne connection of tubing**
The tubes can be connected without using a jig or tools.
- **Electroless nickel plated**
Prevents degradation of surface and dissolution of copper ions in fluid.
- **Flame-resistant resin (compliant with V-0 of UL94 standard)**
Made of flame-resistant resin PBT. High self-extinguishing performance is compliant with V-0 of UL94 standard. Usable under an environment with spatters.
- **Sealing-processed R thread**
Sealing tape is not required.



Cross-sectional structure diagram



Operating fluid, working temperature range

Operating fluid	Working temperature range
Air	-20°C~+80°C
Water	0°C~+40°C

See "Combination List of Tubing and Fitting" on page 8.

Pressure condition

Maximum working pressure: 1.0MPa
Negative pressure performance: -99.975kPa

Handling instructions

- ⚠ Caution: When the working conditions of tubes and fittings differ, use them under the lower specified conditions.
- ⚠ Caution: When water is used as the operating fluid, confirm that there is no water leakage damage to equipment and instruments due to construction failure.
- ⚠ Caution: When water is used as the operating fluid, do not allow it to freeze.
- ⚠ Caution: Do not bend the pipe sharply near the tubing insertion port of the fitting. Keep the tubing straight for twice as long as the tubing diameter from the insertion port.

See page 34 for the common handling instructions for fittings.

Product number example

EL 6 - PT1/8

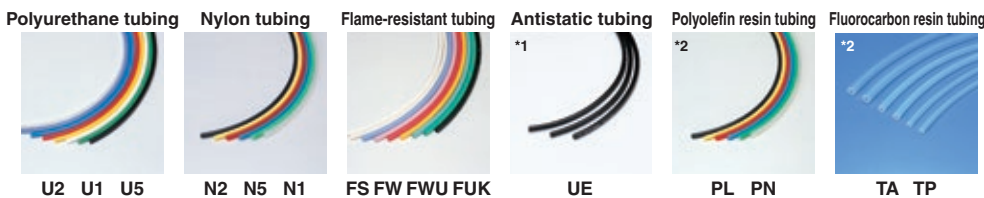


Distinction of millimeter/inch sizes



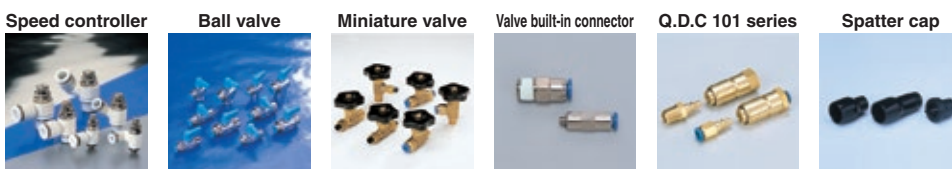
The inch size type has a white release sleeve.

Applicable tubing



(*1) When the PushOne E series is used with a UE tubing, choose a metal body type including a connector and a hexagonal socket to maintain conductivity between the tubing and the fittings.
(*2) Combinatory use of PL, PN, TA or TP tubing and PushOne E series mixes general and clean type performances. When using them together in a clean environment, be aware of how this could lower the cleanliness level.

Related products and product introduction



Reference

Instruction manualP.170
UL-94 standard flame testP.195
Effective sectional area ...P.168
Negative-pressure performance listP.169

PushOne™ E Series

Shape list



Tubing

Clean tubing

Processed tubing

PushOne fitting

QuickSeal fitting

Clean fitting/
Chemifit

Bamboo-shoot fitting

Control switch/
Detachable series

Jig/Tool/
Accessory

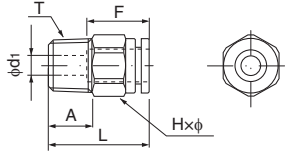
Technical information

Reference

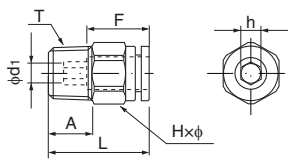
Connector



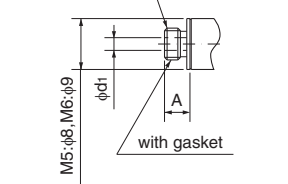
Millimeter size type



Inch size type



M thread



●Millimeter size type

Product number	Applicable tubing outer diameter (mm)	T Thread size (M,R)	L (mm)	A (mm)	F Tubing insertion length (mm)	H×φ Width across flat (mm)	d ₁ (mm)	Effective sectional area (mm ²)	Weight (g)
EC4-M5	4	M5×0.8	22.4	4.0	13	10.0×11.0	2.0	3.0	6.0
EC4-PT1/8	4	R1/8	19.4	8.0	13	10.0×11.0	2.5	4.0	7.0
EC4-PT1/4	4	R1/4	22.4	11.0	13	14.0×15.4	2.5	4.0	17.0
EC6-M5	6	M5×0.8	24.2	4.0	15	12.0×13.0	2.0	3.5	9.0
EC6-M6	6	M6×1.0	25.2	5.0	15	12.0×13.0	3.0	4.5	10.0
EC6-PT1/8	6	R1/8	21.2	8.0	15	12.0×13.0	4.0	10.5	9.0
EC6-PT1/4	6	R1/4	24.2	11.0	15	14.0×15.4	4.0	10.5	18.0
EC6-PT3/8	6	R3/8	25.2	12.0	15	17.0×18.5	4.0	10.5	32.0
EC8-PT1/8	8	R1/8	26.2	8.0	16	14.0×15.4	5.0	20.0	14.0
EC8-PT1/4	8	R1/4	25.2	11.0	16	14.0×15.4	6.0	25.0	16.0
EC8-PT3/8	8	R3/8	26.2	12.0	16	17.0×18.5	6.0	26.0	29.0
EC10-PT1/8	10	R1/8	30.1	8.0	19	17.0×18.5	5.0	25.0	24.0
EC10-PT1/4	10	R1/4	28.1	11.0	19	17.0×18.5	8.0	40.0	21.0
EC10-PT3/8	10	R3/8	29.1	12.0	19	17.0×18.5	8.0	40.0	29.0
EC10-PT1/2	10	R1/2	32.1	15.0	19	22.0×24.5	8.0	40.0	61.0
EC12-PT1/4	12	R1/4	34.0	11.0	20	19.0×21.0	8.0	45.0	32.0
EC12-PT3/8	12	R3/8	30.0	12.0	20	19.0×21.0	10.0	50.0	31.0
EC12-PT1/2	12	R1/2	33.0	15.0	20	22.0×24.5	10.0	50.0	58.0
EC16-PT3/8	16	R3/8	41.6	12.0	27	24.0×26.5	10.0	77.0	68.0
EC16-PT1/2	16	R1/2	43.6	15.0	27	24.0×26.5	12.0	110.5	83.0

*Made to order

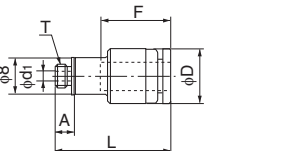
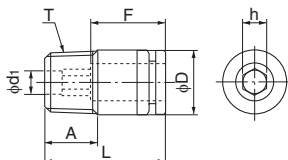
●Inch size type

Product number	Applicable tubing outer diameter (inch)	T Thread size (M,R)	L (mm)	A (mm)	F Tubing insertion length (mm)	H×φ Width across flat (mm)	h Width across flat (mm)	d ₁ (mm)	Effective sectional area (mm ²)	Weight (g)
EC1/4-M5	1/4	M5×0.8	24.4	4.0	15	12.0×13.0	4.0	2.0	3.5	9.0
EC1/4-PT1/8	1/4	R1/8	21.4	8.0	15	12.0×13.0	4.0	4.0	12.0	9.0
EC1/4-PT1/4	1/4	R1/4	24.4	11.0	15	14.0×15.4	4.0	4.0	12.0	18.0
EC1/4-PT3/8	1/4	R3/8	25.4	12.0	15	17.0×18.5	4.0	4.0	12.0	32.0
EC5/16-PT1/8	5/16	R1/8	25.9	8.0	16	14.0×15.4	5.0	5.0	20.0	14.0
EC5/16-PT1/4	5/16	R1/4	24.9	11.0	16	14.0×15.4	6.0	6.0	25.0	16.0
EC5/16-PT3/8	5/16	R3/8	25.9	12.0	16	17.0×18.5	6.0	6.0	26.0	29.0
EC3/8-PT1/8	3/8	R1/8	29.7	8.0	19	17.0×18.5	—	5.0	20.0	24.0
EC3/8-PT1/4	3/8	R1/4	27.7	11.0	19	17.0×18.5	—	8.0	35.0	21.0
EC3/8-PT3/8	3/8	R3/8	28.7	12.0	19	17.0×18.5	—	8.0	35.0	29.0
EC3/8-PT1/2	3/8	R1/2	31.7	15.0	19	22.0×24.5	—	8.0	35.0	61.0
EC1/2-PT1/4	1/2	R1/4	34.0	11.0	21	19.0×21.0	—	8.0	48.0	32.0
EC1/2-PT3/8	1/2	R3/8	30.0	12.0	21	19.0×21.0	—	10.0	66.5	31.0
EC1/2-PT1/2	1/2	R1/2	33.0	15.0	21	22.0×24.5	—	10.0	66.5	58.0

☞ The inch size type is not plated.

Hexagon socket connector

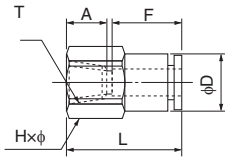
●Millimeter size type



Product number	Applicable tubing outer diameter (mm)	T Thread size (M,R)	L (mm)	A (mm)	F Tubing insertion length (mm)	h Width across flat (mm)	D (mm)	d ₁ (mm)	Effective sectional area (mm ²)	Weight (g)
EC4-M5A	4	M5×0.8	19.4	4.0	13	2.0	9.8	2.0	—	5.0
EC4-PT1/8A	4	R1/8	19.4	8.0	13	2.5	9.8	2.5	—	7.0
EC6-M5A	6	M5×0.8	24.2	4.0	15	4.0	11.8	2.0	—	18.0
EC6-PT1/8A	6	R1/8	21.2	8.0	15	4.0	11.8	4.0	—	8.0
EC6-PT1/4A	6	R1/4	24.2	11.0	15	4.0	13.8	4.0	—	17.0
EC8-PT1/8A	8	R1/8	26.2	8.0	16	5.0	13.8	5.0	—	12.0
EC8-PT1/4A	8	R1/4	25.2	11.0	16	5.0	13.8	5.0	—	15.0
EC10-PT1/4A	10	R1/4	28.1	11.0	19	6.0	16.8	6.0	—	19.0
EC10-PT3/8A	10	R3/8	29.1	12.0	19	6.0	16.8	6.0	—	28.0

Tubing
Clean tubing
Processed tubing
PushOne fitting
QuickSeal fitting
Clean fitting/ Chemifit
Bamboo-shoot fitting
Control switch/ Detachable series
Jig/Tool/ Accessory
Technical information
Reference

Internal connector



●Millimeter size type

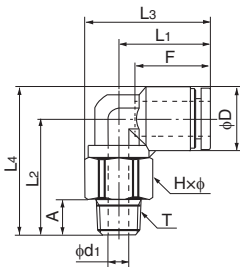
Product number	Applicable tubing outer diameter (mm)	T Thread size (RC)	L (mm)	A (mm)	F Tubing insertion length (mm)	H×φ Width across flat (mm)	D (mm)	Min. inner diameter (mm)	Effective sectional area (mm ²)	Weight (g)
EFC4-PT1/8	4	RC1/8	23.9	8.7	13	14.0×15.4	10.0	3.0	4.0	16.0
EFC6-PT1/8	6	RC1/8	24.8	8.7	15	14.0×15.4	12.0	5.0	10.5	17.0
EFC6-PT1/4	6	RC1/4	29.3	13.0	15	17.0×18.5	12.0	5.0	10.5	26.0
EFC8-PT1/4	8	RC1/4	30.9	13.0	16	17.0×18.5	13.9	7.0	25.0	28.0
EFC8-PT3/8	8	RC3/8	31.4	13.5	16	22.0×24.5	13.9	7.0	26.0	45.0
EFC10-PT1/4	10	RC1/4	33.9	13.0	19	17.0×18.5	16.9	9.0	40.0	34.0
EFC10-PT3/8	10	RC3/8	34.4	13.5	19	22.0×24.5	16.9	9.0	40.0	50.0
EFC10-PT1/2	10	RC1/2	38.4	17.5	19	24.0×26.5	16.9	9.0	40.0	56.0
EFC12-PT1/4	12	RC1/4	34.8	13.0	20	19.0×21.0	19.0	10.0	45.0	43.0
EFC12-PT3/8	12	RC3/8	35.3	13.5	20	22.0×24.5	19.0	11.0	50.0	50.0
EFC12-PT1/2	12	RC1/2	39.3	17.5	20	24.0×26.5	19.0	11.0	50.0	58.0

●Inch size type

Product number	Applicable tubing outer diameter (inch)	T Thread size (RC)	L (mm)	A (mm)	F Tubing insertion length (mm)	H×φ Width across flat (mm)	D (mm)	Min. inner diameter (mm)	Effective sectional area (mm ²)	Weight (g)
EFC1/4-PT1/8	1/4	RC1/8	25.0	8.7	15	14.0×15.4	12.0	5.0	12.0	17.0
EFC1/4-PT1/4	1/4	RC1/4	29.5	13.0	15	17.0×18.5	12.0	5.0	12.0	26.0
EFC5/16-PT1/4	5/16	RC1/4	30.6	13.0	16	17.0×18.5	13.9	7.0	25.0	28.0
EFC5/16-PT3/8	5/16	RC3/8	31.1	13.5	16	22.0×24.5	13.9	7.0	26.0	45.0
EFC3/8-PT1/4	3/8	RC1/4	33.5	13.0	19	17.0×18.5	16.9	9.0	35.0	34.0
EFC3/8-PT3/8	3/8	RC3/8	34.0	13.5	19	22.0×24.5	16.9	9.0	35.0	50.0
EFC3/8-PT1/2	3/8	RC1/2	38.0	17.5	19	24.0×26.5	16.9	9.0	35.0	56.0
EFC1/2-PT1/4	1/2	RC1/4	35.3	13.0	21	22.0×24.5	20.0	10.0	48.0	43.0
EFC1/2-PT3/8	1/2	RC3/8	35.3	13.5	21	22.0×24.5	20.0	11.0	66.5	50.0
EFC1/2-PT1/2	1/2	RC1/2	39.3	17.5	21	24.0×26.5	20.0	11.0	66.5	58.0

The inch size type is not plated.

90 degree elbow



●Millimeter size type

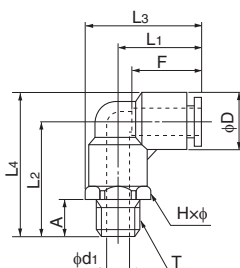
Product number	Applicable tubing outer diameter (mm)	T Thread size (M,R)	L1 (mm)	L2 (mm)	L3 (mm)	L4 (mm)	A (mm)	F Tubing insertion length (mm)	H×φ Width across flat (mm)	D (mm)	d1 (mm)	Min. inner diameter (mm)	Effective sectional area (mm ²)	Weight (g)
EL4-M5-Z2	4	M5×0.8	17.2	18.3	22.7	23.2	4.0	13	10.0×11.0	9.8	2.0	2.0	3.0	6.0
EL4-PT1/8-Z2	4	R1/8	17.2	22.7	22.7	27.6	8.0	13	10.0×11.0	9.8	5.0	3.0	4.0	10.0
EL4-PT1/4-Z2	4	R1/4	17.2	24.4	24.9	29.3	12.0	13	14.0×15.4	9.8	5.0	3.0	4.0	19.0
EL6-M5-Z2	6	M5×0.8	18.5	22.2	25.0	28.5	4.0	15	12.0×13.0	12.6	2.0	2.0	3.5	10.0
EL6-M6	6	M6×1.0	18.5	22.7	25.0	29.0	5.0	15	12.0×13.0	12.6	3.0	3.0	4.5	11.0
EL6-PT1/8-Z2	6	R1/8	18.5	25.2	25.0	31.5	8.0	15	12.0×13.0	12.6	5.0	5.0	12.0	12.0
EL6-PT1/4-Z2	6	R1/4	18.5	25.8	26.2	32.1	12.0	15	14.0×15.4	12.6	7.0	5.0	12.0	17.0
EL6-PT3/8-Z2	6	R3/8	18.5	26.8	27.8	33.1	12.0	15	17.0×18.5	12.6	11.0	5.0	12.0	27.0
EL8-PT1/8-Z2	8	R1/8	20.7	26.2	28.4	33.5	8.0	16	14.0×15.4	14.6	5.0	5.0	18.5	16.0
EL8-PT1/4-Z2	8	R1/4	20.7	30.2	28.4	37.5	12.0	16	14.0×15.4	14.6	8.0	7.0	23.0	19.0
EL8-PT3/8-Z2	8	R3/8	20.7	27.8	30.0	35.1	12.0	16	17.0×18.5	14.6	9.0	7.0	23.0	28.0
EL10-PT1/8-Z2	10	R1/8	24.7	29.2	33.9	38.0	8.0	19	17.0×18.5	17.5	5.0	5.0	22.0	23.0
EL10-PT1/4-Z2	10	R1/4	24.7	32.4	33.9	41.1	12.0	19	17.0×18.5	17.5	8.0	8.0	38.0	25.0
EL10-PT3/8-Z2	10	R3/8	24.7	34.2	33.9	43.0	12.0	19	17.0×18.5	17.5	11.0	9.0	37.0	30.0
EL10-PT1/2-Z2	10	R1/2	24.7	34.3	36.9	43.0	16.0	19	22.0×24.5	17.5	12.0	9.0	37.0	53.0
EL12-PT1/4-Z2	12	R1/4	26.3	35.0	36.8	45.0	12.0	20	19.0×21.0	20.0	8.0	8.0	42.0	31.0
EL12-PT3/8-Z2	12	R3/8	26.3	33.5	36.8	43.5	12.0	20	19.0×21.0	20.0	11.0	11.0	46.0	32.0
EL12-PT1/2-Z2	12	R1/2	26.3	36.5	38.6	46.5	16.0	20	22.0×24.5	20.0	12.0	11.0	46.0	53.0
EL16-PT3/8	16	R3/8	34.9	45.0	48.4	59.0	12.0	27	24.0×27.0	28.0	11.0	11.0	70.0	70.0
EL16-PT1/2	16	R1/2	34.9	48.0	48.4	62.0	15.0	27	24.0×27.0	28.0	12.0	12.0	93.0	84.0

*Made to order

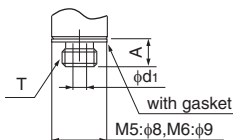
●Inch size type

Product number	Applicable tubing outer diameter (inch)	T Thread size (M,R)	L1 (mm)	L2 (mm)	L3 (mm)	L4 (mm)	A (mm)	F Tubing insertion length (mm)	H×φ Width across flat (mm)	D (mm)	d1 (mm)	Min. inner diameter (mm)	Effective sectional area (mm ²)	Weight (g)
EL1/4-M5	1/4	M5×0.8	18.1	22.7	24.6	29.2	4.0	15	12.0×13.0	13.0	2.0	2.0	3.0	10.0
EL1/4-PT1/8	1/4	R1/8	18.1	25.2	24.6	31.7	8.0	15	12.0×13.0	13.0	5.0	5.0	13.0	18.0
EL1/4-PT1/4	1/4	R1/4	18.1	29.2	25.8	35.7	11.0	15	14.0×15.4	13.0	7.0	5.0	13.0	18.0
EL1/4-PT3/8	1/4	R3/8	18.1	30.2	27.4	36.7	12.0	15	17.0×18.5	13.0	9.0	5.0	13.0	26.0
EL5/16-PT1/8	5/16	R1/8	20.6	26.2	28.3	33.7	8.0	16	14.0×15.4	15.0	5.0	5.0	18.5	15.0
EL5/16-PT1/4	5/16	R1/4	20.6	30.2	28.3	37.7	11.0	16	14.0×15.4	15.0	7.0	7.0	23.0	20.0
EL5/16-PT3/8	5/16	R3/8	20.6	31.2	29.9	38.7	12.0	16	17.0×18.5	15.0	9.0	7.0	23.0	28.0
EL3/8-PT1/8	3/8	R1/8	24.4	29.2	33.7	38.2	8.0	19	17.0×18.5	18.0	5.0	5.0	19.0	22.0
EL3/8-PT1/4	3/8	R1/4	24.4	33.2	33.7	42.2	11.0	19	17.0×18.5	18.0	7.0	7.0	30.0	27.0
EL3/8-PT3/8	3/8	R3/8	24.4	34.2	33.7	43.2	12.0	19	17.0×18.5	18.0	9.0	9.0	32.0	33.0
EL3/8-PT1/2	3/8	R1/2	24.4	38.2	36.7	47.2	15.0	19	22.0×24.5	18.0	12.0	9.0	32.0	52.0
EL1/2-PT1/4	1/2	R1/4	26.5	35.7	37.0	46.5	11.0	21	19.0×21.0	21.5	7.0	7.0	37.0	34.0
EL1/2-PT3/8	1/2	R3/8	26.5	36.7	37.0	47.5	12.0	21	19.0×21.0	21.5	9.0	9.0	53.0	39.0
EL1/2-PT1/2	1/2	R1/2	26.5	40.7	38.7	51.5	15.0	21	22.0×24.5	21.5	12.0	10.0	55.5	56.0

The inch size type is not plated.



M thread



Tubing

Clean tubing

Processed tubing

PushOne fitting

QuickSeal fitting

Clean fitting/Chemifit

Bamboo-shoot fitting

Control switch/Detachable series

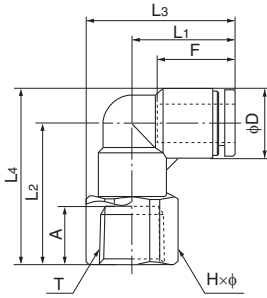
Jig/Tool/Accessory

Technical information

Reference

90 degree internal elbow

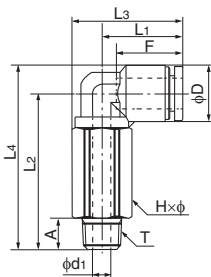
●Millimeter size type



Product number	Applicable tubing outer diameter (mm)	T Thread size (RC)	L1 (mm)	L2 (mm)	L3 (mm)	L4 (mm)	A (mm)	F Tubing insertion length (mm)	H×φ Width across flat (mm)	D (mm)	Min. inner diameter (mm)	Effective sectional area (mm ²)	Weight (g)
EFL4-PT1/8	4	RC1/8	17.2	21.7	24.9	26.6	8.0	13	14.0×15.4	9.8	3.0	—	13.0
EFL6-PT1/8	6	RC1/8	18.5	24.2	26.2	30.5	8.0	15	14.0×15.4	12.6	5.0	—	15.0
EFL6-PT1/4	6	RC1/4	18.5	28.2	27.8	34.5	12.0	15	17.0×18.5	12.6	5.0	—	23.0
EFL8-PT3/8	6	RC3/8	18.5	28.7	30.8	35.0	12.5	15	22.0×24.5	12.6	5.0	—	37.0
EFL8-PT1/8	8	RC1/8	20.7	25.2	28.4	32.5	8.0	16	14.0×15.4	14.6	7.0	—	17.0
EFL8-PT1/4	8	RC1/4	20.7	29.2	30.0	36.5	12.0	16	17.0×18.5	14.6	7.0	—	25.0
EFL8-PT3/8	8	RC3/8	20.7	29.7	33.0	37.0	12.5	16	22.0×24.5	14.6	7.0	—	38.0
EFL10-PT1/4	10	RC1/4	24.7	32.2	33.9	41.0	12.0	19	17.0×18.5	17.5	9.0	—	29.0
EFL10-PT3/8	10	RC3/8	24.7	33.7	36.9	42.5	12.5	19	22.0×24.5	17.5	9.0	—	45.0
EFL12-PT3/8	12	RC3/8	26.3	36.2	38.6	46.2	12.5	20	22.0×24.5	20.0	10.0	—	49.0
EFL12-PT1/2	12	RC1/2	26.3	39.2	39.6	49.2	15.5	20	24.0×26.5	20.0	10.0	—	54.0

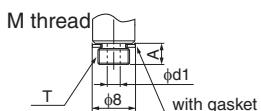
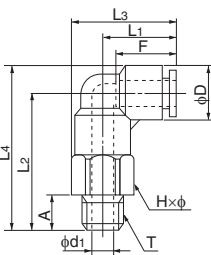
90 degree long elbow

●Millimeter size type



Product number	Applicable tubing outer diameter (mm)	T Thread size (M,R)	L1 (mm)	L2 (mm)	L3 (mm)	L4 (mm)	A (mm)	F Tubing insertion length (mm)	H×φ Width across flat (mm)	D (mm)	d1 (mm)	Min. inner diameter (mm)	Effective sectional area (mm ²)	Weight (g)
ELL4-M5-Z2	4	M5×0.8	17.2	29.9	22.7	34.8	4.0	13	10.0×11.0	9.8	2.0	2.0	3.0	14.0
ELL4-PT1/8-Z2	4	R1/8	17.2	32.4	22.7	37.3	8.0	13	10.0×11.0	9.8	5.0	3.0	4.0	15.0
ELL4-PT1/4-Z2	4	R1/4	17.2	36.4	24.9	41.3	12.0	13	14.0×15.4	9.8	5.0	3.0	4.0	34.0
ELL6-M5-Z2	6	M5×0.8	18.5	34.7	25.0	41.0	4.0	15	12.0×13.0	12.6	2.0	2.0	3.5	23.0
ELL6-PT1/8-Z2	6	R1/8	18.5	37.2	25.0	43.5	8.0	15	12.0×13.0	12.6	5.0	5.0	12.0	23.0
ELL6-PT1/4-Z2	6	R1/4	18.5	41.2	26.2	47.5	12.0	15	14.0×15.4	12.6	7.0	5.0	12.0	34.0
ELL6-PT3/8-Z2	6	R3/8	18.5	42.2	27.8	48.5	12.0	15	17.0×18.5	12.6	11.0	5.0	12.0	54.0
ELL8-PT1/8-Z2	8	R1/8	20.7	40.2	28.4	47.5	8.0	16	14.0×15.4	14.6	5.0	5.0	18.5	33.0
ELL8-PT1/4-Z2	8	R1/4	20.7	44.2	28.4	51.5	12.0	16	14.0×15.4	14.6	8.0	7.0	23.0	33.0
ELL8-PT3/8-Z2	8	R3/8	20.7	45.2	30.0	52.5	12.0	16	17.0×18.5	14.6	9.0	7.0	23.0	55.0
ELL10-PT1/8-Z2	10	R1/8	24.7	46.2	33.9	55.0	8.0	19	17.0×18.5	17.5	5.0	5.0	22.0	55.0
ELL10-PT1/4-Z2	10	R1/4	24.7	50.2	33.9	59.0	12.0	19	17.0×18.5	17.5	8.0	8.0	38.0	55.0
ELL10-PT3/8-Z2	10	R3/8	24.7	51.2	33.9	60.0	12.0	19	17.0×18.5	17.5	11.0	9.0	37.0	52.0
ELL10-PT1/2-Z2	10	R1/2	24.7	55.2	36.9	64.0	16.0	19	22.0×24.5	17.5	12.0	9.0	37.0	106.0
ELL12-PT1/4-Z2	12	R1/4	26.3	55.2	36.8	65.2	12.0	20	19.0×21.0	20.0	8.0	8.0	42.0	75.0
ELL12-PT3/8-Z2	12	R3/8	26.3	56.2	36.8	66.2	12.0	20	19.0×21.0	20.0	11.0	11.0	46.0	73.0
ELL12-PT1/2-Z2	12	R1/2	26.3	60.2	38.6	70.2	16.0	20	22.0×24.5	20.0	12.0	11.0	46.0	114.0

●Inch size type

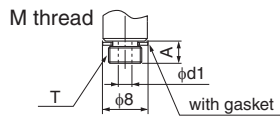
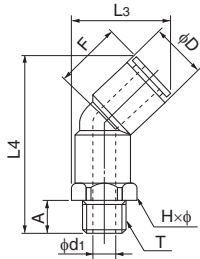


Product number	Applicable tubing outer diameter (inch)	T Thread size (M,R)	L1 (mm)	L2 (mm)	L3 (mm)	L4 (mm)	A (mm)	F Tubing insertion length (mm)	H×φ Width across flat (mm)	D (mm)	d1 (mm)	Min. inner diameter (mm)	Effective sectional area (mm ²)	Weight (g)
ELL1/4-M5	1/4	M5×0.8	18.1	34.7	24.6	41.2	4.0	15	12.0×13.0	13.0	2.0	2.0	3.0	20.0
ELL1/4-PT1/8	1/4	R1/8	18.1	37.2	24.6	43.7	8.0	15	12.0×13.0	13.0	5.0	5.0	13.0	22.0
ELL1/4-PT1/4	1/4	R1/4	18.1	41.2	25.8	47.7	11.0	15	14.0×15.4	13.0	7.0	5.0	13.0	31.0
ELL5/16-PT1/8	5/16	R1/8	20.6	40.2	28.3	47.7	8.0	16	14.0×15.4	15.0	5.0	5.0	18.5	30.0
ELL5/16-PT1/4	5/16	R1/4	20.6	44.2	28.3	51.7	11.0	16	14.0×15.4	15.0	7.0	7.0	23.0	35.0
ELL5/16-PT3/8	5/16	R3/8	20.6	45.2	29.9	52.7	12.0	16	17.0×18.5	15.0	9.0	7.0	—	—
ELL3/8-PT1/4	3/8	R1/4	24.4	50.2	33.7	59.2	11.0	19	17.0×18.5	18.0	7.0	7.0	30.0	53.0
ELL3/8-PT3/8	3/8	R3/8	24.4	51.2	33.7	60.2	12.0	19	17.0×18.5	18.0	9.0	9.0	32.0	59.0
ELL1/2-PT1/4	1/2	R1/4	26.5	55.2	37.0	66.0	11.0	21	19.0×21.0	21.5	7.0	7.0	37.0	72.0
ELL1/2-PT3/8	1/2	R3/8	26.5	56.2	37.0	67.0	12.0	21	19.0×21.0	21.5	9.0	9.0	53.0	78.0
ELL1/2-PT1/2	1/2	R1/2	26.5	60.2	38.7	71.0	15.0	21	22.0×24.5	21.5	12.0	10.0	55.5	105.0

The inch size type is not plated.

45 degree elbow

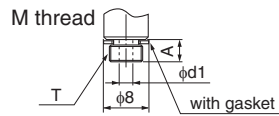
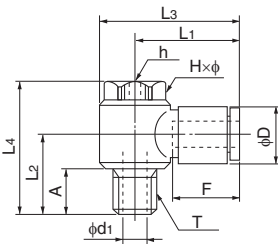
●Millimeter size type



Product number	Applicable tubing outer diameter (mm)	T Thread size (M,R)	L ₃ (mm)	L ₄ (mm)	A (mm)	F Tubing insertion length (mm)	H×φ Width across flat (mm)	D (mm)	d ₁ (mm)	Min. inner diameter (mm)	Effective sectional area (mm ²)	Weight (g)
E45L4-M5	4	M5×0.8	19.7	34.4	4.0	13	10.0×11.0	9.8	2.0	2.0	3.0	7.0
E45L4-PT1/8	4	R1/8	19.7	36.9	8.0	13	10.0×11.0	9.8	5.0	3.0	4.0	9.0
E45L4-PT1/4	4	R1/4	21.9	40.9	11.0	13	14.0×15.4	9.8	7.0	3.0	4.0	16.0
E45L6-M5	6	M5×0.8	22.4	38.6	4.0	15	12.0×13.0	12.6	2.0	2.0	3.5	10.0
E45L6-PT1/8	6	R1/8	22.4	41.1	8.0	15	12.0×13.0	12.6	5.0	5.0	12.0	12.0
E45L6-PT1/4	6	R1/4	23.6	45.1	11.0	15	14.0×15.4	12.6	7.0	5.0	12.0	18.0
E45L6-PT3/8	6	R3/8	25.2	46.1	12.0	15	17.0×18.5	12.6	9.0	5.0	12.0	26.0
E45L8-PT1/8	8	R1/8	25.5	44.0	8.0	16	14.0×15.4	14.6	5.0	5.0	18.5	15.0
E45L8-PT1/4	8	R1/4	25.5	48.0	11.0	16	14.0×15.4	14.6	7.0	7.0	23.0	20.0
E45L8-PT3/8	8	R3/8	27.0	49.0	12.0	16	17.0×18.5	14.6	9.0	7.0	23.0	28.0
E45L10-PT1/8	10	R1/8	30.0	50.0	8.0	19	17.0×18.5	17.5	5.0	5.0	22.0	22.0
E45L10-PT1/4	10	R1/4	30.0	54.0	11.0	19	17.0×18.5	17.5	7.0	7.0	34.5	27.0
E45L10-PT3/8	10	R3/8	30.0	55.0	12.0	19	17.0×18.5	17.5	9.0	9.0	37.0	33.0
E45L10-PT1/2	10	R1/2	33.0	59.0	15.0	19	22.0×24.5	17.5	12.0	9.0	38.5	52.0
E45L12-PT1/4	12	R1/4	33.5	58.7	11.0	20	19.0×21.0	20.0	7.0	7.0	43.0	34.0
E45L12-PT3/8	12	R3/8	33.5	59.7	12.0	20	19.0×21.0	20.0	9.0	9.0	47.0	40.0
E45L12-PT1/2	12	R1/2	35.3	63.7	15.0	20	22.0×24.5	20.0	12.0	10.0	47.0	57.0

Universal elbow

●Millimeter size type



Product number	Applicable tubing outer diameter (mm)	T Thread size (M,R)	L ₁ (mm)	L ₂ (mm)	L ₃ (mm)	L ₄ (mm)	A (mm)	F Tubing insertion length (mm)	H×φ Width across flat (mm)	h (mm)	D (mm)	d ₁ (mm)	Min. inner diameter (mm)	Effective sectional area (mm ²)	Weight (g)
ELB4-M5	4	M5×0.8	20.4	11.5	25.3	21.0	4.0	13	8.0×9.0	3.0	9.8	2.0	2.0	3.0	10.0
ELB4-PT1/8	4	R1/8	23.4	17.5	30.4	30.0	9.5	13	13.0×14.0	5.0	9.8	5.0	3.0	4.0	20.0
ELB6-M5	6	M5×0.8	20.8	11.5	25.6	21.0	4.0	15	8.0×9.0	3.0	12.6	2.0	2.0	3.5	10.0
ELB6-PT1/8	6	R1/8	22.8	17.5	29.8	30.0	9.5	15	13.0×14.0	5.0	12.6	5.0	3.2	8.0	21.0
ELB6-PT1/4	6	R1/4	24.8	22.9	34.5	37.5	13.4	15	17.0×18.3	6.0	12.6	7.0	4.2	9.0	43.0
ELB8-PT1/8	8	R1/8	24.4	17.5	31.4	30.0	9.5	16	13.0×14.0	5.0	14.6	5.0	3.2	9.0	41.0
ELB8-PT1/4	8	R1/4	26.4	22.9	36.1	37.5	13.4	16	17.0×18.3	6.0	14.6	7.0	4.2	14.5	44.0
ELB8-PT3/8	8	R3/8	28.4	24.4	40.4	40.5	13.9	16	21.0×22.6	8.0	14.6	9.0	6.0	19.0	69.0
ELB10-PT1/4	10	R1/4	29.4	22.9	39.1	37.5	13.4	19	17.0×18.3	6.0	17.5	7.0	4.2	15.5	74.0
ELB10-PT3/8	10	R3/8	31.4	24.4	43.4	40.5	13.9	19	21.0×22.6	8.0	17.5	9.0	6.0	23.0	74.0
ELB12-PT3/8	12	R3/8	34.3	24.3	48.3	40.5	13.8	20	24.0×26.0	8.0	20.0	10.0	8.0	25.5	92.0
ELB12-PT1/2	12	R1/2	34.3	27.3	48.3	43.5	16.8	20	24.0×26.0	8.0	20.0	12.0	8.0	25.5	100.0

Tubing

Clean tubing

Processed tubing

PushOne fitting

QuickSeal fitting

Clean fitting/ Chemifit

Bamboo-shoot fitting

Control switch/ Detachable series

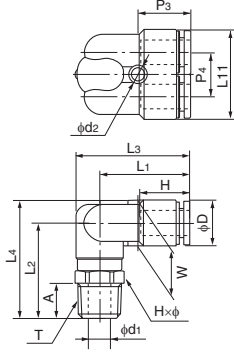
Jig/Tool/ Accessory

Technical information

Reference

90 degree branch elbow

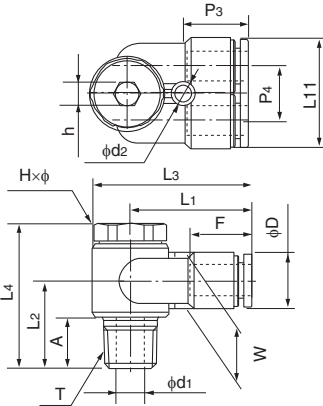
●Millimeter size type



Product number	Applicable tubing outer diameter (mm)	T Thread size (R)	L ₁ (mm)	L ₂ (mm)	L ₃ (mm)	L ₄ (mm)	L ₁₁ (mm)	A (mm)	F Tubing insertion length (mm)	H×φ Width across flat (mm)	P ₃ (mm)	P ₄ (mm)	W (mm)	D (mm)	d ₁ (mm)	d ₂ (mm)	Effective sectional area (mm ²)	Weight (g)
ELY6-PT1/8	6	R1/8	25.6	25.2	32.1	31.5	24.8	8.0	15	12.0×13.0	14.8	12.2	12.6	12.6	5.0	4.2	—	16.0
ELY6-PT1/4	6	R1/4	25.6	29.2	33.3	35.5	24.8	11.0	15	14.0×15.4	14.8	12.2	12.6	12.6	7.0	4.2	—	23.0
ELY8-PT1/8	8	R1/8	28.2	26.2	35.9	33.5	28.8	8.0	16	14.0×15.4	16.4	14.2	14.6	14.6	5.0	4.2	—	21.0
ELY8-PT1/4	8	R1/4	28.2	30.2	35.9	37.5	28.8	11.0	16	14.0×15.4	16.4	14.2	14.6	14.6	7.0	4.2	—	27.0
ELY8-PT3/8	8	R3/8	28.2	31.2	37.5	38.5	28.8	12.0	16	17.0×18.5	16.4	14.2	14.6	14.6	9.0	4.2	—	35.0
ELY10-PT1/4	10	R1/4	31.3	33.2	40.5	42.0	35.0	11.0	19	17.0×18.5	18.4	17.5	17.5	17.5	7.0	4.2	—	37.0
ELY10-PT3/8	10	R3/8	31.3	34.2	40.5	43.0	35.0	12.0	19	17.0×18.5	18.4	17.5	17.5	17.5	9.0	4.2	—	43.0

Universal branch elbow

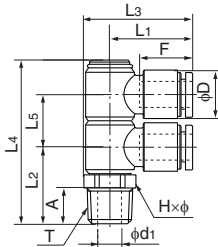
●Millimeter size type



Product number	Applicable tubing outer diameter (mm)	T Thread size (R)	L ₁ (mm)	L ₂ (mm)	L ₃ (mm)	L ₄ (mm)	L ₁₁ (mm)	A (mm)	F Tubing insertion length (mm)	H×φ Width across flat (mm)	h Width across flat (mm)	P ₃ (mm)	P ₄ (mm)	W (mm)	D (mm)	d ₁ (mm)	d ₂ (mm)	Effective sectional area (mm ²)	Weight (g)
ELYB6-PT1/8	6	R1/8	26.1	17.5	33.1	30.0	24.8	9.5	15	13.0×14.0	5.0	14.8	12.2	12.6	12.6	5.0	4.2	—	25.0
ELYB6-PT1/4	6	R1/4	29.0	22.9	38.7	37.5	24.8	13.4	15	17.0×18.3	6.0	14.8	12.2	12.6	12.6	7.0	4.2	—	46.0
ELYB8-PT1/4	8	R1/4	30.6	22.9	40.3	37.5	28.8	13.4	16	17.0×18.3	6.0	16.4	14.2	14.6	14.6	7.0	4.2	—	49.0
ELYB8-PT3/8	8	R3/8	32.9	24.4	44.9	40.5	28.8	13.9	16	21.0×22.6	8.0	16.4	14.2	14.6	14.6	9.0	4.2	—	58.0
ELYB10-PT1/4	10	R1/4	34.9	23.4	46.9	39.5	35.0	12.9	19	21.0×22.6	8.0	18.4	17.5	17.5	17.5	7.0	4.2	—	78.0
ELYB10-PT3/8	10	R3/8	34.9	24.4	46.9	40.5	35.0	13.9	19	21.0×22.6	8.0	18.4	17.5	17.5	17.5	9.0	4.2	—	80.0

Double universal elbow

●Millimeter size type



Product number	Applicable tubing outer diameter (mm)	T Thread size (R)	L ₁ (mm)	L ₂ (mm)	L ₃ (mm)	L ₄ (mm)	L ₅ (mm)	A (mm)	F Tubing insertion length (mm)	H×φ Width across flat (mm)	D (mm)	d ₁ (mm)	Effective sectional area (mm ²)	Weight (g)
ELWB6-PT1/8	6	R1/8	22.8	18.8	30.5	42.3	13.5	8.0	15	14.0×15.4	12.6	5.0	—	33.0
ELWB6-PT1/4	6	R1/4	22.8	21.8	30.5	45.3	13.5	11.0	15	14.0×15.4	12.6	7.0	—	35.0
ELWB8-PT1/4	8	R1/4	24.4	23.0	32.1	50.0	16.0	11.0	16	14.0×15.4	14.6	7.0	—	39.0
ELWB8-PT3/8	8	R3/8	24.4	24.0	33.7	51.0	16.0	12.0	16	17.0×18.5	14.6	9.0	—	47.0
ELWB10-PT1/4	10	R1/4	29.4	24.5	39.1	56.0	19.0	11.0	19	17.0×18.5	17.5	7.0	—	72.0
ELWB10-PT3/8	10	R3/8	29.4	25.5	39.1	57.0	19.0	12.0	19	17.0×18.5	17.5	9.0	—	70.0

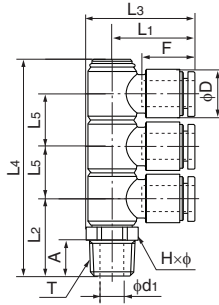
Tubing
Clean tubing
Processed tubing
PushOne fitting
QuickSeal fitting
Clean fitting/Chemifit
Bamboo-shoot fitting
Control switch/Detachable series
Jig/Tool/Accessory
Technical information
Reference

Triple universal elbow

●Millimeter size type



Product number	Applicable tubing outer diameter (mm)	T Thread size (R)	L ₁ (mm)	L ₂ (mm)	L ₃ (mm)	L ₄ (mm)	L ₅ (mm)	A (mm)	F Tubing insertion length (mm)	H×φ Width across flat (mm)	D (mm)	d ₁ (mm)	Effective sectional area (mm ²)	Weight (g)
ELTB6-PT1/8	6	R1/8	22.8	18.8	30.5	55.5	13.5	8.0	15	14.0×15.4	12.6	5.0	—	43.0
ELTB6-PT1/4	6	R1/4	22.8	21.8	30.5	58.5	13.5	11.0	15	14.0×15.4	12.6	7.0	—	45.0
ELTB8-PT1/4	8	R1/4	24.4	23.0	32.1	66.0	16.0	11.0	16	14.0×15.4	14.6	7.0	—	51.0
ELTB8-PT3/8	8	R3/8	24.4	24.0	33.7	67.0	16.0	12.0	16	17.0×18.5	14.6	9.0	—	59.0
ELTB10-PT1/4	10	R1/4	29.4	24.5	39.1	75.5	19.0	11.0	19	17.0×18.5	17.5	7.0	—	98.0
ELTB10-PT3/8	10	R3/8	29.4	25.5	39.1	76.5	19.0	12.0	19	17.0×18.5	17.5	9.0	—	92.0

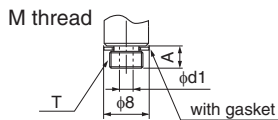
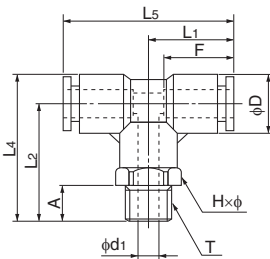


Tee

●Millimeter size type



Product number	Applicable tubing outer diameter (mm)	T Thread size (M,R)	L ₁ (mm)	L ₂ (mm)	L ₄ (mm)	L ₅ (mm)	A (mm)	F Tubing insertion length (mm)	H×φ Width across flat (mm)	D (mm)	d ₁ (mm)	Min. inner diameter (mm)	Effective sectional area (mm ²)	Weight (g)
ET4-M5	4	M5×0.8	17.2	20.2	25.1	34.4	4.0	13	10.0×11.0	9.8	2.0	2.0	3.0	8.0
ET4-PT1/8	4	R1/8	17.2	22.7	27.6	34.4	8.0	13	10.0×11.0	9.8	5.0	3.0	4.0	10.0
ET4-PT1/4	4	R1/4	17.2	26.7	31.6	34.4	11.0	13	14.0×15.4	9.8	7.0	3.0	4.0	17.0
ET6-M5	6	M5×0.8	18.5	22.7	29.0	37.0	4.0	15	12.0×13.0	12.6	2.0	2.0	3.5	12.0
ET6-PT1/8	6	R1/8	18.5	25.2	31.5	37.0	8.0	15	12.0×13.0	12.6	5.0	4.6	12.0	14.0
ET6-PT1/4	6	R1/4	18.5	29.2	35.5	37.0	11.0	15	14.0×15.4	12.6	7.0	4.6	12.0	21.0
ET6-PT3/8	6	R3/8	18.5	30.2	36.5	37.0	12.0	15	17.0×18.5	12.6	9.0	4.6	12.0	29.0
ET8-PT1/8	8	R1/8	20.7	26.2	33.5	41.4	8.0	16	14.0×15.4	14.6	5.0	5.0	18.5	18.0
ET8-PT1/4	8	R1/4	20.7	30.2	37.5	41.4	11.0	16	14.0×15.4	14.6	7.0	7.0	23.0	24.0
ET8-PT3/8	8	R3/8	20.7	31.2	38.5	41.4	12.0	16	17.0×18.5	14.6	9.0	7.0	23.0	32.0
ET10-PT1/8	10	R1/8	24.7	29.2	38.0	49.3	8.0	19	17.0×18.5	17.5	5.0	5.0	22.0	28.0
ET10-PT1/4	10	R1/4	24.7	33.2	42.0	49.3	11.0	19	17.0×18.5	17.5	7.0	7.0	34.5	34.0
ET10-PT3/8	10	R3/8	24.7	34.2	43.0	49.3	12.0	19	17.0×18.5	17.5	9.0	9.0	37.0	39.0
ET10-PT1/2	10	R1/2	24.7	38.2	47.0	49.3	15.0	19	22.0×24.5	17.5	12.0	9.0	37.0	58.0
ET12-PT1/4	12	R1/4	26.3	35.7	45.7	52.6	11.0	20	19.0×21.0	20.0	7.0	7.0	36.0	43.0
ET12-PT3/8	12	R3/8	26.3	36.7	46.7	52.6	12.0	20	19.0×21.0	20.0	9.0	9.0	43.0	48.0
ET12-PT1/2	12	R1/2	26.3	40.7	50.7	52.6	15.0	20	22.0×24.5	20.0	12.0	10.0	43.0	65.0
ET16-PT3/8	16	R3/8	34.9	45.0	59.0	69.8	12.0	27	24.0×27.0	28.0	11.0	11.0	70.0	92.0
ET16-PT1/2	16	R1/2	34.9	48.0	62.0	69.8	15.0	27	24.0×27.0	28.0	12.0	12.0	93.0	106.0

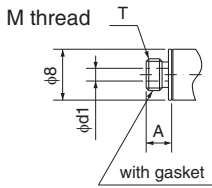
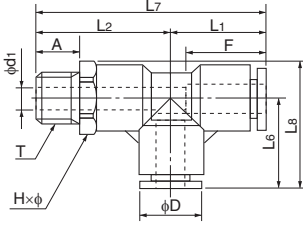


●Inch size type

Product number	Applicable tubing outer diameter (inch)	T Thread size (M,R)	L ₁ (mm)	L ₂ (mm)	L ₄ (mm)	L ₅ (mm)	A (mm)	F Tubing insertion length (mm)	H×φ Width across flat (mm)	D (mm)	d ₁ (mm)	Min. inner diameter (mm)	Effective sectional area (mm ²)	Weight (g)
ET1/4-PT1/8	1/4	R1/8	18.1	25.2	31.7	36.2	8.0	15	12.0×13.0	13.0	5.0	4.6	13.0	14.0
ET1/4-PT1/4	1/4	R1/4	18.1	29.2	35.7	36.2	11.0	15	14.0×15.4	13.0	7.0	4.6	13.0	21.0
ET5/16-PT1/8	5/16	R1/8	20.6	26.2	33.7	41.2	8.0	16	14.0×15.4	15.0	5.0	5.0	18.5	18.0
ET5/16-PT1/4	5/16	R1/4	20.6	30.2	37.7	41.2	11.0	16	14.0×15.4	15.0	7.0	7.0	23.0	24.0
ET5/16-PT3/8	5/16	R3/8	20.6	31.2	38.7	41.2	12.0	16	17.0×18.5	15.0	9.0	7.0	—	—
ET3/8-PT1/4	3/8	R1/4	24.4	33.2	42.2	48.8	11.0	19	17.0×18.5	18.0	7.0	7.0	30.0	34.0
ET3/8-PT3/8	3/8	R3/8	24.4	34.2	43.2	48.8	12.0	19	17.0×18.5	18.0	9.0	9.0	32.0	39.0
ET3/8-PT1/2	3/8	R1/2	24.4	38.2	47.2	48.8	15.0	19	22.0×24.5	18.0	12.0	9.0	32.0	58.0
ET1/2-PT3/8	1/2	R3/8	27.5	37.0	47.8	54.9	12.0	21	19.0×21.0	21.5	9.0	9.0	53.0	48.0
ET1/2-PT1/2	1/2	R1/2	27.5	41.0	51.8	54.9	15.0	21	22.0×24.5	21.5	12.0	10.0	55.5	65.0

☞ The inch size type is not plated.

Service tee



●Millimeter size type

Product number	Applicable tubing outer diameter (mm)	T Thread size (M,R)	L ₁ (mm)	L ₂ (mm)	L ₃ (mm)	L ₄ (mm)	L ₅ (mm)	A (mm)	F Tubing insertion length (mm)	H×φ Width across flat (mm)	D (mm)	d ₁ (mm)	Min. inner diameter (mm)	Effective sectional area (mm ²)	Weight (g)
EST4-M5	4	M5×0.8	17.2	20.2	17.2	37.4	22.7	4.0	13	10.0×11.0	9.8	2.0	2.0	3.0	8.0
EST4-PT1/8	4	R1/8	17.2	22.7	17.2	39.9	22.7	8.0	13	10.0×11.0	9.8	5.0	3.0	4.0	10.0
EST4-PT1/4	4	R1/4	17.2	26.7	17.2	43.9	24.9	11.0	13	14.0×15.4	9.8	7.0	3.0	4.0	18.0
EST6-M5	6	M5×0.8	18.5	22.7	18.5	41.2	25.0	4.0	15	12.0×13.0	12.6	2.0	2.0	3.5	12.0
EST6-PT1/8	6	R1/8	18.5	25.2	18.5	43.7	25.0	8.0	15	12.0×13.0	12.6	5.0	5.0	12.0	14.0
EST6-PT1/4	6	R1/4	18.5	29.2	18.5	47.7	26.2	11.0	15	14.0×15.4	12.6	7.0	5.0	12.0	21.0
EST6-PT3/8	6	R3/8	18.5	30.2	18.5	48.7	27.8	12.0	15	17.0×18.5	12.6	9.0	5.0	12.0	29.0
EST8-PT1/8	8	R1/8	20.7	26.2	20.7	46.9	28.4	8.0	16	14.0×15.4	14.6	5.0	5.0	18.5	18.0
EST8-PT1/4	8	R1/4	20.7	30.2	20.7	50.9	28.4	11.0	16	14.0×15.4	14.6	7.0	7.0	23.0	24.0
EST8-PT3/8	8	R3/8	20.7	31.2	20.7	51.9	30.0	12.0	16	17.0×18.5	14.6	9.0	7.0	23.0	32.0
EST10-PT1/8	10	R1/8	24.7	29.2	24.7	53.9	33.9	8.0	19	17.0×18.5	17.5	5.0	5.0	22.0	28.0
EST10-PT1/4	10	R1/4	24.7	33.2	24.7	57.9	33.9	11.0	19	17.0×18.5	17.5	7.0	7.0	34.5	34.0
EST10-PT3/8	10	R3/8	24.7	34.2	24.7	58.9	33.9	12.0	19	17.0×18.5	17.5	9.0	9.0	37.0	40.0
EST10-PT1/2	10	R1/2	24.7	38.2	24.7	62.9	36.9	15.0	19	22.0×24.5	17.5	12.0	9.0	37.0	58.0
EST12-PT1/4	12	R1/4	26.3	35.7	26.3	62.0	36.8	11.0	20	19.0×21.0	20.0	7.0	7.0	36.0	43.0
EST12-PT3/8	12	R3/8	26.3	36.7	26.3	63.0	36.8	12.0	20	19.0×21.0	20.0	9.0	9.0	43.0	48.0
EST12-PT1/2	12	R1/2	26.3	40.7	26.3	67.0	38.6	15.0	20	22.0×24.5	20.0	12.0	10.0	43.0	65.0
EST16-PT3/8	16	R3/8	34.9	45.0	34.9	79.9	48.4	12.0	27	24.0×27.0	28.0	11.0	11.0	70.0	92.0
EST16-PT1/2	16	R1/2	34.9	48.0	34.9	82.9	48.4	15.0	27	24.0×27.0	28.0	12.0	12.0	93.0	106.0

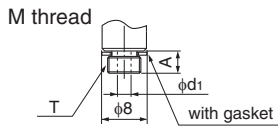
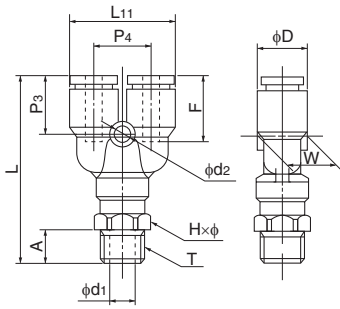
●Inch size type

Product number	Applicable tubing outer diameter (inch)	T Thread size (R)	L ₁ (mm)	L ₂ (mm)	L ₃ (mm)	L ₄ (mm)	L ₅ (mm)	A (mm)	F Tubing insertion length (mm)	H×φ Width across flat (mm)	D (mm)	d ₁ (mm)	Min. inner diameter (mm)	Effective sectional area (mm ²)	Weight (g)
EST1/4-PT1/8	1/4	R1/8	18.1	25.2	18.1	43.3	24.6	8.0	15	12.0×13.0	13.0	5.0	5.0	13.0	14.0
EST1/4-PT1/4	1/4	R1/4	18.1	29.2	18.1	47.3	25.8	11.0	15	14.0×15.4	13.0	7.0	5.0	13.0	21.0
EST5/16-PT1/8	5/16	R1/8	20.6	26.2	20.6	46.8	28.3	8.0	16	14.0×15.4	15.0	5.0	5.0	18.5	18.0
EST5/16-PT1/4	5/16	R1/4	20.6	30.2	20.6	50.8	28.3	11.0	16	14.0×15.4	15.0	7.0	7.0	23.0	24.0
EST5/16-PT3/8	5/16	R3/8	20.6	31.2	20.6	51.8	29.9	12.0	16	17.0×18.5	15.0	9.0	7.0	—	—
EST3/8-PT1/4	3/8	R1/4	24.4	33.2	24.4	57.6	33.7	11.0	19	17.0×18.5	18.0	7.0	7.0	30.0	34.0
EST3/8-PT3/8	3/8	R3/8	24.4	34.2	24.4	58.6	33.7	12.0	19	17.0×18.5	18.0	9.0	9.0	32.0	40.0
EST3/8-PT1/2	3/8	R1/2	24.4	38.2	24.4	62.6	36.7	15.0	19	22.0×24.5	18.0	12.0	9.0	32.0	58.0
EST1/2-PT3/8	1/2	R3/8	27.5	37.0	27.5	64.5	38.0	12.0	21	19.0×21.0	21.5	9.0	9.0	53.0	48.0
EST1/2-PT1/2	1/2	R1/2	27.5	41.0	27.5	68.5	39.7	15.0	21	22.0×24.5	21.5	12.0	10.0	55.5	65.0

☞ The inch size type is not plated.

Tubing
Clean tubing
Processed tubing
PushOne fitting
QuickSeal fitting
Clean fitting/Chemifit
Bamboo-shoot fitting
Control switch/Detachable series
Jig/Tool/Accessory
Technical information
Reference

Y joint



●Millimeter size type

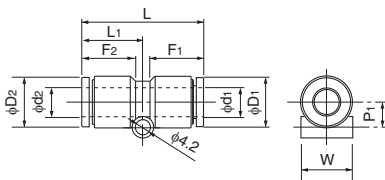
Product number	Applicable tubing outer diameter (mm)	T Thread size (M,R)	L (mm)	L ₁₁ (mm)	A (mm)	F Tubing insertion length (mm)	H×φ Width across flat (mm)	P ₃ (mm)	P ₄ (mm)	W (mm)	D (mm)	d ₁ (mm)	d ₂ (mm)	Min. inner diameter (mm)	Effective sectional area (mm ²)	Weight (g)
EY4-M5	4	M5×0.8	37.9	20.8	4.0	13	10.0×11.0	13.4	11.0	9.8	9.8	2.0	3.2	2.0	2.5	9.0
EY4-PT1/8	4	R1/8	40.4	20.8	8.0	13	10.0×11.0	13.4	11.0	9.8	9.8	5.0	3.2	3.0	3.5	11.0
EY4-PT1/4	4	R1/4	44.4	20.8	11.0	13	14.0×15.4	13.4	11.0	9.8	9.8	7.0	3.2	3.0	3.5	18.0
EY6-M5	6	M5×0.8	41.3	24.8	4.0	15	12.0×13.0	14.8	12.2	12.5	12.6	2.0	4.2	2.0	2.5	13.0
EY6-PT1/8	6	R1/8	43.8	24.8	8.0	15	12.0×13.0	14.8	12.2	12.5	12.6	5.0	4.2	5.0	9.0	15.0
EY6-PT1/4	6	R1/4	47.8	24.8	11.0	15	14.0×15.4	14.8	12.2	12.5	12.6	7.0	4.2	5.0	9.0	22.0
EY6-PT3/8	6	R3/8	48.8	24.8	12.0	15	17.0×18.5	14.8	12.2	12.5	12.6	9.0	4.2	5.0	9.0	30.0
EY8-PT1/8	8	R1/8	46.9	28.8	8.0	16	14.0×15.4	16.4	14.2	14.6	14.6	5.0	4.2	5.0	17.5	20.0
EY8-PT1/4	8	R1/4	50.9	28.8	11.0	16	14.0×15.4	16.4	14.2	14.6	14.6	7.0	4.2	7.0	20.0	25.0
EY8-PT3/8	8	R3/8	51.9	28.8	12.0	16	17.0×18.5	16.4	14.2	14.6	14.6	9.0	4.2	7.0	20.0	33.0
EY10-PT1/4	10	R1/4	55.9	35.0	11.0	19	17.0×18.5	18.4	17.5	17.5	17.5	7.0	4.2	7.0	27.5	33.0
EY10-PT3/8	10	R3/8	56.9	35.0	12.0	19	17.0×18.5	18.4	17.5	17.5	17.5	9.0	4.2	9.0	28.0	41.0
EY10-PT1/2	10	R1/2	60.9	35.0	15.0	19	22.0×24.5	18.4	17.5	17.5	17.5	12.0	4.2	9.0	28.0	60.0
EY12-PT1/4	12	R1/4	60.8	40.0	11.0	20	19.0×21.0	20.3	20.0	20.0	20.0	7.0	4.2	7.0	34.5	47.0
EY12-PT3/8	12	R3/8	61.8	40.0	12.0	20	19.0×21.0	20.3	20.0	20.0	20.0	9.0	4.2	9.0	40.0	52.0
EY12-PT1/2	12	R1/2	65.8	40.0	15.0	20	22.0×24.5	20.3	20.0	20.0	20.0	12.0	4.2	10.0	40.0	70.0
EY16-PT3/8	16	R3/8	78.6	55.5	12.0	27	24.0×27.0	26.6	27.5	27.5	28.0	11.0	4.2	11.0	70.0	103.0
EY16-PT1/2	16	R1/2	81.6	55.5	15.0	27	24.0×27.0	26.6	27.5	27.5	28.0	12.0	4.2	12.0	71.0	117.0

●Inch size type

Product number	Applicable tubing outer diameter (inch)	T Thread size (R)	L (mm)	L ₁₁ (mm)	A (mm)	F Tubing insertion length (mm)	H×φ Width across flat (mm)	P ₃ (mm)	P ₄ (mm)	W (mm)	D (mm)	d ₁ (mm)	d ₂ (mm)	Min. inner diameter (mm)	Effective sectional area (mm ²)	Weight (g)
EY1/4-PT1/8	1/4	R1/8	43.4	25.2	8.0	15	12.0×13.0	14.4	12.2	12.5	13.0	5.0	4.2	5.0	10.5	15.0
EY1/4-PT1/4	1/4	R1/4	47.4	25.2	11.0	15	14.0×15.4	14.4	12.2	12.5	13.0	7.0	4.2	5.0	10.5	22.0
EY5/16-PT1/8	5/16	R1/8	46.8	29.2	8.0	16	14.0×15.4	16.3	14.2	14.5	15.0	5.0	4.2	5.0	17.5	20.0
EY5/16-PT1/4	5/16	R1/4	50.8	29.2	11.0	16	14.0×15.4	16.3	14.2	14.5	15.0	7.0	4.2	7.0	20.0	25.0
EY5/16-PT3/8	5/16	R3/8	51.8	29.2	12.0	16	17.0×18.5	16.3	14.2	14.5	15.0	9.0	4.2	7.0	—	—
EY3/8-PT1/4	3/8	R1/4	55.6	35.5	11.0	19	17.0×18.5	18.1	17.5	17.5	18.0	7.0	4.2	7.0	26.0	33.0
EY3/8-PT3/8	3/8	R3/8	56.6	35.5	12.0	19	17.0×18.5	18.1	17.5	17.5	18.0	9.0	4.2	9.0	26.0	41.0
EY1/2-PT1/4	1/2	R1/4	62.5	42.5	11.0	21	19.0×21.0	20.5	21.0	21.0	21.5	7.0	4.2	7.0	37.0	47.0
EY1/2-PT3/8	1/2	R3/8	63.5	42.5	12.0	21	19.0×21.0	20.5	21.0	21.0	21.5	9.0	4.2	9.0	48.0	52.0
EY1/2-PT1/2	1/2	R1/2	67.5	42.5	15.0	21	22.0×24.5	20.5	21.0	21.0	21.5	12.0	4.2	11.0	48.0	70.0

↳ The inch size type is not plated.

Union connector



●Millimeter size type

Product number	d ₁ Applicable tubing outer diameter (mm)	d ₂ Applicable tubing outer diameter (mm)	L (mm)	L ₁ (mm)	P ₁ (mm)	F ₁ Tubing insertion length (mm)	F ₂ Tubing insertion length (mm)	D ₁ (mm)	D ₂ (mm)	W (mm)	Min. inner diameter (mm)	Effective sectional area (mm ²)	Weight (g)
EUC4	4	4	31.8	15.9	5.0	13	13	9.8	9.8	9.7	3.0	3.5	4.0
EUC4-6	4	6	32.7	16.8	6.0	13	15	9.8	12.6	12.5	3.0	3.5	5.0
EUC6	6	6	33.6	16.8	6.0	15	15	12.6	12.6	12.5	5.0	12.5	6.0
EUC6-8	6	8	34.7	17.9	7.0	15	16	12.6	14.6	14.5	5.0	11.5	7.0
EUC8	8	8	35.8	17.9	7.0	16	16	14.6	14.6	14.5	7.0	28.0	8.0
EUC8-10	8	10	38.8	20.9	8.5	16	19	14.6	17.5	17.5	7.0	31.5	11.0
EUC10	10	10	41.7	20.9	8.5	19	19	17.5	17.5	17.5	9.0	45.0	14.0
EUC10-12	10	12	42.7	21.8	9.8	19	20	17.5	20.0	20.0	9.0	53.0	17.0
EUC12	12	12	43.6	21.8	9.8	20	20	20.0	20.0	20.0	11.0	67.0	19.0
EUC16	16	16	56.2	28.1	13.8	27	27	28.0	28.0	27.5	13.0	110.0	48.0

●Inch size type

Product number	d ₁ Applicable tubing outer diameter (inch)	d ₂ Applicable tubing outer diameter (inch)	L (mm)	L ₁ (mm)	P ₁ (mm)	F ₁ Tubing insertion length (mm)	F ₂ Tubing insertion length (mm)	D ₁ (mm)	D ₂ (mm)	W (mm)	Min. inner diameter (mm)	Effective sectional area (mm ²)	Weight (g)
EUC1/4	1/4	1/4	32.8	16.4	6.0	15	15	13.0	13.0	12.5	5.0	12.5	6.0
EUC5/16	5/16	5/16	35.6	17.8	7.0	16	16	15.0	15.0	14.5	7.0	28.0	8.0
EUC3/8	3/8	3/8	41.2	20.6	8.5	19	19	18.0	18.0	17.5	9.0	35.0	14.0
EUC1/2	1/2	1/2	43.9	22.0	10.3	21	21	21.5	21.5	21.0	11.0	65.0	19.0

↳ The inch size type is not plated.

Tubing

Clean tubing

Processed tubing

PushOne fitting

QuickSeal fitting

Clean fitting/Chemifit

Bamboo-shoot fitting

Control switch/Detachable series

Jig/Tool/Accessory

Technical information

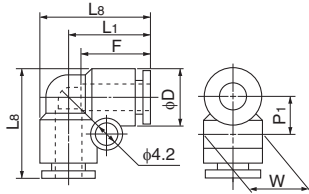
Reference

90 degree union elbow

●Millimeter size type



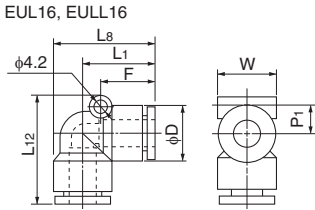
Product number	Applicable tubing outer diameter (mm)	L ₁ (mm)	L ₈ (mm)	P ₁ (mm)	F Tubing insertion length (mm)	D (mm)	W (mm)	Min. inner diameter (mm)	Effective sectional area (mm ²)	Weight (g)
EUL4	4	17.2	22.1	6.9	13	9.8	9.7	3.0	3.5	4.0
EUL6	6	18.5	24.8	8.3	15	12.6	12.5	5.0	9.5	6.0
EUL8	8	20.7	28.0	9.3	16	14.6	14.5	7.0	19.5	9.0
EUL10	10	24.7	33.4	10.8	19	17.5	17.5	9.0	32.5	15.0
EUL12	12	26.3	36.3	12.1	20	20.0	20.0	11.0	45.5	20.0



Product number	Applicable tubing outer diameter (mm)	L ₁ (mm)	L ₈ (mm)	L ₁₂ (mm)	P ₁ (mm)	F Tubing insertion length (mm)	D (mm)	W (mm)	Min. inner diameter (mm)	Effective sectional area (mm ²)	Weight (g)
EUL16	16	34.9	48.9	50.8	12.9	27	28.0	27.5	13.0	97.5	50.0
EULL16	16	34.9	48.9	61.5	12.9	27	28.0	27.5	13.0	96.5	56.0

*EUL16 and EULL16 have a different screw hole position.
*EULL16 is made to order.

●Inch size type



Product number	Applicable tubing outer diameter (inch)	L ₁ (mm)	L ₈ (mm)	P ₁ (mm)	F Tubing insertion length (mm)	D (mm)	W (mm)	Min. inner diameter (mm)	Effective sectional area (mm ²)	Weight (g)
EUL1/4	1/4	18.1	24.6	8.3	15	13.0	12.5	5.0	12.0	6.0
EUL5/16	5/16	20.6	28.1	9.3	16	15.0	14.5	7.0	20.0	9.0
EUL3/8	3/8	24.4	33.4	10.8	19	18.0	17.5	9.0	27.0	15.0
EUL1/2	1/2	27.5	38.2	12.6	21	21.5	21.0	11.0	54.5	20.0

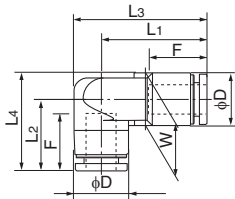
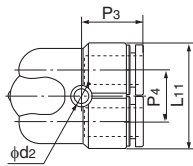
The inch size type is not plated.

90 degree branch union elbow

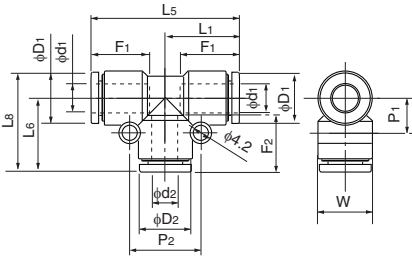
●Millimeter size type



Product number	Applicable tubing outer diameter (mm)	L ₁ (mm)	L ₂ (mm)	L ₃ (mm)	L ₄ (mm)	L ₁₁ (mm)	F Tubing insertion length (mm)	P ₃ (mm)	P ₄ (mm)	W (mm)	D (mm)	d ₂ (mm)	Min. inner diameter (mm)	Effective sectional area (mm ²)	Weight (g)
EULY6	6	25.6	18.0	31.9	24.3	24.8	15	14.8	12.2	12.6	12.6	4.2	5.0	—	10.0
EULY8	8	28.2	19.6	35.5	26.9	28.8	16	16.4	14.2	14.6	14.6	4.2	7.0	—	14.0
EULY10	10	31.3	22.6	40.0	31.3	35.0	19	18.4	17.5	17.5	17.5	4.2	9.0	—	23.0



Union tee



●Millimeter size type

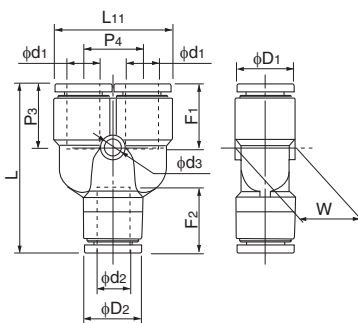
Product number	d1 Applicable tubing outer diameter (mm)	d2 Applicable tubing outer diameter (inch)	L1 (mm)	L5 (mm)	L6 (mm)	L8 (mm)	F1 Tubing insertion length (mm)	F2 Tubing insertion length (mm)	P1 (mm)	P2 (mm)	D1 (mm)	D2 (mm)	W (mm)	Min. inner diameter (mm)	Effective sectional area (mm ²)	Weight (g)
EUT4	4	4	17.2	34.4	17.2	22.1	13	13	6.9	14.0	9.8	9.8	9.7	3.0	3.5	6.0
EUT4-6	4	6	17.7	35.4	18.0	22.9	13	15	6.8	17.0	9.8	12.6	12.5	3.0	2.5	8.0
EUT6	6	6	18.5	37.0	18.5	24.8	15	15	8.3	17.0	12.6	12.6	12.5	5.0	4.5	9.0
EUT6-8	6	8	19.5	39.0	20.4	26.7	15	16	8.2	19.0	12.6	14.6	14.5	5.0	15.5	11.0
EUT8	8	8	20.7	41.4	20.7	28.0	16	16	9.3	19.0	14.6	14.6	14.5	7.0	19.5	13.0
EUT8-10	8	10	21.7	43.4	24.4	31.7	16	19	9.2	22.0	14.6	17.5	17.5	7.0	21.0	18.0
EUT10	10	10	24.7	49.3	24.7	33.4	19	19	10.8	22.0	17.5	17.5	17.5	9.0	32.5	22.0
EUT10-12	10	12	25.6	51.1	26.3	35.1	19	20	10.8	24.0	17.5	20.0	20.0	9.0	27.0	26.0
EUT12	12	12	26.3	52.6	26.3	36.3	20	20	12.1	24.0	20.0	20.0	20.0	11.0	45.5	29.0
EUT16	16	16	34.9	69.8	34.9	48.9	27	27	15.9	31.7	28.0	28.0	27.5	13.0	97.0	73.0

●Inch size type

Product number	d1 Applicable tubing outer diameter (mm)	d2 Applicable tubing outer diameter (inch)	L1 (mm)	L5 (mm)	L6 (mm)	L8 (mm)	F1 Tubing insertion length (mm)	F2 Tubing insertion length (mm)	P1 (mm)	P2 (mm)	D1 (mm)	D2 (mm)	W (mm)	Min. inner diameter (mm)	Effective sectional area (mm ²)	Weight (g)
EUT1/4	1/4	1/4	18.1	36.2	18.1	24.6	15	15	8.3	17.0	13.0	13.0	12.5	5.0	12.0	9.0
EUT5/16	5/16	5/16	20.6	41.2	20.6	28.1	16	16	9.3	19.0	15.0	15.0	14.5	7.0	20.0	13.0
EUT3/8	3/8	3/8	24.4	48.8	24.4	33.4	19	19	10.8	22.0	18.0	18.0	17.5	9.0	27.0	22.0
EUT1/2	1/2	1/2	27.5	54.9	27.5	38.2	21	21	12.6	25.0	21.5	21.5	21.0	11.0	54.5	29.0

The inch size type is not plated.

Y union



●Millimeter size type

Product number	d1 Applicable tubing outer diameter (mm)	d2 Applicable tubing outer diameter (inch)	L (mm)	L11 (mm)	F1 Tubing insertion length (mm)	F2 Tubing insertion length (mm)	P3 (mm)	P4 (mm)	W (mm)	D1 (mm)	D2 (mm)	d3 (mm)	Min. inner diameter (mm)	Effective sectional area (mm ²)	Weight (g)
EYB4-4	4	4	33.8	20.8	13	13	13.4	11.0	9.8	9.8	9.8	3.2	3.0	3.0	6.0
EYB4-6	4	6	34.2	20.8	13	15	13.4	11.0	12.5	9.8	12.6	3.2	3.0	2.5	8.0
EYB6-6	6	6	37.5	24.8	15	15	14.8	12.2	12.5	12.6	12.6	4.2	5.0	8.0	10.0
EYB6-8	6	8	39.2	24.8	15	16	14.8	12.2	14.5	12.6	14.6	4.2	5.0	17.0	12.0
EYB8-8	8	8	42.9	28.8	16	16	16.4	14.2	14.6	14.6	14.6	4.2	7.0	18.0	14.0
EYB8-10	8	10	44.8	28.8	16	19	16.4	14.2	17.5	14.6	17.5	4.2	7.0	22.5	19.0
EYB10-10	10	10	48.3	35.0	19	19	18.4	17.5	17.5	17.5	17.5	4.2	9.0	27.0	24.0
EYB10-12	10	12	49.4	35.0	19	20	18.4	17.5	20.0	17.5	20.0	4.2	9.0	30.0	29.0
EYB12-12	12	12	54.0	40.0	20	20	20.3	20.0	20.0	20.0	20.0	4.2	11.0	38.5	33.0

●Inch size type

Product number	d1 Applicable tubing outer diameter (mm)	d2 Applicable tubing outer diameter (inch)	L (mm)	L11 (mm)	F1 Tubing insertion length (mm)	F2 Tubing insertion length (mm)	P3 (mm)	P4 (mm)	W (mm)	D1 (mm)	D2 (mm)	d3 (mm)	Min. inner diameter (mm)	Effective sectional area (mm ²)	Weight (g)
EYB1/4	1/4	1/4	36.7	25.2	15	15	14.4	12.2	12.5	13.0	13.0	4.2	5.0	10.5	10.0
EYB5/16	5/16	5/16	42.7	29.2	16	16	16.3	14.2	14.5	15.0	15.0	4.2	7.0	19.5	14.0
EYB3/8	3/8	3/8	47.8	35.5	19	19	18.1	17.5	17.5	18.0	18.0	4.2	9.0	24.0	24.0
EYB1/2	1/2	1/2	55.8	42.5	21	21	20.5	21.0	21.0	21.5	21.5	4.2	11.0	46.5	33.0

The inch size type is not plated.

Tubing

Clean tubing

Processed tubing

PushOne fitting

QuickSeal fitting

Clean fitting/ Chemifit

Bamboo-shoot fitting

Control switch/ Detachable series

Jig/Tool/ Accessory

Technical information

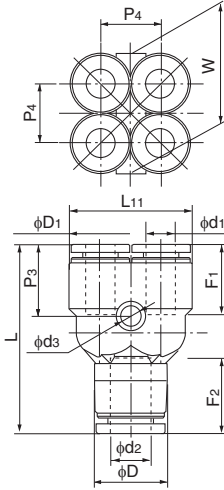
Reference

Double Y union

●Millimeter size type



Product number	d1 Applicable tubing outer diameter (mm)	d2 Applicable tubing outer diameter (mm)	L (mm)	L11 (mm)	F1 Tubing insertion length (mm)	F2 Tubing insertion length (mm)	P3 (mm)	P4 (mm)	W (mm)	D1 (mm)	D (mm)	ds (mm)	Min. inner diameter (mm)	Effective sectional area (mm ²)	Weight (g)
EUWY4-6	4	6	34.2	19.8	13	15	13.4	10.0	19.8	9.8	12.6	3.2	3.5	—	10.0
EUWY6-8	6	8	39.2	24.8	15	16	14.8	12.2	24.8	12.6	14.6	4.2	5.0	—	16.0

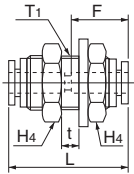


Panel touch connector

●Millimeter size type



Product number	Applicable tubing outer diameter (mm)	L (mm)	F Tubing insertion length (mm)	t Max. panel thickness (mm)	H4 (mm)	T1 Recommended panel hole diameter (mm)	Washer outer diameter (mm)	Washer thickness (mm)	Thread length (mm)	Min. inner diameter (mm)	Effective sectional area (mm ²)	Weight (g)
EPC4	4	31.8	13	8.0	17.0	13	20	2.0	20	3.0	3.5	5.0
EPC6	6	33.6	15	9.5	19.0	15	24	2.5	22	5.0	12.5	7.0
EPC8	8	35.8	16	10.5	22.0	17	28	2.5	23	7.0	28.0	9.0
EPC10	10	41.7	19	14.0	27.0	21	34	3.0	27	9.0	45.0	16.0
EPC12	12	43.6	20	16.0	30.0	23	37	3.0	29	11.0	67.0	67.0

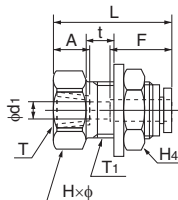


Internal panel touch connector

●Millimeter size type



Product number	Applicable tubing outer diameter (mm)	T Thread size (RC)	L (mm)	A (mm)	F Tubing insertion length (mm)	H×φ Width across flat (mm)	H4 (mm)	t Max. panel thickness (mm)	T1 Recommended panel hole diameter (mm)	d1 (mm)	Washer outer diameter (mm)	Washer thickness (mm)	Min. inner diameter (mm)	Effective sectional area (mm ²)	Weight (g)
EPFC4-PT1/8	4	RC1/8	27.9	8.7	13	17.0×18.5	17.0	8.0	13	3.0	20	2.0	3.0	4.0	22.0
EPFC6-PT1/8	6	RC1/8	29.8	8.7	15	19.0×21.0	19.0	9.0	15	5.0	24	2.5	5.0	10.5	44.0
EPFC6-PT1/4	6	RC1/4	35.3	13.0	15	19.0×21.0	19.0	9.0	15	5.0	24	2.5	5.0	10.5	50.0
EPFC8-PT1/4	8	RC1/4	34.4	13.0	16	22.0×24.5	22.0	10.5	17	7.0	28	2.5	7.0	25.0	64.0
EPFC8-PT3/8	8	RC3/8	38.4	13.5	16	22.0×24.5	22.0	10.5	17	7.0	28	2.5	7.0	26.0	68.0
EPFC10-PT1/4	10	RC1/4	40.4	13.0	19	27.0×30.0	27.0	14.0	21	9.0	34	3.0	9.0	40.0	117.0
EPFC10-PT3/8	10	RC3/8	40.4	13.5	19	27.0×30.0	27.0	14.0	21	9.0	34	3.0	9.0	40.0	107.0
EPFC12-PT1/4	12	RC1/4	42.3	13.0	20	30.0×33.5	30.0	16.0	23	10.5	37	3.0	10.5	45.0	147.0
EPFC12-PT3/8	12	RC3/8	42.3	13.5	20	30.0×33.5	30.0	16.0	23	11.0	37	3.0	11.0	50.0	138.0



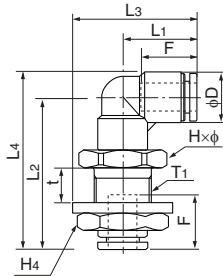
Tubing
Clean tubing
Processed tubing
PushOne fitting
QuickSeal fitting
Clean fitting/ Chemifit
Bamboo-shoot fitting
Control switch/ Detachable series
Jig/Tool/ Accessory
Technical information
Reference

90 degree panel touch elbow

●Millimeter size type



Product number	Applicable tubing outer diameter (mm)	L ₁ (mm)	L ₂ (mm)	L ₃ (mm)	L ₄ (mm)	F Tubing insertion length (mm)	H _{×φ} Width across flat (mm)	H ₄ Width across flat (mm)	t Max. panel thickness (mm)	T ₁ Recommended panel hole diameter (mm)	D (mm)	Washer outer diameter (mm)	Washer thickness (mm)	Min. inner diameter (mm)	Effective sectional area (mm ²)	Weight (g)
EPL4	4	17.2	35.6	27.7	40.5	13	17.0×18.5	17.0	7.5	13	9.8	21	2.5	3.0	—	32.0
EPL6	6	18.5	40.0	30.5	46.3	15	19.0×21.0	19.0	9.0	15	12.6	24	2.5	5.0	—	43.0
EPL8	8	20.7	43.6	34.7	50.9	16	22.0×24.5	22.0	10.0	17	14.6	28	3.0	7.0	—	62.0
EPL10	10	24.7	51.6	41.7	60.3	19	27.0×30.0	27.0	14.0	21	17.5	34	3.0	9.0	—	101.0
EPL12	12	26.3	56.0	44.8	66.0	20	30.0×33.5	30.0	16.0	23	20.0	37	3.0	10.0	—	126.0

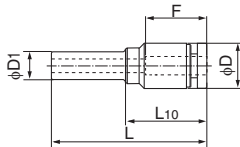


Reducer

●Millimeter size type



Product number	Applicable tubing outer diameter (mm)	D ₁ Insertion part diameter (mm)	L (mm)	L ₁₀ (mm)	F Tubing insertion length (mm)	D (mm)	Min. inner diameter (mm)	Effective sectional area (mm ²)	Weight (g)
ER4-6-Z2	4	6	34.0	17.5	13	9.8	3.0	3.5	3.0
ER4-8-Z2	4	8	31.5	18.5	13	9.8	3.0	3.5	3.0
ER6-8-Z2	6	8	34.3	17.3	15	12.6	5.0	10.5	4.0
ER6-10-Z2	6	10	35.2	20.2	15	12.6	5.0	10.5	4.0
ER6-12-Z2	6	12	36.7	20.9	15	12.6	5.0	10.5	5.0
ER8-10-Z2	8	10	39.0	18.5	16	14.6	7.0	28.0	5.0
ER8-12-Z2	8	12	37.9	15.8	16	14.6	7.0	28.0	5.0
ER10-12-Z2	10	12	42.5	20.5	19	17.5	9.0	45.0	8.0



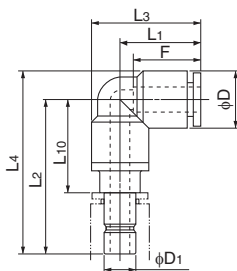
Adapter elbow

●Millimeter size type



Product number	Applicable tubing outer diameter (mm)	D ₁ Insertion part diameter (mm)	L ₁ (mm)	L ₂ (mm)	L ₃ (mm)	L ₄ (mm)	L ₁₀ (mm)	F Tubing insertion length (mm)	D (mm)	Min. inner diameter (mm)	Effective sectional area (mm ²)	Weight (g)
EAL4	4	4	17.2	30.7	22.1	35.6	14.7	13	9.8	3.0	4.0	6.0
EAL6	6	6	18.5	34.2	24.4	40.5	17.7	15	12.6	4.5	12.0	10.0
EAL8	8	8	20.7	35.7	27.6	43.0	18.7	16	14.6	6.0	20.0	14.0
EAL10	10	10	24.7	41.2	33.0	50.0	22.7	19	17.5	8.0	35.0	22.0
EAL12	12	12	26.3	45.2	35.7	55.2	25.2	20	20.0	10.0	43.0	30.0

⚠ Caution: Once an adapter elbow is inserted into a PushOne part, the part cannot be used to connect a tubing.



Tubing

Clean tubing

Processed tubing

PushOne fitting

QuickSeal fitting

Clean fitting/Chemifit

Bamboo-shoot fitting

Control switch/Detachable series

Jig/Tool/Accessory

Technical information

Reference

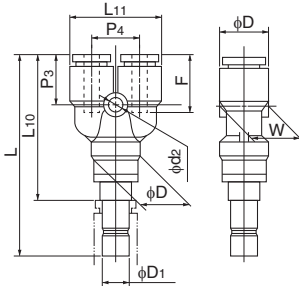
Y plug

●Millimeter size type



Product number	Applicable tubing outer diameter (mm)	D1 Insertion part diameter (mm)	L (mm)	L10 (mm)	L11 (mm)	F Tubing insertion length (mm)	P3 (mm)	P4 (mm)	W (mm)	D (mm)	d2 (mm)	Min. inner diameter (mm)	Effective sectional area (mm ²)	Weight (g)
EYA4-4	4	4	48.4	32.4	20.8	13	13.4	11.0	9.8	9.8	3.2	3.0	3.5	8.0
EYA6-6	6	6	52.8	36.3	24.8	15	14.8	12.2	12.5	12.6	4.2	4.5	9.0	14.0
EYA8-8	8	8	56.4	39.4	28.8	16	16.4	14.2	14.6	14.6	4.2	6.0	18.0	19.0
EYA10-10	10	10	63.9	45.4	35.0	19	18.4	17.5	17.5	17.5	4.2	8.0	28.0	31.0
EYA12-12	12	12	70.3	50.3	40.0	20	20.3	20.0	20.0	20.0	4.2	10.0	40.0	42.0

⚠ Caution: Once a Y plug elbow is inserted into a PushOne part, the part cannot be used to connect a tubing.

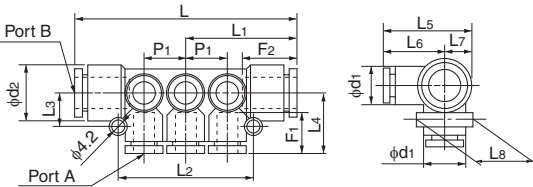


Manifold A type

●Millimeter size type



Product number	Applicable tubing outer diameter (mm)		A Number of ports	L (mm)	L1 (mm)	L2 (mm)	L3 (mm)	L4 (mm)	L5 (mm)	L6 (mm)	L7 (mm)	L8 (mm)	F1 Tubing insertion length (mm)	F2 Tubing insertion length (mm)	P1 (mm)	d1 (mm)	d2 (mm)	Effective sectional area (mm ²)	Weight (g)
	Port A	Port B																	
EMA4-8-6	4	8	6	62.8	31.4	36.0	10.0	19.5	28.8	19.5	9.3	18.5	13	16	10.6	9.8	14.6	—	20.0
EMA4-8-10	4	8	10	84.3	42.2	57.2	10.0	19.8	29.1	19.8	9.3	18.5	13	16	10.6	9.8	14.6	—	33.0
EMA6-10-6	6	10	6	74.7	37.4	44.0	11.5	20.8	30.1	20.8	9.3	18.5	15	19	13.0	12.6	17.5	—	37.0
EMA6-10-10	6	10	10	100.7	50.4	70.0	11.5	21.1	30.4	21.1	9.3	18.5	15	19	13.0	12.6	17.5	—	54.0
EMA8-12-6	8	12	6	84.2	42.1	51.0	12.5	23.0	33.5	23.0	10.5	21.0	16	20	15.5	14.6	20.0	—	50.0
EMA8-12-10	8	12	10	115.1	57.6	82.0	12.5	23.0	33.5	23.0	10.5	21.0	16	20	15.5	14.6	20.0	—	68.0

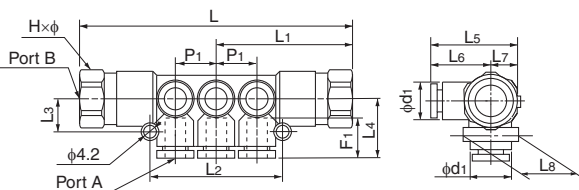


Manifold B type

●Millimeter size type

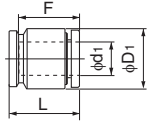


Product number	Applicable tubing outer diameter (mm)		Thread size (RC)	A Number of ports	L (mm)	L1 (mm)	L2 (mm)	L3 (mm)	L4 (mm)	L5 (mm)	L6 (mm)	L7 (mm)	L8 (mm)	F1 Tubing insertion length (mm)	P1 (mm)	d1 (mm)	H×φ Width across flat (mm)	Effective sectional area (mm ²)	Weight (g)
	Port A	Port B																	
EMB4-1/4-6	4	RC1/4	6	84.0	42.0	36.0	10.0	19.5	28.8	19.5	9.3	18.5	13	10.6	9.8	17.0x18.5	—	58.0	
EMB4-1/4-10	4	RC1/4	10	105.5	52.8	57.2	10.0	19.8	29.1	19.8	9.3	18.5	13	10.6	9.8	17.0x18.5	—	67.0	
EMB6-1/4-6	6	RC1/4	6	96.0	48.0	44.0	11.5	20.8	30.1	20.8	9.3	18.5	15	13.0	12.6	17.0x18.5	—	79.0	
EMB6-1/4-10	6	RC1/4	10	122.0	61.0	70.0	11.5	21.1	30.4	21.1	9.3	18.5	15	13.0	12.6	17.0x18.5	—	96.0	
EMB8-3/8-6	8	RC3/8	6	105.6	52.8	51.0	12.5	23.0	33.5	23.0	10.5	21.0	16	15.5	14.6	19.0x21.0	—	92.0	
EMB8-3/8-10	8	RC3/8	10	136.5	68.3	82.0	12.5	23.0	33.5	23.0	10.5	21.0	16	15.5	14.6	19.0x21.0	—	117.0	



Tubing
Clean tubing
Processed tubing
PushOne fitting
QuickSeal fitting
Clean fitting/Chemifit
Bamboo-shoot fitting
Control switch/Detachable series
Jig/Tool/Accessory
Technical information
Reference

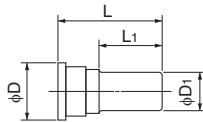
Tubing cap



●Millimeter size type

Product number	d ₁ Applicable tubing outer diameter (mm)	D ₁ (mm)	F Tubing insertion length (mm)	L (mm)	Weight (g)
ECC4	4	9.8	13	15.0	2.0
ECC6	6	12.6	15	16.9	3.0
ECC8	8	14.6	16	17.9	4.0
ECC10	10	17.5	19	21.7	6.0
ECC12	12	20.0	20	22.6	8.0

Blank plug



●Millimeter size type

Product number	D ₁ Insertion part diameter (mm)	L (mm)	L ₁ (mm)	D (mm)	Weight (g)
BC3	3	22.0	11.5	5.0	0.5
BC4	4	28.0	15.5	7.7	0.8
BC6	6	28.0	16.0	9.7	1.2
BC8	8	29.0	16.0	11.7	1.7
BC10	10	32.0	17.7	14.0	2.5
BC12	12	34.0	20.4	16.0	3.8

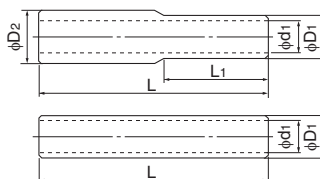
●Inch size type

Product number	D ₁ Insertion part diameter (inch)	L (mm)	L ₁ (mm)	D (mm)	Weight (g)
BC1/4	1/4	28.0	16.0	9.7	1.2
BC3/8	3/8	32.0	17.7	14.0	2.5
BC1/2	1/2	34.0	20.4	16.0	3.8

⚠ Caution: Material: POM (Not flame-retardant resin)

📏 Size 5/16 is shared with BC8.

Nipple



●Millimeter size type

Product number	D ₁ Insertion part diameter (mm)	D ₂ Insertion part diameter (mm)	d ₁ (mm)	L (mm)	L ₁ (mm)	Weight (g)
EN4	4	—	2.5	37.0	—	1.0
EN4-6	4	6	2.5	38.0	18.5	1.0
EN6	6	—	4.0	39.0	—	1.0
EN6-8	6	8	4.0	41.0	19.5	1.0
EN8	8	—	6.0	43.0	—	1.0
EN8-10	8	10	6.0	46.0	21.5	2.0
EN10	10	—	7.5	49.0	—	2.0
EN10-12	10	12	7.5	50.5	24.5	3.0
EN12	12	—	9.0	52.0	—	3.0

⚠ Caution: Material: POM (Not flame-retardant resin)

Tubing

Clean tubing

Processed tubing

PushOne fitting

QuickSeal fitting

Clean fitting/Chemifit

Bamboo-shoot fitting

Control switch/Detachable series

Jig/Tool/Accessory

Technical information

Reference