

# PushOne™ A Series Mini Type

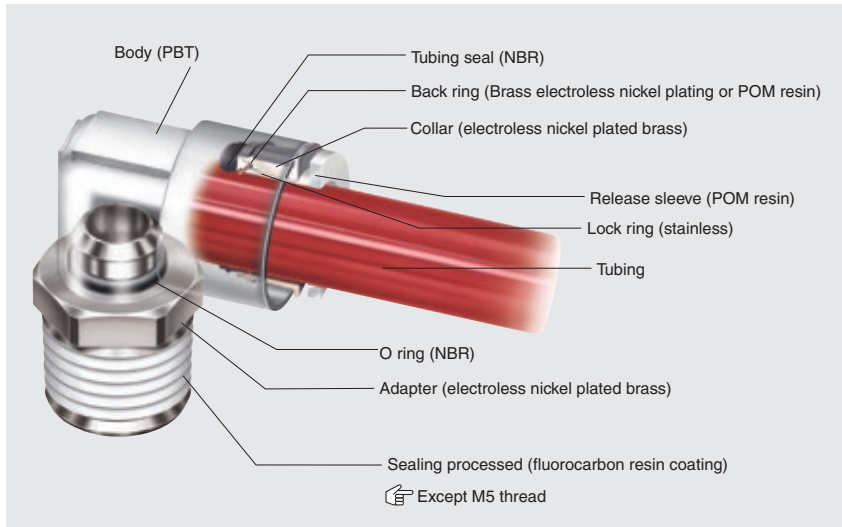
PushOne™ fittings for general air pressure

## Features

- **PushOne connection of tubing**  
The tubes can be connected without using a jig or tools.
- **Electroless nickel plated**  
Prevents degradation of surface and dissolution of copper ions into fluid.
- **Compact body**  
Suitable for narrow piping or compact design equipment.
- **Sealing-processed R thread**  
Sealing tape is not required.



## Cross-sectional structure diagram



## Operating fluid, working temperature range

Operating fluid	Working temperature range
Air	-20°C~+80°C

See "Combination List of Tubing and Fitting" on page 8.

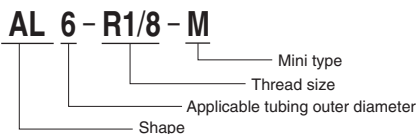
## Pressure condition

**Maximum working pressure:** 1.0MPa  
**Negative pressure performance:** -99.975kPa

## Handling instructions

- ⚠ Caution: When the working conditions of tubes and fittings differ, use them under the lower specified conditions.
  - ⚠ Caution: Do not bend the pipe sharply near the tubing insertion port of the fitting. Keep the tubing straight for twice as long as the tubing diameter from the insertion port.
- See page 34 for the common handling instructions for fittings.

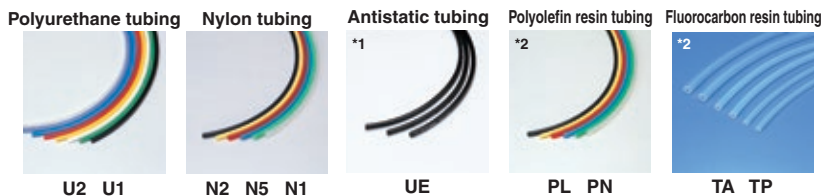
## Product number example



## Size comparison of mini types

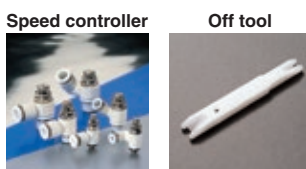


## Applicable tubing



- (\*1) When the PushOne E series of the Mini type is used with a UE tubing, choose a metal body type including a connector and a hexagonal socket to maintain conductivity between the tubing and the fittings.
- (\*2) Combinatory use of PL, PN, TA or TP tubing and PushOne E series of the Mini type mixes general and clean type performances. When using them together in a clean environment, be aware of how this could lower the cleanliness level.

## Related products and product introduction



## Reference

Instruction manual .....P.170  
Effective sectional area ..P.168  
Negative-pressure performance list .....P.169

Tubing

Clean tubing

Processed tubing

PushOne fitting

QuickSeal fitting

Clean fitting/Chemifit

Bamboo-shoot fitting

Control switch/Detachable series

Jig/Tool/Accessory

Technical information

Reference

# PushOne™A Series Mini Type

## Shape list

<p><b>Connector</b> AC*-M</p> 	<p><b>Hexagon socket connector</b> AC*-A-M</p> 	<p><b>90 degree elbow</b> AL*-M</p> 	<p><b>90 degree long elbow</b> ALL*-M</p> 	<p><b>Tee</b> AT*-M</p> 
<p><b>Service tee</b> AST*-M</p> 	<p><b>Y joint</b> AY*-M</p> 	<p><b>Union connector</b> AUC*-M</p> 	<p><b>90 degree union elbow</b> AUL*-M</p> 	<p><b>Union tee</b> AUT*-M</p> 
<p><b>Y union</b> AYB*-M</p> 	<p><b>Blank plug</b> BC</p> 	<p><b>Nipple</b> EN</p> 		

“PushOne E series mini type,” which has been favored by our customers for many years, was discontinued as of August 2014. Please ask for the white body “PushOne A Series mini type” from now on.

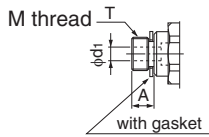
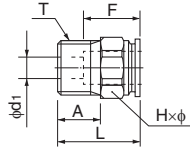
- Tubing
- Clean tubing
- Processed tubing
- PushOne fitting**
- QuickSeal fitting
- Clean fitting/Chemifit
- Bamboo-shoot fitting
- Control switch/Detachable series
- Jig/Tool/Accessory
- Technical information
- Reference

Connector



●Millimeter size type

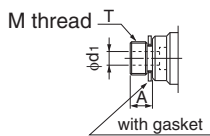
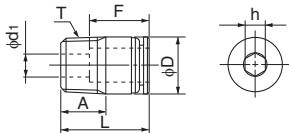
Product number	Applicable tubing outer diameter (mm)	T Thread size (M,R)	L (mm)	A (mm)	F Tubing insertion length (mm)	H×φ Width across flat (mm)	d <sub>1</sub> Min. inner diameter (mm)	Effective sectional area (mm <sup>2</sup> )	Weight (g)
AC3-M3-M	3	M3×0.5	14.9	3.0	11.0	5.5×6.0	1.5	2.0	1.3
AC3-M5-M	3	M5×0.8	15.9	3.5	11.0	7.0×7.7	2.0	2.5	3.1
AC4-M3-M	4	M3×0.5	15.9	3.0	11.5	8.0×8.8	1.5	2.0	2.9
AC4-M5-M	4	M5×0.8	15.9	3.5	11.5	8.0×8.8	2.5	3.5	3.1
AC4-R1/8-M	4	R1/8	15.7	7.3	11.5	10.0×11.0	2.5	4.0	6.1
AC6-M5-M	6	M5×0.8	17.0	3.5	12.5	10.0×11.0	2.5	4.5	4.1
AC6-R1/8-M	6	R1/8	18.5	7.3	12.5	10.0×11.0	4.0	9.0	6.3



Hexagon socket connector

●Millimeter size type

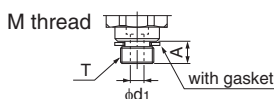
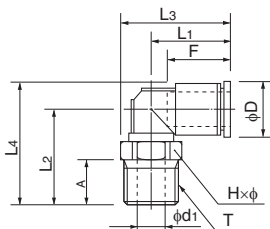
Product number	Applicable tubing outer diameter (mm)	T Thread size (M,R)	L (mm)	A (mm)	F Tubing insertion length (mm)	h Width across flat (mm)	D (mm)	d <sub>1</sub> Min. inner diameter (mm)	Effective sectional area (mm <sup>2</sup> )	Weight (g)
AC3-M3A-M	3	M3×0.5	14.9	3.0	11.0	1.5	5.6	1.5	2.0	1.2
AC3-M5A-M	3	M5×0.8	15.9	3.5	11.0	2.0	6.8	2.0	2.5	2.9
AC4-M3A-M	4	M3×0.5	15.9	3.0	11.5	1.5	8.0	1.5	2.0	2.5
AC4-M5A-M	4	M5×0.8	15.9	3.5	11.5	2.5	8.0	2.5	3.5	2.8
AC4-R1/8A-M	4	R1/8	15.7	7.3	11.5	2.5	10.0	2.5	4.0	5.8
AC6-M5A-M	6	M5×0.8	17.0	3.5	12.5	2.5	9.8	2.5	4.5	3.6
AC6-R1/8A-M	6	R1/8	18.5	7.3	12.5	4.0	10.0	4.0	9.0	5.7



90 degree elbow

●Millimeter size type

Product number	Applicable tubing outer diameter (mm)	T Thread size (M,R)	L <sub>1</sub> (mm)	L <sub>2</sub> (mm)	L <sub>3</sub> (mm)	L <sub>4</sub> (mm)	A (mm)	F Tubing insertion length (mm)	H×φ Width across flat (mm)	D (mm)	d <sub>1</sub> (mm)	Min. inner diameter (mm)	Effective sectional area (mm <sup>2</sup> )	Weight (g)
AL3-M3-M	3	M3×0.5	12.6	12.0	15.6	15.2	3.0	11.0	5.5×6.0	6.3	1.5	1.5	1.5	1.6
AL3-M5-M	3	M5×0.8	12.6	13.0	16.4	16.2	3.5	11.0	7.0×7.7	6.3	2.5	1.5	1.5	2.2
AL4-M3-M	4	M3×0.5	14.4	12.5	18.8	16.5	3.0	11.5	8.0×8.8	8.0	1.5	1.5	2.0	2.6
AL4-M5-M	4	M5×0.8	14.4	13.0	18.8	17.0	3.5	11.5	8.0×8.8	8.0	2.5	2.5	3.5	3.2
AL4-R1/8-M	4	R1/8	14.4	16.0	19.9	20.0	8.0	11.5	10.0×11.0	8.0	5.0	3.0	4.0	6.1
AL6-M5-M	6	M5×0.8	15.6	14.0	20.0	19.0	3.5	12.5	8.0×8.8	10.0	2.5	2.5	4.5	3.6
AL6-R1/8-M	6	R1/8	15.6	17.0	21.1	22.0	8.0	12.5	10.0×11.0	10.0	5.0	4.0	8.0	6.5



Tubing

Clean tubing

Processed tubing

PushOne fitting

QuickSeal fitting

Clean fitting/ Chemifit

Bamboo-shoot fitting

Control switch/ Detachable series

Jig/Tool/ Accessory

Technical information

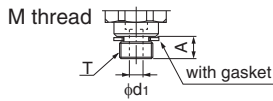
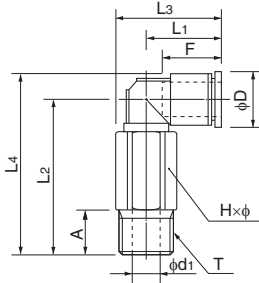
Reference

## 90 degree long elbow

### ●Millimeter size type



Product number	Applicable tubing outer diameter (mm)	T Thread size (M,R)	L1 (mm)	L2 (mm)	L3 (mm)	L4 (mm)	A (mm)	F Tubing insertion length (mm)	H×φ Width across flat (mm)	D (mm)	d1 (mm)	Min. inner diameter (mm)	Effective sectional area (mm <sup>2</sup> )	Weight (g)
ALL3-M3-M	3	M3×0.5	12.6	20.0	15.6	23.2	3.0	11.0	5.5×6.0	6.3	1.5	1.5	1.5	3.4
ALL3-M5-M	3	M5×0.8	12.6	21.0	16.4	24.2	3.5	11.0	7.0×7.7	6.3	2.5	1.5	1.5	4.5
ALL4-M3-M	4	M3×0.5	14.4	24.5	18.8	28.5	3.0	11.5	8.0×8.8	8.0	1.5	1.5	2.0	6.8
ALL4-M5-M	4	M5×0.8	14.4	25.0	18.8	29.0	3.5	11.5	8.0×8.8	8.0	2.5	2.5	3.5	7.4
ALL4-R1/8-M	4	R1/8	14.4	28.0	19.9	32.0	8.0	11.5	10.0×11.0	8.0	5.0	3.0	4.0	12.7
ALL6-M5-M	6	M5×0.8	15.6	26.0	20.0	31.0	3.5	12.5	8.0×8.8	10.0	2.5	2.5	4.5	7.8
ALL6-R1/8-M	6	R1/8	15.6	29.0	21.1	34.0	8.0	12.5	10.0×11.0	10.0	5.0	4.0	8.0	13.1

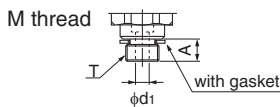
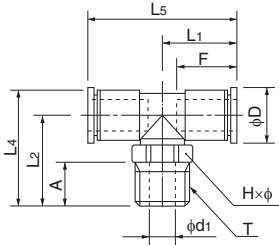


## Tee

### ●Millimeter size type



Product number	Applicable tubing outer diameter (mm)	T Thread size (M,R)	L1 (mm)	L2 (mm)	L4 (mm)	L5 (mm)	A (mm)	F Tubing insertion length (mm)	H×φ Width across flat (mm)	D (mm)	d1 (mm)	Min. inner diameter (mm)	Effective sectional area (mm <sup>2</sup> )	Weight (g)
AT3-M3-M	3	M3×0.5	12.6	12.0	15.2	25.1	3.0	11.0	5.5×6.0	6.3	1.5	1.5	1.5	2.1
AT3-M5-M	3	M5×0.8	12.6	13.0	16.2	25.1	3.5	11.0	7.0×7.7	6.3	2.5	1.5	1.5	2.7
AT4-M3-M	4	M3×0.5	14.9	12.5	16.5	29.8	3.0	11.5	8.0×8.8	8.0	1.5	1.5	2.0	3.5
AT4-M5-M	4	M5×0.8	14.9	13.0	17.0	29.8	3.5	11.5	8.0×8.8	8.0	2.5	2.5	3.5	4.1
AT4-R1/8-M	4	R1/8	14.9	16.0	20.0	29.8	8.0	11.5	10.0×11.0	8.0	5.0	3.0	4.0	7.0
AT6-M5-M	6	M5×0.8	16.1	14.0	19.0	32.1	3.5	12.5	8.0×8.8	10.0	2.5	2.5	4.5	4.8
AT6-R1/8-M	6	R1/8	16.1	17.0	22.0	32.1	8.0	12.5	10.0×11.0	10.0	5.0	4.0	8.0	7.7

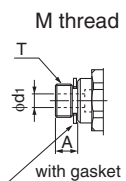
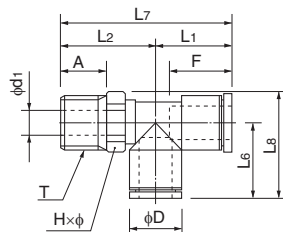


## Service tee

### ●Millimeter size type



Product number	Applicable tubing outer diameter (mm)	T Thread size (M,R)	L1 (mm)	L2 (mm)	L6 (mm)	L7 (mm)	L8 (mm)	A (mm)	F Tubing insertion length (mm)	H×φ Width across flat (mm)	D (mm)	d1 (mm)	Min. inner diameter (mm)	Effective sectional area (mm <sup>2</sup> )	Weight (g)
AST3-M3-M	3	M3×0.5	12.6	12.0	12.6	24.6	15.7	3.0	11.0	5.5×6.0	6.3	1.5	1.5	1.5	2.1
AST3-M5-M	3	M5×0.8	12.6	13.0	12.6	25.6	16.4	3.5	11.0	7.0×7.7	6.3	2.5	1.5	1.5	2.7
AST4-M3-M	4	M3×0.5	14.9	12.5	14.9	27.4	19.3	3.0	11.5	8.0×8.8	8.0	1.5	1.5	2.0	3.5
AST4-M5-M	4	M5×0.8	14.9	13.0	14.9	27.9	19.3	3.5	11.5	8.0×8.8	8.0	2.5	2.5	3.5	4.1
AST4-R1/8-M	4	R1/8	14.9	16.0	14.9	30.9	20.4	8.0	11.5	10.0×11.0	8.0	5.0	3.0	4.0	7.0
AST6-M5-M	6	M5×0.8	16.1	14.0	16.1	30.1	21.1	3.5	12.5	8.0×8.8	10.0	2.5	2.5	4.5	4.8
AST6-R1/8-M	6	R1/8	16.1	17.0	16.1	33.1	21.6	8.0	12.5	10.0×11.0	10.0	5.0	4.0	8.0	7.7

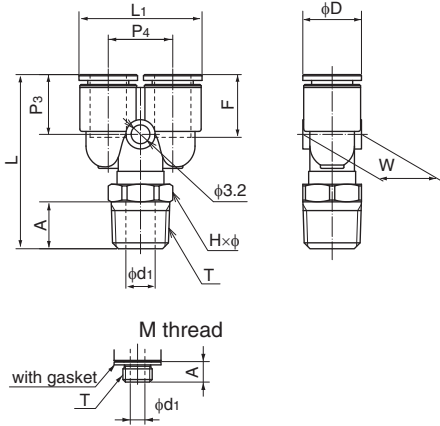


Y joint

●Millimeter size type



Product number	Applicable tubing outer diameter (mm)	T Thread size (M,R)	L (mm)	L <sub>1</sub> (mm)	A (mm)	F Tubing insertion length (mm)	H×φ Width across flat (mm)	P <sub>3</sub> (mm)	P <sub>4</sub> (mm)	W (mm)	D (mm)	d <sub>1</sub> (mm)	Min. inner diameter (mm)	Effective sectional area (mm <sup>2</sup> )	Weight (g)
AY4-M3-M	4	M3×0.5	26.6	17.0	3.0	11.5	8.0×8.8	11.4	9.0	8.0	8.0	1.5	1.5	1.5	3.7
AY4-M5-M	4	M5×0.8	27.1	17.0	3.5	11.5	8.0×8.8	11.4	9.0	8.0	8.0	2.5	2.5	2.5	4.3
AY4-R1/8-M	4	R1/8	30.1	17.0	8.0	11.5	10.0×11.0	11.4	9.0	8.0	8.0	5.0	3.0	2.5	7.2
AY6-M5-M	6	M5×0.8	28.6	21.0	3.5	12.5	8.0×8.8	12.1	11.0	10.0	10.0	2.5	2.5	4.0	5.0
AY6-R1/8-M	6	R1/8	31.6	21.0	8.0	12.5	10.0×11.0	12.1	11.0	10.0	10.0	5.0	4.0	5.0	7.9

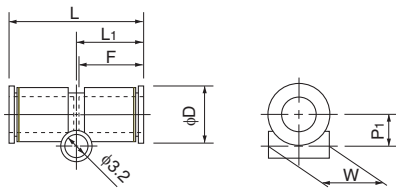


Union connector

●Millimeter size type



Product number	Applicable tubing outer diameter (mm)	L (mm)	L <sub>1</sub> (mm)	P <sub>1</sub> (mm)	F Tubing insertion length (mm)	D (mm)	W (mm)	Min. inner diameter (mm)	Effective sectional area (mm <sup>2</sup> )	Weight (g)
AUC3-M	3	23.2	11.6	3.6	11.0	6.3	6.0	2.0	2.5	1.1
AUC4-M	4	25.3	12.7	4.5	11.5	8.0	8.0	3.0	4.0	1.8
AUC6-M	6	26.6	13.3	5.4	12.5	10.0	10.0	4.0	8.5	2.5

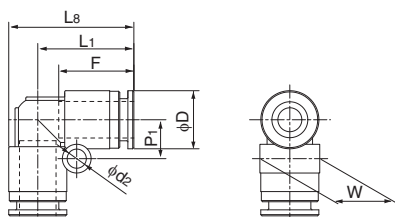


90 degree union elbow

●Millimeter size type

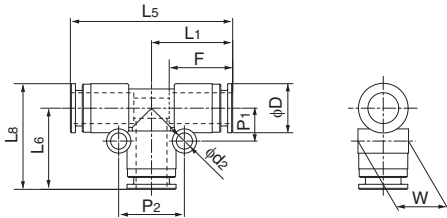


Product number	Applicable tubing outer diameter (mm)	L <sub>1</sub> (mm)	L <sub>8</sub> (mm)	P <sub>1</sub> (mm)	F Tubing insertion length (mm)	D (mm)	d <sub>2</sub> (mm)	W (mm)	Min. inner diameter (mm)	Effective sectional area (mm <sup>2</sup> )	Weight (g)
AUL3-M	3	12.6	15.7	4.1	11.0	6.3	3.1	6.0	2.0	2.0	1.1
AUL4-M	4	14.9	18.9	5.0	11.5	8.0	3.2	8.0	3.0	3.5	2.0
AUL6-M	6	16.1	21.1	6.5	12.5	10.0	3.2	10.0	4.0	8.0	2.7



Tubing  
Clean tubing  
Processed tubing  
PushOne fitting  
QuickSeal fitting  
Clean fitting/ Chemifit  
Bamboo-shoot fitting  
Control switch/ Detachable series  
Jig/Tool/ Accessory  
Technical information  
Reference

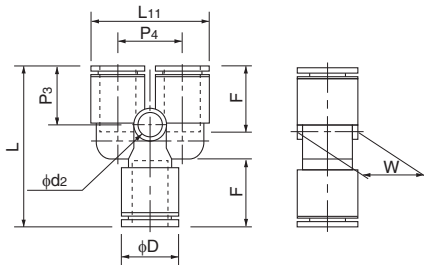
## Union tee



### ●Millimeter size type

Product number	Applicable tubing outer diameter (mm)	L1 (mm)	L5 (mm)	L6 (mm)	L8 (mm)	P1 (mm)	P2 (mm)	F Tubing insertion length (mm)	D (mm)	d2 (mm)	W (mm)	Min. inner diameter (mm)	Effective sectional area (mm <sup>2</sup> )	Weight (g)
AUT3-M	3	12.6	25.1	12.6	15.7	4.1	8.2	11.0	6.3	3.2	6.0	2.0	2.0	1.7
AUT4-M	4	14.9	29.8	14.9	18.9	5.0	10.0	11.5	8.0	3.2	8.0	3.0	3.5	3.0
AUT6-M	6	16.1	32.1	16.1	21.1	6.5	13.0	12.5	10.0	3.2	10.0	4.0	8.0	3.9

## Y union



### ●Millimeter size type

Product number	Applicable tubing outer diameter (mm)	L (mm)	L11 (mm)	F Tubing insertion length (mm)	P3 (mm)	P4 (mm)	W (mm)	D (mm)	d2 (mm)	Min. inner diameter (mm)	Effective sectional area (mm <sup>2</sup> )	Weight (g)
AYB3-M	3	25.7	13.3	11.0	10.9	7.0	6.0	6.3	2.0	2.0	2.0	1.8
AYB4-M	4	28.8	17.0	11.5	11.4	9.0	8.0	8.0	3.2	3.0	2.0	3.1
AYB6-M	6	31.1	21.0	12.5	12.1	11.0	10.0	10.0	3.2	4.0	8.0	4.0

## Blank plug



See the PushOne E series (P.71) for the product number and part sizes.

## Nipple



See the PushOne E series (P.71) for the product number and part sizes.