

PushOne™ A Series

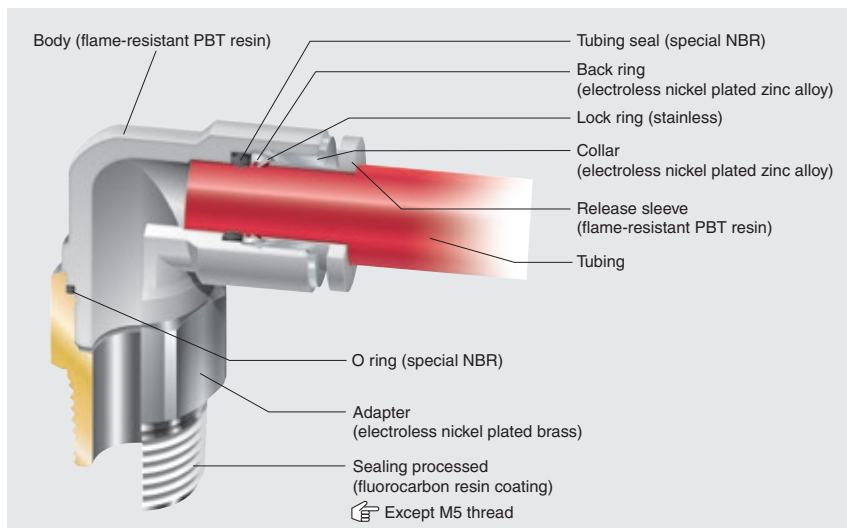
PushOne™ fittings for general air pressure (flame-resistant)

Features

- **PushOne™ connection of tubing**
The tubes can be connected without using a jig or tools.
- **Electroless nickel plated**
Prevents degradation of surface and dissolution of copper ions in fluid.
- **White body illuminative to working environment**
- **Flame-resistant resin (compliant with V-0 of UL94 standard)**
Made of flame-resistant resin PBT. High self-extinguishing performance is compliant with V-0 of UL94 standard. Usable under an environment with spatters.
- **Sealing-processed R thread**
Sealing tape is not required.



Cross-sectional structure diagram



Operating fluid, working temperature range

Operating fluid	Working temperature range
Air	-20°C~+80°C
Water	0°C~+40°C

See "Combination List of Tubing and Fitting" on page 8.

Pressure condition

Maximum working pressure: 1.0MPa
Negative pressure performance: -99.975kPa

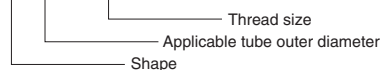
Handling instructions

- ⚠ Caution: When the working conditions of tubes and fittings differ, use them under the lower specified conditions.
- ⚠ Caution: When water is used as the operating fluid, confirm that there is no water leakage damage to equipment and instruments due to construction failure.
- ⚠ Caution: When water is used as the operating fluid, do not allow it to freeze.
- ⚠ Caution: Do not bend the pipe sharply near the tubing insertion port of the fitting. Keep the tubing straight for twice as long as the tubing diameter from the insertion port.

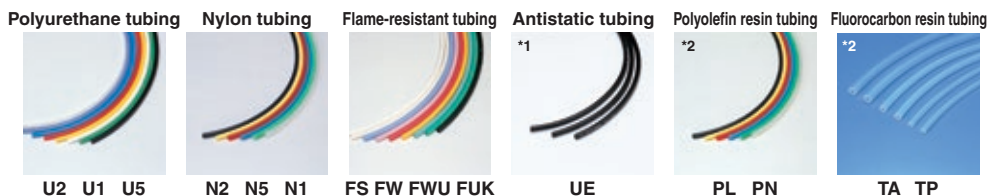
See page 34 for the common handling instructions for fittings.

Product number example

AL 6 - R1/8



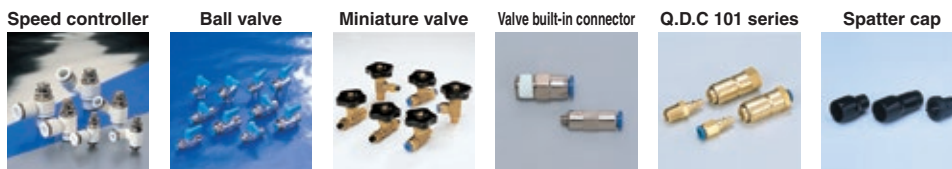
Applicable tubing



(*1) When the PushOne A series is used with a UE tubing, choose a metal body type including a connector and a hexagonal socket to maintain conductivity between the tubing and the fittings.

(*2) Combinatory use of PL, PN, TA or TP tubing and PushOne A series mixes general and clean type performances. When using them together in a clean environment, be aware of how this could lower the cleanliness level.

Related products and product introduction

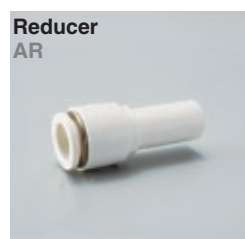


Reference

Instruction manualP.170
UL-94 standard flame testP.195
Effective sectional area ..P.168
Negative-pressure performance listP.169

PushOne™ A Series

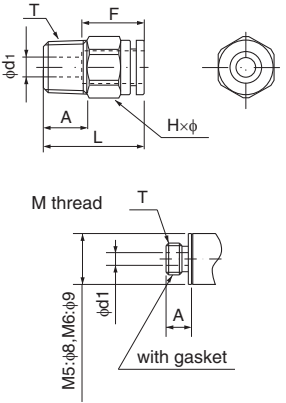
Shape list



- Tubing
- Clean tubing
- Processed tubing
- PushOne fitting**
- QuickSeal fitting
- Clean fitting/Chemifit
- Bamboo-shoot fitting
- Control switch/Detachable series
- Jig/Tool/Accessory
- Technical information
- Reference

Connector

●Millimeter size type

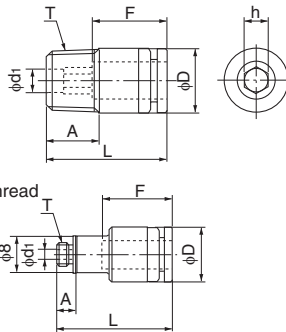


Product number	Applicable tubing outer diameter (mm)	T Thread size (M,R)	L (mm)	A (mm)	F Tubing insertion length (mm)	H×φ Width across flat (mm)	d ₁ (mm)	Effective sectional area (mm ²)	Weight (g)
AC4-M5	4	M5×0.8	22.4	4.0	13	10.0×11.0	2.0	3.0	6.0
AC4-R1/8	4	R1/8	19.4	8.0	13	10.0×11.0	2.5	4.0	7.0
AC4-R1/4	4	R1/4	22.4	11.0	13	14.0×15.4	2.5	4.0	17.0
AC6-M5	6	M5×0.8	24.2	4.0	15	12.0×13.0	2.0	3.5	9.0
AC6-M6	6	M6×1.0	25.2	5.0	15	12.0×13.0	3.0	4.5	10.0
AC6-R1/8	6	R1/8	21.2	8.0	15	12.0×13.0	4.0	10.5	9.0
AC6-R1/4	6	R1/4	24.2	11.0	15	14.0×15.4	4.0	10.5	18.0
AC6-R3/8	6	R3/8	25.2	12.0	15	17.0×18.5	4.0	10.5	32.0
AC8-R1/8	8	R1/8	26.2	8.0	16	14.0×15.4	5.0	20.0	14.0
AC8-R1/4	8	R1/4	25.2	11.0	16	14.0×15.4	6.0	25.0	16.0
AC8-R3/8	8	R3/8	26.2	12.0	16	17.0×18.5	6.0	26.0	29.0
AC10-R1/8	10	R1/8	30.1	8.0	19	17.0×18.5	5.0	25.0	24.0
AC10-R1/4	10	R1/4	28.1	11.0	19	17.0×18.5	8.0	40.0	21.0
AC10-R3/8	10	R3/8	29.1	12.0	19	17.0×18.5	8.0	40.0	29.0
AC10-R1/2	10	R1/2	32.1	15.0	19	22.0×24.5	8.0	40.0	61.0
AC12-R1/4	12	R1/4	34.0	11.0	20	19.0×21.0	8.0	45.0	32.0
AC12-R3/8	12	R3/8	30.0	12.0	20	19.0×21.0	10.0	50.0	31.0
AC12-R1/2	12	R1/2	33.0	15.0	20	22.0×24.5	10.0	50.0	58.0
AC16-R3/8	16	R3/8	41.6	12.0	27	24.0×26.5	10.0	77.0	68.0
AC16-R1/2	16	R1/2	43.6	15.0	27	24.0×26.5	12.0	110.5	83.0

*Made to order

Hexagon socket connector

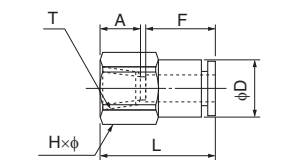
●Millimeter size type



Product number	Applicable tubing outer diameter (mm)	T Thread size (M,R)	L (mm)	A (mm)	F Tubing insertion length (mm)	h Width across flat (mm)	D (mm)	d ₁ (mm)	Effective sectional area (mm ²)	Weight (g)
AC4-M5A	4	M5×0.8	19.4	4.0	13	2.0	9.8	2.0	—	5.0
AC4-R1/8A	4	R1/8	19.4	8.0	13	2.5	9.8	2.5	—	7.0
AC6-M5A	6	M5×0.8	24.2	4.0	15	4.0	11.8	2.0	—	18.0
AC6-R1/8A	6	R1/8	21.2	8.0	15	4.0	11.8	4.0	—	8.0
AC6-R1/4A	6	R1/4	24.2	11.0	15	4.0	13.8	4.0	—	17.0
AC8-R1/8A	8	R1/8	26.2	8.0	16	5.0	13.8	5.0	—	12.0
AC8-R1/4A	8	R1/4	25.2	11.0	16	5.0	13.8	5.0	—	15.0
AC10-R1/4A	10	R1/4	28.1	11.0	19	6.0	16.8	6.0	—	19.0
AC10-R3/8A	10	R3/8	29.1	12.0	19	6.0	16.8	6.0	—	28.0

Internal connector

●Millimeter size type



Product number	Applicable tubing outer diameter (mm)	T Thread size (RC)	L (mm)	A (mm)	F Tubing insertion length (mm)	H×φ Width across flat (mm)	D (mm)	Min. inner diameter (mm)	Effective sectional area (mm ²)	Weight (g)
AFC4-R1/8	4	RC1/8	23.9	8.7	13	14.0×15.4	10.0	3.0	4.0	16.0
AFC6-R1/8	6	RC1/8	24.8	8.7	15	14.0×15.4	12.0	5.0	10.5	17.0
AFC6-R1/4	6	RC1/4	29.3	13.0	15	17.0×18.5	12.0	5.0	10.5	26.0
AFC8-R1/4	8	RC1/4	30.9	13.0	16	17.0×18.5	13.9	7.0	25.0	28.0
AFC8-R3/8	8	RC3/8	31.4	13.5	16	22.0×24.5	13.9	7.0	26.0	45.0
AFC10-R1/4	10	RC1/4	33.9	13.0	19	17.0×18.5	16.9	9.0	40.0	34.0
AFC10-R3/8	10	RC3/8	34.4	13.5	19	22.0×24.5	16.9	9.0	40.0	50.0
AFC10-R1/2	10	RC1/2	38.4	17.5	19	24.0×26.5	16.9	9.0	40.0	56.0
AFC12-R1/4	12	RC1/4	34.8	13.0	20	19.0×21.0	19.0	10.0	45.0	43.0
AFC12-R3/8	12	RC3/8	35.3	13.5	20	22.0×24.5	19.0	11.0	50.0	50.0
AFC12-R1/2	12	RC1/2	39.3	17.5	20	24.0×26.5	19.0	11.0	50.0	58.0

Tubing

Clean tubing

Processed tubing

PushOne fitting

QuickSeal fitting

Clean fitting/ Chemifit

Bamboo-shoot fitting

Control switch/ Detachable series

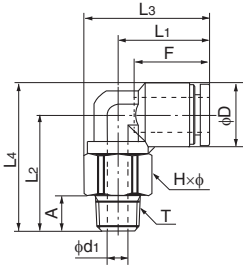
Jig/Tool/ Accessory

Technical information

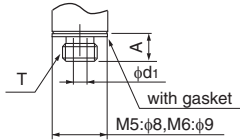
Reference

90 degree elbow

●Millimeter size type



M thread

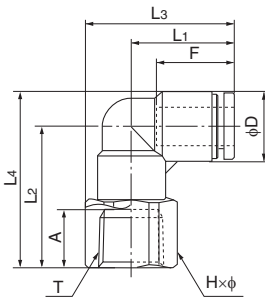


Product number	Applicable tubing outer diameter (mm)	T Thread size (M,R)	L ₁ (mm)	L ₂ (mm)	L ₃ (mm)	L ₄ (mm)	A (mm)	F Tubing insertion length (mm)	H×φ Width across flat (mm)	D (mm)	d ₁ (mm)	Min. inner diameter (mm)	Effective sectional area (mm ²)	Weight (g)
AL4-M5-Z2	4	M5×0.8	17.2	18.3	22.7	23.2	4.0	13	10.0×11.0	9.8	2.0	2.0	3.0	6.0
AL4-R1/8-Z2	4	R1/8	17.2	22.7	22.7	27.6	8.0	13	10.0×11.0	9.8	5.0	3.0	4.0	10.0
AL4-R1/4-Z2	4	R1/4	17.2	24.4	24.9	29.3	12.0	13	14.0×15.4	9.8	5.0	3.0	4.0	19.0
AL6-M5-Z2	6	M5×0.8	18.5	22.2	25.0	28.5	4.0	15	12.0×13.0	12.6	2.0	2.0	3.5	10.0
AL6-M6	6	M6×1.0	18.5	22.7	25.0	29.0	5.0	15	12.0×13.0	12.6	3.0	3.0	4.5	11.0
AL6-R1/8-Z2	6	R1/8	18.5	25.2	25.0	31.5	8.0	15	12.0×13.0	12.6	5.0	5.0	12.0	12.0
AL6-R1/4-Z2	6	R1/4	18.5	25.8	26.2	32.1	12.0	15	14.0×15.4	12.6	7.0	5.0	12.0	17.0
AL6-R3/8-Z2	6	R3/8	18.5	26.8	27.8	33.1	12.0	15	17.0×18.5	12.6	11.0	5.0	12.0	27.0
AL8-R1/8-Z2	8	R1/8	20.7	26.2	28.4	33.5	8.0	16	14.0×15.4	14.6	5.0	5.0	18.5	16.0
AL8-R1/4-Z2	8	R1/4	20.7	30.2	28.4	37.5	12.0	16	14.0×15.4	14.6	8.0	7.0	23.0	19.0
AL8-R3/8-Z2	8	R3/8	20.7	27.8	30.0	35.1	12.0	16	17.0×18.5	14.6	9.0	7.0	23.0	28.0
AL10-R1/8-Z2	10	R1/8	24.7	29.2	33.9	38.0	8.0	19	17.0×18.5	17.5	5.0	5.0	22.0	23.0
AL10-R1/4-Z2	10	R1/4	24.7	32.4	33.9	41.1	12.0	19	17.0×18.5	17.5	8.0	8.0	38.0	25.0
AL10-R3/8-Z2	10	R3/8	24.7	34.2	33.9	43.0	12.0	19	17.0×18.5	17.5	11.0	9.0	37.0	30.0
AL10-R1/2-Z2	10	R1/2	24.7	34.3	36.9	43.0	16.0	19	22.0×24.5	17.5	12.0	9.0	37.0	53.0
AL12-R1/4-Z2	12	R1/4	26.3	35.0	36.8	45.0	12.0	20	19.0×21.0	20.0	8.0	8.0	42.0	31.0
AL12-R3/8-Z2	12	R3/8	26.3	33.5	36.8	43.5	12.0	20	19.0×21.0	20.0	11.0	11.0	46.0	32.0
AL12-R1/2-Z2	12	R1/2	26.3	36.5	38.6	46.5	16.0	20	22.0×24.5	20.0	12.0	11.0	46.0	53.0
AL16-R3/8	16	R3/8	34.9	45.0	48.4	59.0	12.0	27	24.0×27.0	28.0	11.0	11.0	70.0	70.0
AL16-R1/2	16	R1/2	34.9	48.0	48.4	62.0	15.0	27	24.0×27.0	28.0	12.0	12.0	93.0	84.0

*Made to order

90 degree internal elbow

●Millimeter size type



Product number	Applicable tubing outer diameter (mm)	T Thread size (RC)	L ₁ (mm)	L ₂ (mm)	L ₃ (mm)	L ₄ (mm)	A (mm)	F Tubing insertion length (mm)	H×φ Width across flat (mm)	D (mm)	Min. inner diameter (mm)	Effective sectional area (mm ²)	Weight (g)
AFL4-R1/8	4	RC1/8	17.2	21.7	24.9	26.6	8.0	13	14.0×15.4	9.8	3.0	—	13.0
AFL6-R1/8	6	RC1/8	18.5	24.2	26.2	30.5	8.0	15	14.0×15.4	12.6	5.0	—	15.0
AFL6-R1/4	6	RC1/4	18.5	28.2	27.8	34.5	12.0	15	17.0×18.5	12.6	5.0	—	23.0
AFL6-R3/8	6	RC3/8	18.5	28.7	30.8	35.0	12.5	15	22.0×24.5	12.6	5.0	—	37.0
AFL8-R1/8	8	RC1/8	20.7	25.2	28.4	32.5	8.0	16	14.0×15.4	14.6	7.0	—	17.0
AFL8-R1/4	8	RC1/4	20.7	29.2	30.0	36.5	12.0	16	17.0×18.5	14.6	7.0	—	25.0
AFL8-R3/8	8	RC3/8	20.7	29.7	33.0	37.0	12.5	16	22.0×24.5	14.6	7.0	—	38.0
AFL10-R1/4	10	RC1/4	24.7	32.2	33.9	41.0	12.0	19	17.0×18.5	17.5	9.0	—	29.0
AFL10-R3/8	10	RC3/8	24.7	33.7	36.9	42.5	12.5	19	22.0×24.5	17.5	9.0	—	45.0
AFL12-R3/8	12	RC3/8	26.3	36.2	38.6	46.2	12.5	20	22.0×24.5	20.0	10.0	—	49.0
AFL12-R1/2	12	RC1/2	26.3	39.2	39.6	49.2	15.5	20	24.0×26.5	20.0	10.0	—	54.0

Tubing

Clean tubing

Processed tubing

PushOne fitting

QuickSeal fitting

Clean fitting/Chemifit

Bamboo-shoot fitting

Control switch/Detachable series

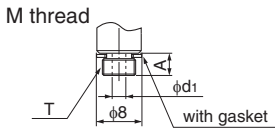
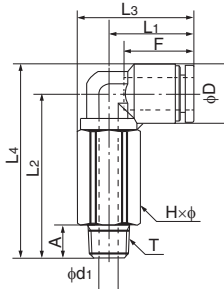
Jig/Tool/Accessory

Technical information

Reference

90 degree long elbow

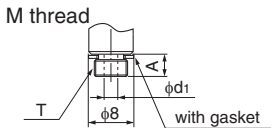
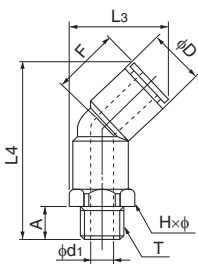
●Millimeter size type



Product number	Applicable tubing outer diameter (mm)	T Thread size (M,R)	L ₁ (mm)	L ₂ (mm)	L ₃ (mm)	L ₄ (mm)	A (mm)	F Tubing insertion length (mm)	H×φ Width across flat (mm)	D (mm)	d ₁ (mm)	Min. inner diameter (mm)	Effective sectional area (mm ²)	Weight (g)
ALL4-M5-Z2	4	M5×0.8	17.2	29.9	22.7	34.8	4.0	13	10.0×11.0	9.8	2.0	2.0	3.0	14.0
ALL4-R1/8-Z2	4	R1/8	17.2	32.4	22.7	37.3	8.0	13	10.0×11.0	9.8	5.0	3.0	4.0	15.0
ALL4-R1/4-Z2	4	R1/4	17.2	36.4	24.9	41.3	12.0	13	14.0×15.4	9.8	5.0	3.0	4.0	34.0
ALL6-M5-Z2	6	M5×0.8	18.5	34.7	25.0	41.0	4.0	15	12.0×13.0	12.6	2.0	2.0	3.5	23.0
ALL6-R1/8-Z2	6	R1/8	18.5	37.2	25.0	43.5	8.0	15	12.0×13.0	12.6	5.0	5.0	12.0	23.0
ALL6-R1/4-Z2	6	R1/4	18.5	41.2	26.2	47.5	12.0	15	14.0×15.4	12.6	7.0	5.0	12.0	34.0
ALL6-R3/8-Z2	6	R3/8	18.5	42.2	27.8	48.5	12.0	15	17.0×18.5	12.6	11.0	5.0	12.0	54.0
ALL8-R1/8-Z2	8	R1/8	20.7	40.2	28.4	47.5	8.0	16	14.0×15.4	14.6	5.0	5.0	18.5	33.0
ALL8-R1/4-Z2	8	R1/4	20.7	44.2	28.4	51.5	12.0	16	14.0×15.4	14.6	8.0	7.0	23.0	33.0
ALL8-R3/8-Z2	8	R3/8	20.7	45.2	30.0	52.5	12.0	16	17.0×18.5	14.6	9.0	7.0	23.0	55.0
ALL10-R1/8-Z2	10	R1/8	24.7	46.2	33.9	55.0	8.0	19	17.0×18.5	17.5	5.0	5.0	22.0	55.0
ALL10-R1/4-Z2	10	R1/4	24.7	50.2	33.9	59.0	12.0	19	17.0×18.5	17.5	8.0	8.0	38.0	55.0
ALL10-R3/8-Z2	10	R3/8	24.7	51.2	33.9	60.0	12.0	19	17.0×18.5	17.5	11.0	9.0	37.0	52.0
ALL10-R1/2-Z2	10	R1/2	24.7	55.2	36.9	64.0	16.0	19	22.0×24.5	17.5	12.0	9.0	37.0	106.0
ALL12-R1/4-Z2	12	R1/4	26.3	55.2	36.8	65.2	12.0	20	19.0×21.0	20.0	8.0	8.0	42.0	75.0
ALL12-R3/8-Z2	12	R3/8	26.3	56.2	36.8	66.2	12.0	20	19.0×21.0	20.0	11.0	11.0	46.0	73.0
ALL12-R1/2-Z2	12	R1/2	26.3	60.2	38.6	70.2	16.0	20	22.0×24.5	20.0	12.0	11.0	46.0	114.0

45 degree elbow

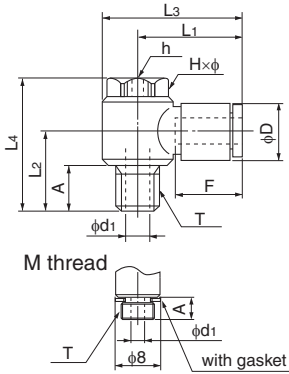
●Millimeter size type



Product number	Applicable tubing outer diameter (mm)	T Thread size (M,R)	L ₃ (mm)	L ₄ (mm)	A (mm)	F Tubing insertion length (mm)	H×φ Width across flat (mm)	D (mm)	d ₁ (mm)	Min. inner diameter (mm)	Effective sectional area (mm ²)	Weight (g)
A45L4-M5	4	M5×0.8	19.7	34.4	4.0	13	10.0×11.0	9.8	2.0	2.0	3.0	7.0
A45L4-R1/8	4	R1/8	19.7	36.9	8.0	13	10.0×11.0	9.8	5.0	3.0	4.0	9.0
A45L4-R1/4	4	R1/4	21.9	40.9	11.0	13	14.0×15.4	9.8	7.0	3.0	4.0	16.0
A45L6-M5	6	M5×0.8	22.4	38.6	4.0	15	12.0×13.0	12.6	2.0	2.0	3.5	10.0
A45L6-R1/8	6	R1/8	22.4	41.1	8.0	15	12.0×13.0	12.6	5.0	5.0	12.0	12.0
A45L6-R1/4	6	R1/4	23.6	45.1	11.0	15	14.0×15.4	12.6	7.0	5.0	12.0	18.0
A45L6-R3/8	6	R3/8	25.2	46.1	12.0	15	17.0×18.5	12.6	9.0	5.0	12.0	26.0
A45L8-R1/8	8	R1/8	25.5	44.0	8.0	16	14.0×15.4	14.6	5.0	5.0	18.5	15.0
A45L8-R1/4	8	R1/4	25.5	48.0	11.0	16	14.0×15.4	14.6	7.0	7.0	23.0	20.0
A45L8-R3/8	8	R3/8	27.0	49.0	12.0	16	17.0×18.5	14.6	9.0	7.0	23.0	28.0
A45L10-R1/8	10	R1/8	30.0	50.0	8.0	19	17.0×18.5	17.5	5.0	5.0	22.0	22.0
A45L10-R1/4	10	R1/4	30.0	54.0	11.0	19	17.0×18.5	17.5	7.0	7.0	34.5	27.0
A45L10-R3/8	10	R3/8	30.0	55.0	12.0	19	17.0×18.5	17.5	9.0	9.0	37.0	33.0
A45L10-R1/2	10	R1/2	33.0	59.0	15.0	19	22.0×24.5	17.5	12.0	9.0	38.5	52.0
A45L12-R1/4	12	R1/4	33.5	58.7	11.0	20	19.0×21.0	20.0	7.0	7.0	43.0	34.0
A45L12-R3/8	12	R3/8	33.5	59.7	12.0	20	19.0×21.0	20.0	9.0	9.0	47.0	40.0
A45L12-R1/2	12	R1/2	35.3	63.7	15.0	20	22.0×24.5	20.0	12.0	10.0	47.0	57.0

Tubing
Clean tubing
Processed tubing
PushOne fitting
QuickSeal fitting
Clean fitting/ Chemifit
Bamboo-shoot fitting
Control switch/ Detachable series
Jig/Tool/ Accessory
Technical information
Reference

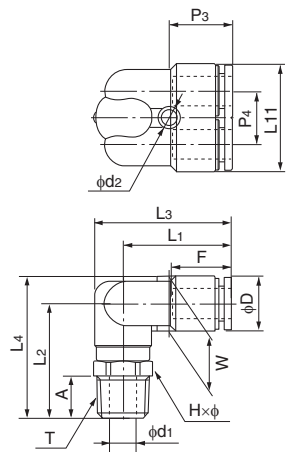
Universal elbow



●Millimeter size type

Product number	Applicable tubing outer diameter (mm)	T Thread size (M,R)	L ₁ (mm)	L ₂ (mm)	L ₃ (mm)	L ₄ (mm)	A (mm)	F Tubing insertion length (mm)	H×φ Width across flat (mm)	h (mm)	D (mm)	d ₁ (mm)	Min. inner diameter (mm)	Effective sectional area (mm ²)	Weight (g)
ALB4-M5	4	M5×0.8	20.4	11.5	25.3	21.0	4.0	13	8.0×9.0	3.0	9.8	2.0	2.0	3.0	10.0
ALB4-R1/8	4	R1/8	23.4	17.5	30.4	30.0	9.5	13	13.0×14.0	5.0	9.8	5.0	3.0	4.0	20.0
ALB6-M5	6	M5×0.8	20.8	11.5	25.6	21.0	4.0	15	8.0×9.0	3.0	12.6	2.0	2.0	3.5	10.0
ALB6-R1/8	6	R1/8	22.8	17.5	29.8	30.0	9.5	15	13.0×14.0	5.0	12.6	5.0	3.2	8.0	21.0
ALB6-R1/4	6	R1/4	24.8	22.9	34.5	37.5	13.4	15	17.0×18.3	6.0	12.6	7.0	4.2	9.0	43.0
ALB8-R1/8	8	R1/8	24.4	17.5	31.4	30.0	9.5	16	13.0×14.0	5.0	14.6	5.0	3.2	9.0	41.0
ALB8-R1/4	8	R1/4	26.4	22.9	36.1	37.5	13.4	16	17.0×18.3	6.0	14.6	7.0	4.2	14.5	44.0
ALB8-R3/8	8	R3/8	28.4	24.4	40.4	40.5	13.9	16	21.0×22.6	8.0	14.6	9.0	6.0	19.0	69.0
ALB10-R1/4	10	R1/4	29.4	22.9	39.1	37.5	13.4	19	17.0×18.3	6.0	17.5	7.0	4.2	15.5	74.0
ALB10-R3/8	10	R3/8	31.4	24.4	43.4	40.5	13.9	19	21.0×22.6	8.0	17.5	9.0	6.0	23.0	74.0
ALB12-R3/8	12	R3/8	34.3	24.3	48.3	40.5	13.8	20	24.0×26.0	8.0	20.0	10.0	8.0	25.5	92.0
ALB12-R1/2	12	R1/2	34.3	27.3	48.3	43.5	16.8	20	24.0×26.0	8.0	20.0	12.0	8.0	25.5	100.0

90 degree branch elbow



●Millimeter size type

Product number	Applicable tubing outer diameter (mm)	T Thread size (R)	L ₁ (mm)	L ₂ (mm)	L ₃ (mm)	L ₄ (mm)	L ₁₁ (mm)	A (mm)	F Tubing insertion length (mm)	H×φ Width across flat (mm)	P ₃ (mm)	P ₄ (mm)	W (mm)	D (mm)	d ₁ (mm)	d ₂ (mm)	Effective sectional area (mm ²)	Weight (g)
ALY6-R1/8	6	R1/8	25.6	25.2	32.1	31.5	24.8	8.0	15	12.0×13.0	14.8	12.2	12.6	12.6	5.0	4.2	—	16.0
ALY6-R1/4	6	R1/4	25.6	29.2	33.3	35.5	24.8	11.0	15	14.0×15.4	14.8	12.2	12.6	12.6	7.0	4.2	—	23.0
ALY8-R1/8	8	R1/8	28.2	26.2	35.9	33.5	28.8	8.0	16	14.0×15.4	16.4	14.2	14.6	14.6	5.0	4.2	—	21.0
ALY8-R1/4	8	R1/4	28.2	30.2	35.9	37.5	28.8	11.0	16	14.0×15.4	16.4	14.2	14.6	14.6	7.0	4.2	—	27.0
ALY8-R3/8	8	R3/8	28.2	31.2	37.5	38.5	28.8	12.0	16	17.0×18.5	16.4	14.2	14.6	14.6	9.0	4.2	—	35.0
ALY10-R1/4	10	R1/4	31.3	33.2	40.5	42.0	35.0	11.0	19	17.0×18.5	18.4	17.5	17.5	17.5	7.0	4.2	—	37.0
ALY10-R3/8	10	R3/8	31.3	34.2	40.5	43.0	35.0	12.0	19	17.0×18.5	18.4	17.5	17.5	17.5	9.0	4.2	—	43.0

Tubing

Clean tubing

Processed tubing

PushOne fitting

QuickSeal fitting

Clean fitting/ Chemifit

Bamboo-shoot fitting

Control switch/ Detachable series

Jig/Tool/ Accessory

Technical information

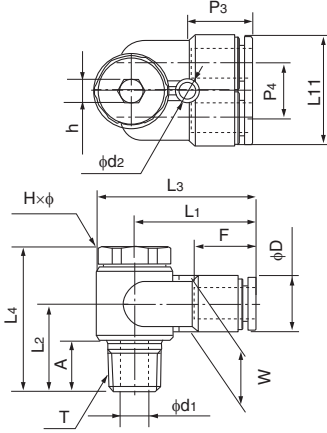
Reference

Universal branch elbow

●Millimeter size type



Product number	Applicable tubing outer diameter (mm)	T Thread size (R)	L ₁ (mm)	L ₂ (mm)	L ₃ (mm)	L ₄ (mm)	L ₁₁ (mm)	A (mm)	F Tubing insertion length (mm)	H×φ Width across flat (mm)	h Width across flat (mm)	P ₃ (mm)	P ₄ (mm)	W (mm)	D (mm)	d ₁ (mm)	d ₂ (mm)	Effective sectional area (mm ²)	Weight (g)
ALYB6-R1/8	6	R1/8	26.1	17.5	33.1	30.0	24.8	9.5	15	13.0×14.0	5.0	14.8	12.2	12.6	12.6	5.0	4.2	—	25.0
ALYB6-R1/4	6	R1/4	29.0	22.9	38.7	37.5	24.8	13.4	15	17.0×18.3	6.0	14.8	12.2	12.6	12.6	7.0	4.2	—	46.0
ALYB8-R1/4	8	R1/4	30.6	22.9	40.3	37.5	28.8	13.4	16	17.0×18.3	6.0	16.4	14.2	14.6	14.6	7.0	4.2	—	49.0
ALYB8-R3/8	8	R3/8	32.9	24.4	44.9	40.5	28.8	13.9	16	21.0×22.6	8.0	16.4	14.2	14.6	14.6	9.0	4.2	—	58.0
ALYB10-R1/4	10	R1/4	34.9	23.4	46.9	39.5	35.0	12.9	19	21.0×22.6	8.0	18.4	17.5	17.5	17.5	7.0	4.2	—	78.0
ALYB10-R3/8	10	R3/8	34.9	24.4	46.9	40.5	35.0	13.9	19	21.0×22.6	8.0	18.4	17.5	17.5	17.5	9.0	4.2	—	80.0

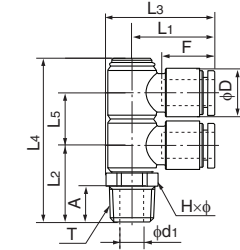


Double universal elbow

●Millimeter size type



Product number	Applicable tubing outer diameter (mm)	T Thread size (R)	L ₁ (mm)	L ₂ (mm)	L ₃ (mm)	L ₄ (mm)	L ₅ (mm)	A (mm)	F Tubing insertion length (mm)	H×φ Width across flat (mm)	D (mm)	d ₁ (mm)	Effective sectional area (mm ²)	Weight (g)
ALWB6-R1/8	6	R1/8	22.8	18.8	30.5	42.3	13.5	8.0	15	14.0×15.4	12.6	5.0	—	33.0
ALWB6-R1/4	6	R1/4	22.8	21.8	30.5	45.3	13.5	11.0	15	14.0×15.4	12.6	7.0	—	35.0
ALWB8-R1/4	8	R1/4	24.4	23.0	32.1	50.0	16.0	11.0	16	14.0×15.4	14.6	7.0	—	39.0
ALWB8-R3/8	8	R3/8	24.4	24.0	33.7	51.0	16.0	12.0	16	17.0×18.5	14.6	9.0	—	47.0
ALWB10-R1/4	10	R1/4	29.4	24.5	39.1	56.0	19.0	11.0	19	17.0×18.5	17.5	7.0	—	72.0
ALWB10-R3/8	10	R3/8	29.4	25.5	39.1	57.0	19.0	12.0	19	17.0×18.5	17.5	9.0	—	70.0

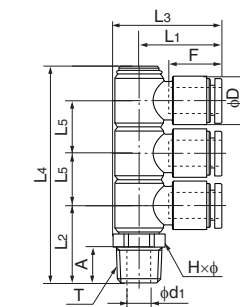


Triple universal elbow

●Millimeter size type



Product number	Applicable tubing outer diameter (mm)	T Thread size (R)	L ₁ (mm)	L ₂ (mm)	L ₃ (mm)	L ₄ (mm)	L ₅ (mm)	A (mm)	F Tubing insertion length (mm)	H×φ Width across flat (mm)	D (mm)	d ₁ (mm)	Effective sectional area (mm ²)	Weight (g)
ALTB6-R1/8	6	R1/8	22.8	18.8	30.5	55.5	13.5	8.0	15	14.0×15.4	12.6	5.0	—	43.0
ALTB6-R1/4	6	R1/4	22.8	21.8	30.5	58.5	13.5	11.0	15	14.0×15.4	12.6	7.0	—	45.0
ALTB8-R1/4	8	R1/4	24.4	23.0	32.1	66.0	16.0	11.0	16	14.0×15.4	14.6	7.0	—	51.0
ALTB8-R3/8	8	R3/8	24.4	24.0	33.7	67.0	16.0	12.0	16	17.0×18.5	14.6	9.0	—	59.0
ALTB10-R1/4	10	R1/4	29.4	24.5	39.1	75.5	19.0	11.0	19	17.0×18.5	17.5	7.0	—	98.0
ALTB10-R3/8	10	R3/8	29.4	25.5	39.1	76.5	19.0	12.0	19	17.0×18.5	17.5	9.0	—	92.0



Tubing

Clean tubing

Processed tubing

PushOne fitting

QuickSeal fitting

Clean fitting/ Chemifit

Bamboo-shoot fitting

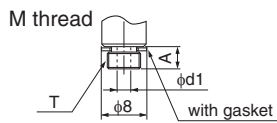
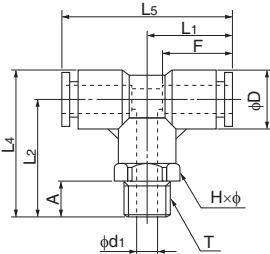
Control switch/ Detachable series

Jig/Tool/ Accessory

Technical information

Reference

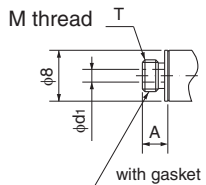
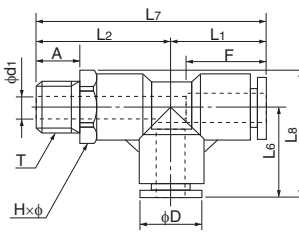
Tee



●Millimeter size type

Product number	Applicable tubing outer diameter (mm)	T Thread size (M,R)	L ₁ (mm)	L ₂ (mm)	L ₄ (mm)	L ₅ (mm)	A (mm)	F Tubing insertion length (mm)	H×φ Width across flat (mm)	D (mm)	d ₁ (mm)	Min. inner diameter (mm)	Effective sectional area (mm ²)	Weight (g)
AT4-M5	4	M5×0.8	17.2	20.2	25.1	34.4	4.0	13	10.0×11.0	9.8	2.0	2.0	3.0	8.0
AT4-R1/8	4	R1/8	17.2	22.7	27.6	34.4	8.0	13	10.0×11.0	9.8	5.0	3.0	4.0	10.0
AT4-R1/4	4	R1/4	17.2	26.7	31.6	34.4	11.0	13	14.0×15.4	9.8	7.0	3.0	4.0	17.0
AT6-M5	6	M5×0.8	18.5	22.7	29.0	37.0	4.0	15	12.0×13.0	12.6	2.0	2.0	3.5	12.0
AT6-R1/8	6	R1/8	18.5	25.2	31.5	37.0	8.0	15	12.0×13.0	12.6	5.0	4.6	12.0	14.0
AT6-R1/4	6	R1/4	18.5	29.2	35.5	37.0	11.0	15	14.0×15.4	12.6	7.0	4.6	12.0	21.0
AT6-R3/8	6	R3/8	18.5	30.2	36.5	37.0	12.0	15	17.0×18.5	12.6	9.0	4.6	12.0	29.0
AT8-R1/8	8	R1/8	20.7	26.2	33.5	41.4	8.0	16	14.0×15.4	14.6	5.0	5.0	18.5	18.0
AT8-R1/4	8	R1/4	20.7	30.2	37.5	41.4	11.0	16	14.0×15.4	14.6	7.0	7.0	23.0	24.0
AT8-R3/8	8	R3/8	20.7	31.2	38.5	41.4	12.0	16	17.0×18.5	14.6	9.0	7.0	23.0	32.0
AT10-R1/8	10	R1/8	24.7	29.2	38.0	49.3	8.0	19	17.0×18.5	17.5	5.0	5.0	22.0	28.0
AT10-R1/4	10	R1/4	24.7	33.2	42.0	49.3	11.0	19	17.0×18.5	17.5	7.0	7.0	34.5	34.0
AT10-R3/8	10	R3/8	24.7	34.2	43.0	49.3	12.0	19	17.0×18.5	17.5	9.0	9.0	37.0	39.0
AT10-R1/2	10	R1/2	24.7	38.2	47.0	49.3	15.0	19	22.0×24.5	17.5	12.0	9.0	37.0	58.0
AT12-R1/4	12	R1/4	26.3	35.7	45.7	52.6	11.0	20	19.0×21.0	20.0	7.0	7.0	36.0	43.0
AT12-R3/8	12	R3/8	26.3	36.7	46.7	52.6	12.0	20	19.0×21.0	20.0	9.0	9.0	43.0	48.0
AT12-R1/2	12	R1/2	26.3	40.7	50.7	52.6	15.0	20	22.0×24.5	20.0	12.0	10.0	43.0	65.0
AT16-R3/8	16	R3/8	34.9	45.0	59.0	69.8	12.0	27	24.0×27.0	28.0	11.0	11.0	70.0	92.0
AT16-R1/2	16	R1/2	34.9	48.0	62.0	69.8	15.0	27	24.0×27.0	28.0	12.0	12.0	93.0	106.0

Service tee



●Millimeter size type

Product number	Applicable tubing outer diameter (mm)	T Thread size (M,R)	L ₁ (mm)	L ₂ (mm)	L ₆ (mm)	L ₇ (mm)	L ₈ (mm)	A (mm)	F Tubing insertion length (mm)	H×φ Width across flat (mm)	D (mm)	d ₁ (mm)	Min. inner diameter (mm)	Effective sectional area (mm ²)	Weight (g)
AST4-M5	4	M5×0.8	17.2	20.2	17.2	37.4	22.7	4.0	13	10.0×11.0	9.8	2.0	2.0	3.0	8.0
AST4-R1/8	4	R1/8	17.2	22.7	17.2	39.9	22.7	8.0	13	10.0×11.0	9.8	5.0	3.0	4.0	10.0
AST4-R1/4	4	R1/4	17.2	26.7	17.2	43.9	24.9	11.0	13	14.0×15.4	9.8	7.0	3.0	4.0	18.0
AST6-M5	6	M5×0.8	18.5	22.7	18.5	41.2	25.0	4.0	15	12.0×13.0	12.6	2.0	2.0	3.5	12.0
AST6-R1/8	6	R1/8	18.5	25.2	18.5	43.7	25.0	8.0	15	12.0×13.0	12.6	5.0	5.0	12.0	14.0
AST6-R1/4	6	R1/4	18.5	29.2	18.5	47.7	26.2	11.0	15	14.0×15.4	12.6	7.0	5.0	12.0	21.0
AST6-R3/8	6	R3/8	18.5	30.2	18.5	48.7	27.8	12.0	15	17.0×18.5	12.6	9.0	5.0	12.0	29.0
AST8-R1/8	8	R1/8	20.7	26.2	20.7	46.9	28.4	8.0	16	14.0×15.4	14.6	5.0	5.0	18.5	18.0
AST8-R1/4	8	R1/4	20.7	30.2	20.7	50.9	28.4	11.0	16	14.0×15.4	14.6	7.0	7.0	23.0	24.0
AST8-R3/8	8	R3/8	20.7	31.2	20.7	51.9	30.0	12.0	16	17.0×18.5	14.6	9.0	7.0	23.0	32.0
AST10-R1/8	10	R1/8	24.7	29.2	24.7	53.9	33.9	8.0	19	17.0×18.5	17.5	5.0	5.0	22.0	28.0
AST10-R1/4	10	R1/4	24.7	33.2	24.7	57.9	33.9	11.0	19	17.0×18.5	17.5	7.0	7.0	34.5	34.0
AST10-R3/8	10	R3/8	24.7	34.2	24.7	58.9	33.9	12.0	19	17.0×18.5	17.5	9.0	9.0	37.0	40.0
AST10-R1/2	10	R1/2	24.7	38.2	24.7	62.9	36.9	15.0	19	22.0×24.5	17.5	12.0	9.0	37.0	58.0
AST12-R1/4	12	R1/4	26.3	35.7	26.3	63.0	36.8	11.0	20	19.0×21.0	20.0	7.0	7.0	36.0	43.0
AST12-R3/8	12	R3/8	26.3	36.7	26.3	63.0	36.8	12.0	20	19.0×21.0	20.0	9.0	9.0	43.0	48.0
AST12-R1/2	12	R1/2	26.3	40.7	26.3	67.0	38.6	15.0	20	22.0×24.5	20.0	12.0	10.0	43.0	65.0
AST16-R3/8	16	R3/8	34.9	45.0	34.9	79.9	48.4	12.0	27	24.0×27.0	28.0	11.0	11.0	70.0	92.0
AST16-R1/2	16	R1/2	34.9	48.0	34.9	82.9	48.4	15.0	27	24.0×27.0	28.0	12.0	12.0	93.0	106.0

Tubing

Clean tubing

Processed tubing

PushOne fitting

QuickSeal fitting

Clean fitting/ Chemifit

Bamboo-shoot fitting

Control switch/ Detachable series

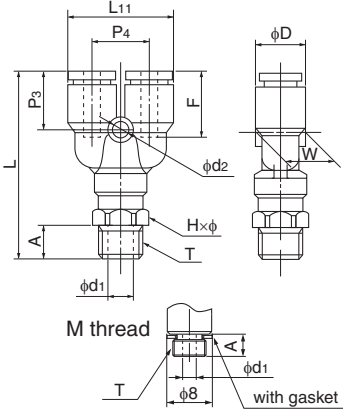
Jig/Tool/ Accessory

Technical information

Reference

Y joint

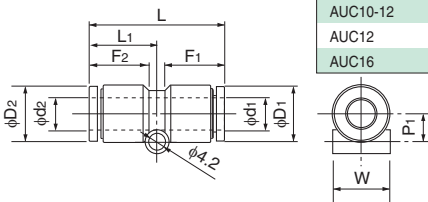
●Millimeter size type



Product number	Applicable tubing outer diameter (mm)	T Thread size (M,R)	L (mm)	L ₁₁ (mm)	A (mm)	F Tubing insertion length (mm)	H×φ Width across flat (mm)	P ₃ (mm)	P ₄ (mm)	W (mm)	D (mm)	d ₁ (mm)	d ₂ (mm)	Min. inner diameter (mm)	Effective sectional area (mm ²)	Weight (g)
AY4-M5	4	M5×0.8	37.9	20.8	4.0	13	10.0×11.0	13.4	11.0	9.8	9.8	2.0	3.2	2.0	2.5	9.0
AY4-R1/8	4	R1/8	40.4	20.8	8.0	13	10.0×11.0	13.4	11.0	9.8	9.8	5.0	3.2	3.0	3.5	11.0
AY4-R1/4	4	R1/4	44.4	20.8	11.0	13	14.0×15.4	13.4	11.0	9.8	9.8	7.0	3.2	3.0	3.5	18.0
AY6-M5	6	M5×0.8	41.3	24.8	4.0	15	12.0×13.0	14.8	12.2	12.5	12.6	2.0	4.2	2.0	2.5	13.0
AY6-R1/8	6	R1/8	43.8	24.8	8.0	15	12.0×13.0	14.8	12.2	12.5	12.6	5.0	4.2	5.0	9.0	15.0
AY6-R1/4	6	R1/4	47.8	24.8	11.0	15	14.0×15.4	14.8	12.2	12.5	12.6	7.0	4.2	5.0	9.0	22.0
AY6-R3/8	6	R3/8	48.8	24.8	12.0	15	17.0×18.5	14.8	12.2	12.5	12.6	9.0	4.2	5.0	9.0	30.0
AY8-R1/8	8	R1/8	46.9	28.8	8.0	16	14.0×15.4	16.4	14.2	14.6	14.6	5.0	4.2	5.0	17.5	20.0
AY8-R1/4	8	R1/4	50.9	28.8	11.0	16	14.0×15.4	16.4	14.2	14.6	14.6	7.0	4.2	7.0	20.0	25.0
AY8-R3/8	8	R3/8	51.9	28.8	12.0	16	17.0×18.5	16.4	14.2	14.6	14.6	9.0	4.2	7.0	20.0	33.0
AY10-R1/4	10	R1/4	55.9	35.0	11.0	19	17.0×18.5	18.4	17.5	17.5	17.5	7.0	4.2	7.0	27.5	33.0
AY10-R3/8	10	R3/8	56.9	35.0	12.0	19	17.0×18.5	18.4	17.5	17.5	17.5	9.0	4.2	9.0	28.0	41.0
AY10-R1/2	10	R1/2	60.9	35.0	15.0	19	22.0×24.5	18.4	17.5	17.5	17.5	12.0	4.2	9.0	28.0	60.0
AY12-R1/4	12	R1/4	60.8	40.0	11.0	20	19.0×21.0	20.3	20.0	20.0	20.0	7.0	4.2	7.0	34.5	47.0
AY12-R3/8	12	R3/8	61.8	40.0	12.0	20	19.0×21.0	20.3	20.0	20.0	20.0	9.0	4.2	9.0	40.0	52.0
AY12-R1/2	12	R1/2	65.8	40.0	15.0	20	22.0×24.5	20.3	20.0	20.0	20.0	12.0	4.2	10.0	40.0	70.0
AY16-R3/8	16	R3/8	78.6	55.5	12.0	27	24.0×27.0	26.6	27.5	27.5	28.0	11.0	4.2	11.0	70.0	103.0
AY16-R1/2	16	R1/2	81.6	55.5	15.0	27	24.0×27.0	26.6	27.5	27.5	28.0	12.0	4.2	12.0	71.0	117.0

Union connector

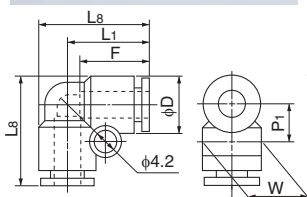
●Millimeter size type



Product number	d ₁ Applicable tubing outer diameter (mm)	d ₂ Applicable tubing outer diameter (mm)	L (mm)	L ₁ (mm)	P ₁ (mm)	F ₁ Tubing insertion length (mm)	F ₂ Tubing insertion length (mm)	D ₁ (mm)	D ₂ (mm)	W (mm)	Min. inner diameter (mm)	Effective sectional area (mm ²)	Weight (g)
AUC4	4	4	31.8	15.9	5.0	13	13	9.8	9.8	9.7	3.0	3.5	4.0
AUC4-6	4	6	32.7	16.8	6.0	13	15	9.8	12.6	12.5	3.0	3.5	5.0
AUC6	6	6	33.6	16.8	6.0	15	15	12.6	12.6	12.5	5.0	12.5	6.0
AUC6-8	6	8	34.7	17.9	7.0	15	16	12.6	14.6	14.5	5.0	11.5	7.0
AUC8	8	8	35.8	17.9	7.0	16	16	14.6	14.6	14.5	7.0	28.0	8.0
AUC8-10	8	10	38.8	20.9	8.5	16	19	14.6	17.5	17.5	7.0	31.5	11.0
AUC10	10	10	41.7	20.9	8.5	19	19	17.5	17.5	17.5	9.0	45.0	14.0
AUC10-12	10	12	42.7	21.8	9.8	19	20	17.5	20.0	20.0	9.0	53.0	17.0
AUC12	12	12	43.6	21.8	9.8	20	20	20.0	20.0	20.0	11.0	67.0	19.0
AUC16	16	16	56.2	28.1	13.8	27	27	28.0	28.0	27.5	13.0	110.0	48.0

90 degree union elbow

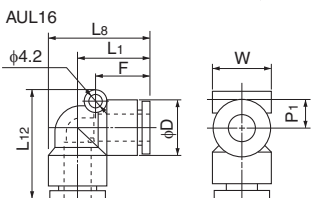
●Millimeter size type



Product number	Applicable tubing outer diameter (mm)	L ₁ (mm)	L ₈ (mm)	P ₁ (mm)	F Tubing insertion length (mm)	D (mm)	W (mm)	Min. inner diameter (mm)	Effective sectional area (mm ²)	Weight (g)
AUL4	4	17.2	22.1	6.9	13	9.8	9.7	3.0	3.5	4.0
AUL6	6	18.5	24.8	8.3	15	12.6	12.5	5.0	9.5	6.0
AUL8	8	20.7	28.0	9.3	16	14.6	14.5	7.0	19.5	9.0
AUL10	10	24.7	33.4	10.8	19	17.5	17.5	9.0	32.5	15.0
AUL12	12	26.3	36.3	12.1	20	20.0	20.0	11.0	45.5	20.0

Product number	Applicable tubing outer diameter (mm)	L ₁ (mm)	L ₈ (mm)	L ₁₂ (mm)	P ₁ (mm)	F Tubing insertion length (mm)	D (mm)	W (mm)	Min. inner diameter (mm)	Effective sectional area (mm ²)	Weight (g)
* AUL16	16	34.9	48.9	50.8	12.9	27	28.0	27.5	13.0	97.5	50.0

*AUL16 has a different screw hole position.



Tubing

Clean tubing

Processed tubing

PushOne fitting

QuickSeal fitting

Clean fitting/ Chemifit

Bamboo-shoot fitting

Control switch/ Detachable series

Jig/Tool/ Accessory

Technical information

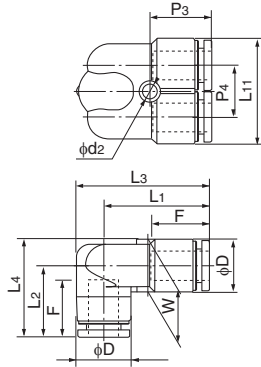
Reference

90 degree branch union elbow

●Millimeter size type



Product number	Applicable tubing outer diameter (mm)	L ₁ (mm)	L ₂ (mm)	L ₃ (mm)	L ₄ (mm)	L ₁₁ (mm)	F Tubing insertion length (mm)	P ₃ (mm)	P ₄ (mm)	W (mm)	D (mm)	d ₂ (mm)	Min. inner diameter (mm)	Effective sectional area (mm ²)	Weight (g)
AULY6	6	25.6	18.0	31.9	24.3	24.8	15	14.8	12.2	12.6	12.6	4.2	5.0	—	10.0
AULY8	8	28.2	19.6	35.5	26.9	28.8	16	16.4	14.2	14.6	14.6	4.2	7.0	—	14.0
AULY10	10	31.3	22.6	40.0	31.3	35.0	19	18.4	17.5	17.5	17.5	4.2	9.0	—	23.0

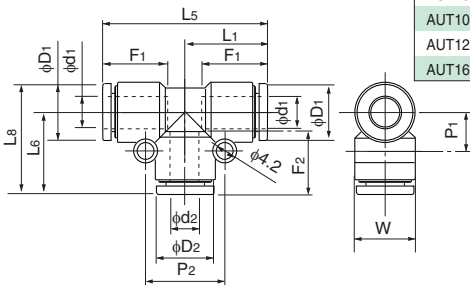


Union tee

●Millimeter size type



Product number	d ₁ Applicable tubing outer diameter (mm)	d ₂ Applicable tubing outer diameter (mm)	L ₁ (mm)	L ₅ (mm)	L ₆ (mm)	L ₈ (mm)	F ₁ Tubing insertion length (mm)	F ₂ Tubing insertion length (mm)	P ₁ (mm)	P ₂ (mm)	D ₁ (mm)	D ₂ (mm)	W (mm)	Min. inner diameter (mm)	Effective sectional area (mm ²)	Weight (g)
AUT4	4	4	17.2	34.4	17.2	22.1	13	13	6.9	14.0	9.8	9.8	9.7	3.0	3.5	6.0
AUT4-6	4	6	17.7	35.4	18.0	22.9	13	15	6.8	17.0	9.8	12.6	12.5	3.0	2.5	8.0
AUT6	6	6	18.5	37.0	18.5	24.8	15	15	8.3	17.0	12.6	12.6	12.5	5.0	4.5	9.0
AUT6-8	6	8	19.5	39.0	20.4	26.7	15	16	8.2	19.0	12.6	14.6	14.5	5.0	15.5	11.0
AUT8	8	8	20.7	41.4	20.7	28.0	16	16	9.3	19.0	14.6	14.6	14.5	7.0	19.5	13.0
AUT8-10	8	10	21.7	43.4	24.4	31.7	16	19	9.2	22.0	14.6	17.5	17.5	7.0	21.0	18.0
AUT10	10	10	24.7	49.3	24.7	33.4	19	19	10.8	22.0	17.5	17.5	17.5	9.0	32.5	22.0
AUT10-12	10	12	25.6	51.1	26.3	35.1	19	20	10.8	24.0	17.5	20.0	20.0	9.0	27.0	26.0
AUT12	12	12	26.3	52.6	26.3	36.3	20	20	12.1	24.0	20.0	20.0	20.0	11.0	45.5	29.0
AUT16	16	16	34.9	69.8	34.9	48.9	27	27	15.9	31.7	28.0	28.0	27.5	13.0	97.0	73.0

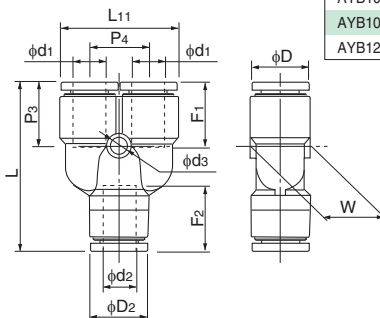


Y union

●Millimeter size type



Product number	d ₁ Applicable tubing outer diameter (mm)	d ₂ Applicable tubing outer diameter (mm)	L (mm)	L ₁₁ (mm)	F ₁ Tubing insertion length (mm)	F ₂ Tubing insertion length (mm)	P ₃ (mm)	P ₄ (mm)	W (mm)	D ₁ (mm)	D ₂ (mm)	d ₃ (mm)	Min. inner diameter (mm)	Effective sectional area (mm ²)	Weight (g)
AYB4-4	4	4	33.8	20.8	13	13	13.4	11.0	9.8	9.8	9.8	3.2	3.0	3.0	6.0
AYB4-6	4	6	34.2	20.8	13	15	13.4	11.0	12.5	9.8	12.6	3.2	3.0	2.5	8.0
AYB6-6	6	6	37.5	24.8	15	15	14.8	12.2	12.5	12.6	12.6	4.2	5.0	8.0	10.0
AYB6-8	6	8	39.2	24.8	15	16	14.8	12.2	14.5	12.6	14.6	4.2	5.0	17.0	12.0
AYB8-8	8	8	42.9	28.8	16	16	16.4	14.2	14.6	14.6	14.6	4.2	7.0	18.0	14.0
AYB8-10	8	10	44.8	28.8	16	19	16.4	14.2	17.5	14.6	17.5	4.2	7.0	22.5	19.0
AYB10-10	10	10	48.3	35.0	19	19	18.4	17.5	17.5	17.5	17.5	4.2	9.0	27.0	24.0
AYB10-12	10	12	49.4	35.0	19	20	18.4	17.5	20.0	17.5	20.0	4.2	9.0	30.0	29.0
AYB12-12	12	12	54.0	40.0	20	20	20.3	20.0	20.0	20.0	20.0	4.2	11.0	38.5	33.0



Tubing

Clean tubing

Processed tubing

PushOne fitting

QuickSeal fitting

Clean fitting/Chemfit

Bamboo-shoot fitting

Control switch/Detachable series

Jig/Tool/Accessory

Technical information

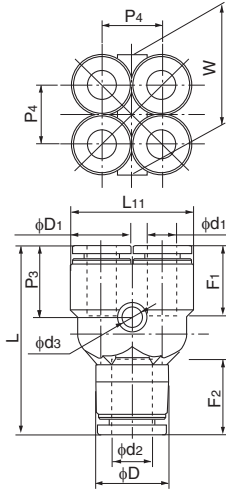
Reference

Double Y union

●Millimeter size type



Product number	d1 Applicable tubing outer diameter (mm)	d2 Applicable tubing outer diameter (mm)	L (mm)	L11 (mm)	F1 Tubing insertion length (mm)	F2 Tubing insertion length (mm)	P3 (mm)	P4 (mm)	W (mm)	D1 (mm)	D (mm)	ds (mm)	Min. inner diameter (mm)	Effective sectional area (mm ²)	Weight (g)
AUWY4-6	4	6	34.2	19.8	13	15	13.4	10.0	19.8	9.8	12.6	3.2	3.5	—	10.0
AUWY6-8	6	8	39.2	24.8	15	16	14.8	12.2	24.8	12.6	14.6	4.2	5.0	—	16.0

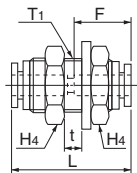


Panel touch connector

●Millimeter size type



Product number	Applicable tubing outer diameter (mm)	L (mm)	F Tubing insertion length (mm)	t Max. panel thickness (mm)	H4 (mm)	T1 Recommended panel hole diameter (mm)	Washer outer diameter (mm)	Washer thickness (mm)	Thread length (mm)	Min. inner diameter (mm)	Effective sectional area (mm ²)	Weight (g)
APC4	4	31.8	13	8.0	17.0	13	20	2.0	20	3.0	3.5	5.0
APC6	6	33.6	15	9.5	19.0	15	24	2.5	22	5.0	12.5	7.0
APC8	8	35.8	16	10.5	22.0	17	28	2.5	23	7.0	28.0	9.0
APC10	10	41.7	19	14.0	27.0	21	34	3.0	27	9.0	45.0	16.0
APC12	12	43.6	20	16.0	30.0	23	37	3.0	29	11.0	67.0	67.0

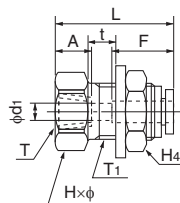


Internal panel touch connector

●Millimeter size type



Product number	Applicable tubing outer diameter (mm)	T Thread size (RC)	L (mm)	A (mm)	F Tubing insertion length (mm)	H×φ Width across flat (mm)	H4 (mm)	t Max. panel thickness (mm)	T1 Recommended panel hole diameter (mm)	d1 (mm)	Washer outer diameter (mm)	Washer thickness (mm)	Min. inner diameter (mm)	Effective sectional area (mm ²)	Weight (g)
APFC4-R1/8	4	RC1/8	27.9	8.7	13	17.0×18.5	17.0	8.0	13	3.0	20	2.0	3.0	4.0	22.0
APFC6-R1/8	6	RC1/8	29.8	8.7	15	19.0×21.0	19.0	9.0	15	5.0	24	2.5	5.0	10.5	44.0
APFC6-R1/4	6	RC1/4	35.3	13.0	15	19.0×21.0	19.0	9.0	15	5.0	24	2.5	5.0	10.5	50.0
APFC8-R1/4	8	RC1/4	34.4	13.0	16	22.0×24.5	22.0	10.5	17	7.0	28	2.5	7.0	25.0	64.0
APFC8-R3/8	8	RC3/8	38.4	13.5	16	22.0×24.5	22.0	10.5	17	7.0	28	2.5	7.0	26.0	68.0
APFC10-R1/4	10	RC1/4	40.4	13.0	19	27.0×30.0	27.0	14.0	21	9.0	34	3.0	9.0	40.0	117.0
APFC10-R3/8	10	RC3/8	40.4	13.5	19	27.0×30.0	27.0	14.0	21	9.0	34	3.0	9.0	40.0	107.0
APFC12-R1/4	12	RC1/4	42.3	13.0	20	30.0×33.5	30.0	16.0	23	10.5	37	3.0	10.5	45.0	147.0
APFC12-R3/8	12	RC3/8	42.3	13.5	20	30.0×33.5	30.0	16.0	23	11.0	37	3.0	11.0	50.0	138.0



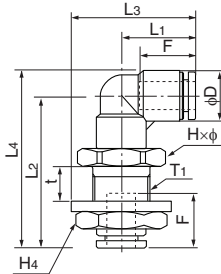
Tubing
Clean tubing
Processed tubing
PushOne fitting
QuickSeal fitting
Clean fitting/ Chemifit
Bamboo-shoot fitting
Control switch/ Detachable series
Jig/Tool/ Accessory
Technical information
Reference

90 degree panel touch elbow

●Millimeter size type



Product number	Applicable tubing outer diameter (mm)	L ₁ (mm)	L ₂ (mm)	L ₃ (mm)	L ₄ (mm)	F Tubing insertion length (mm)	H×φ Width across flat (mm)	H ₄ Width across flat (mm)	t Max. panel thickness (mm)	T ₁ Recommended panel hole diameter (mm)	D (mm)	Washer outer diameter (mm)	Washer thickness (mm)	Min. inner diameter (mm)	Effective sectional area (mm ²)	Weight (g)
APL4	4	17.2	35.6	27.7	40.5	13	17.0×18.5	17.0	7.5	13	9.8	21	2.5	3.0	—	32.0
APL6	6	18.5	40.0	30.5	46.3	15	19.0×21.0	19.0	9.0	15	12.6	24	2.5	5.0	—	43.0
APL8	8	20.7	43.6	34.7	50.9	16	22.0×24.5	22.0	10.0	17	14.6	28	3.0	7.0	—	62.0
APL10	10	24.7	51.6	41.7	60.3	19	27.0×30.0	27.0	14.0	21	17.5	34	3.0	9.0	—	101.0
APL12	12	26.3	56.0	44.8	66.0	20	30.0×33.5	30.0	16.0	23	20.0	37	3.0	10.0	—	126.0

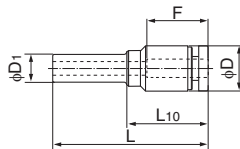


Reducer

●Millimeter size type



Product number	Applicable tubing outer diameter (mm)	D ₁ Insertion part diameter (mm)	L (mm)	L ₁₀ (mm)	F Tubing insertion length (mm)	D (mm)	Min. inner diameter (mm)	Effective sectional area (mm ²)	Weight (g)
AR4-6-Z2	4	6	34.0	17.5	13	9.8	3.0	3.5	3.0
AR4-8-Z2	4	8	31.5	18.5	13	9.8	3.0	3.5	3.0
AR6-8-Z2	6	8	34.3	17.3	15	12.6	5.0	10.5	4.0
AR6-10-Z2	6	10	35.2	20.2	15	12.6	5.0	10.5	4.0
AR6-12-Z2	6	12	36.7	20.9	15	12.6	5.0	10.5	5.0
AR8-10-Z2	8	10	39.0	18.5	16	14.6	7.0	28.0	5.0
AR8-12-Z2	8	12	37.9	15.8	16	14.6	7.0	28.0	5.0
AR10-12-Z2	10	12	42.5	20.5	19	17.5	9.0	45.0	8.0



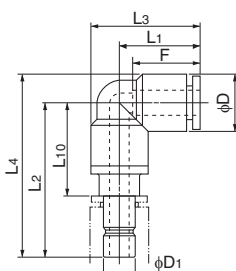
Adapter elbow

●Millimeter size type



Product number	Applicable tubing outer diameter (mm)	D ₁ Insertion part diameter (mm)	L ₁ (mm)	L ₂ (mm)	L ₃ (mm)	L ₄ (mm)	L ₁₀ (mm)	F Tubing insertion length (mm)	D (mm)	Min. inner diameter (mm)	Effective sectional area (mm ²)	Weight (g)
AAL4	4	4	17.2	30.7	22.1	35.6	14.7	13	9.8	3.0	4.0	6.0
AAL6	6	6	18.5	34.2	24.4	40.5	17.7	15	12.6	4.5	12.0	10.0
AAL8	8	8	20.7	35.7	27.6	43.0	18.7	16	14.6	6.0	20.0	14.0
AAL10	10	10	24.7	41.2	33.0	50.0	22.7	19	17.5	8.0	35.0	22.0
AAL12	12	12	26.3	45.2	35.7	55.2	25.2	20	20.0	10.0	43.0	30.0

⚠ Caution: Once an adapter elbow is inserted into a PushOne part, the part cannot be used to connect a tubing.



Tubing

Clean tubing

Processed tubing

PushOne fitting

QuickSeal fitting

Clean fitting/Chemifit

Bamboo-shoot fitting

Control switch/Detachable series

Jig/Tool/Accessory

Technical information

Reference

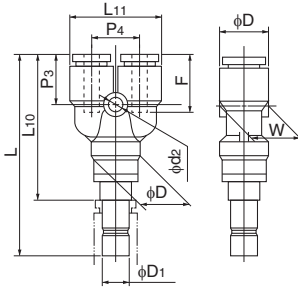
Y plug



● Millimeter size type

Product number	Applicable tubing outer diameter (mm)	D1 Insertion part diameter (mm)	L (mm)	L10 (mm)	L11 (mm)	F Tubing insertion length (mm)	P3 (mm)	P4 (mm)	W (mm)	D (mm)	d2 (mm)	Min. inner diameter (mm)	Effective sectional area (mm ²)	Weight (g)
AYA4-4	4	4	48.4	32.4	20.8	13	13.4	11.0	9.8	9.8	3.2	3.0	3.5	8.0
AYA6-6	6	6	52.8	36.3	24.8	15	14.8	12.2	12.5	12.6	4.2	4.5	9.0	14.0
AYA8-8	8	8	56.4	39.4	28.8	16	16.4	14.2	14.6	14.6	4.2	6.0	18.0	19.0
AYA10-10	10	10	63.9	45.4	35.0	19	18.4	17.5	17.5	17.5	4.2	8.0	28.0	31.0
AYA12-12	12	12	70.3	50.3	40.0	20	20.3	20.0	20.0	20.0	4.2	10.0	40.0	42.0

⚠ Caution: Once a Y plug elbow is inserted into a PushOne part, the part cannot be used to connect a tubing.

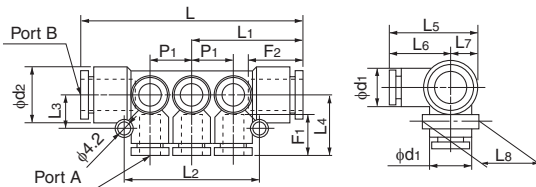


Manifold A type



● Millimeter size type

Product number	Applicable tubing outer diameter (mm)		A Number of ports	L (mm)	L1 (mm)	L2 (mm)	L3 (mm)	L4 (mm)	L5 (mm)	L6 (mm)	L7 (mm)	L8 (mm)	F1 Tubing insertion length (mm)	F2 Tubing insertion length (mm)	P1 (mm)	d1 (mm)	d2 (mm)	Effective sectional area (mm ²)	Weight (g)
	Port A	Port B																	
AMA4-8-6	4	8	6	62.8	31.4	36.0	10.0	19.5	28.8	19.5	9.3	18.5	13	16	10.6	9.8	14.6	—	20.0
AMA4-8-10	4	8	10	84.3	42.2	57.2	10.0	19.8	29.1	19.8	9.3	18.5	13	16	10.6	9.8	14.6	—	33.0
AMA6-10-6	6	10	6	74.7	37.4	44.0	11.5	20.8	30.1	20.8	9.3	18.5	15	19	13.0	12.6	17.5	—	37.0
AMA6-10-10	6	10	10	100.7	50.4	70.0	11.5	21.1	30.4	21.1	9.3	18.5	15	19	13.0	12.6	17.5	—	54.0
AMA8-12-6	8	12	6	84.2	42.1	51.0	12.5	23.0	33.5	23.0	10.5	21.0	16	20	15.5	14.6	20.0	—	50.0
AMA8-12-10	8	12	10	115.1	57.6	82.0	12.5	23.0	33.5	23.0	10.5	21.0	16	20	15.5	14.6	20.0	—	68.0

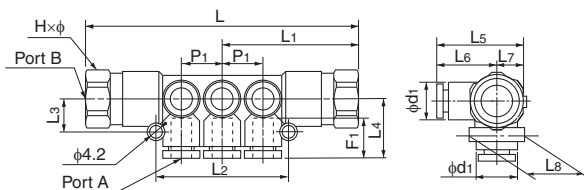


Manifold B type

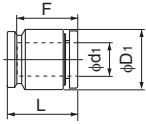


● Millimeter size type

Product number	Applicable tubing outer diameter (mm)		Thread size (RC)	A Number of ports	L (mm)	L1 (mm)	L2 (mm)	L3 (mm)	L4 (mm)	L5 (mm)	L6 (mm)	L7 (mm)	L8 (mm)	F1 Tubing insertion length (mm)	P1 (mm)	d1 (mm)	H×φ Width across flat (mm)	Effective sectional area (mm ²)	Weight (g)
	Port A	Port B																	
AMB4-1/4-6	4	RC1/4	6	84.0	42.0	36.0	10.0	19.5	28.8	19.5	9.3	18.5	13	10.6	9.8	17.0x18.5	—	58.0	
AMB4-1/4-10	4	RC1/4	10	105.5	52.8	57.2	10.0	19.8	29.1	19.8	9.3	18.5	13	10.6	9.8	17.0x18.5	—	67.0	
AMB6-1/4-6	6	RC1/4	6	96.0	48.0	44.0	11.5	20.8	30.1	20.8	9.3	18.5	15	13.0	12.6	17.0x18.5	—	79.0	
AMB6-1/4-10	6	RC1/4	10	122.0	61.0	70.0	11.5	21.1	30.4	21.1	9.3	18.5	15	13.0	12.6	17.0x18.5	—	96.0	
AMB8-3/8-6	8	RC3/8	6	105.6	52.8	51.0	12.5	23.0	33.5	23.0	10.5	21.0	16	15.5	14.6	19.0x21.0	—	92.0	
AMB8-3/8-10	8	RC3/8	10	136.5	68.3	82.0	12.5	23.0	33.5	23.0	10.5	21.0	16	15.5	14.6	19.0x21.0	—	117.0	



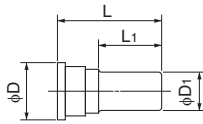
Tubing cap



●Millimeter size type

Product number	d ₁ Applicable tubing outer diameter (mm)	D ₁ (mm)	F Tubing insertion length (mm)	L (mm)	Weight (g)
ACC4	4	9.8	13	15.0	2.0
ACC6	6	12.6	15	16.9	3.0
ACC8	8	14.6	16	17.9	4.0
ACC10	10	17.5	19	21.7	6.0
ACC12	12	20.0	20	22.6	8.0

Blank plug

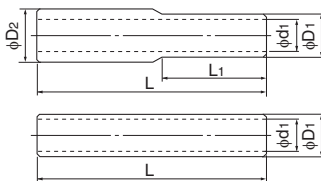


●Millimeter size type

Product number	D ₁ Insertion part diameter (mm)	L (mm)	L ₁ (mm)	D (mm)	Weight (g)
BC4	4	28.0	15.5	7.7	0.8
BC6	6	28.0	16.0	9.7	1.2
BC8	8	29.0	16.0	11.7	1.7
BC10	10	32.0	17.7	14.0	2.5
BC12	12	34.0	20.4	16.0	3.8

⚠ Caution: Material: POM (not flame-retardant resin)

Nipple



●Millimeter size type

Product number	D ₁ Insertion part diameter (mm)	D ₂ Insertion part diameter (mm)	d ₁ (mm)	L (mm)	L ₁ (mm)	Weight (g)
EN4	4	—	2.5	37.0	—	1.0
EN4-6	4	6	2.5	38.0	18.5	1.0
EN6	6	—	4.0	39.0	—	1.0
EN6-8	6	8	4.0	41.0	19.5	1.0
EN8	8	—	6.0	43.0	—	1.0
EN8-10	8	10	6.0	46.0	21.5	2.0
EN10	10	—	7.5	49.0	—	2.0
EN10-12	10	12	7.5	50.5	24.5	3.0
EN12	12	—	9.0	52.0	—	3.0

⚠ Caution: Material: POM (not flame-retardant resin)

Tubing

Clean tubing

Processed tubing

PushOne fitting

QuickSeal fitting

Clean fitting/Chemifit

Bamboo-shoot fitting

Control switch/Detachable series

Jig/Tool/Accessory

Technical information

Reference